

SCHOOLCRAFT CONNECTION

Vol. 32 | Issue 1 | August 27, 2018

Opinions 3 | Sports 7 | Campus Map 12 | News 15 | Feature 20 | A&E 22 | schoolcraftconnection.com | #StayConnected

AROUND TOWN



Steve Ickes/Courtesy photo

Members of Bricklin International line their vehicles outside Meadow Brook Hall, August 10. Bricklin owners from across the globe gathered in Michigan for the 2018 Bricklin International Meet East.

Bricklin automobile returns home for International Meet

KEVIN T. FERGUSON
Layout Editor

"In 1971 Malcolm Bricklin formed a company called General Vehicles, Inc., and rented a building in Livonia, Michigan to design, engineer, and prototype a car that would carry his name and 47 years later we are pleased to invite

you to come back to Livonia where it all began," read the official invite to the 2018 Bricklin International Meet East.

From Aug. 8 – 12, Livonia played host to members of the Bricklin International Owners Club during an annual meet.

"Meet" Page 8 >



Kevin T. Ferguson/Layout Editor

Among the Bricklins in attendance was the last ever off the production line in 1976. This particular car has less than 100 miles, despite being more than 40 years old.

IN THE NEWS

Pharmacy Tech joins list of available classes

Page 15

ENTERTAINMENT

Brawlout falls short

Page 22

SPORTS

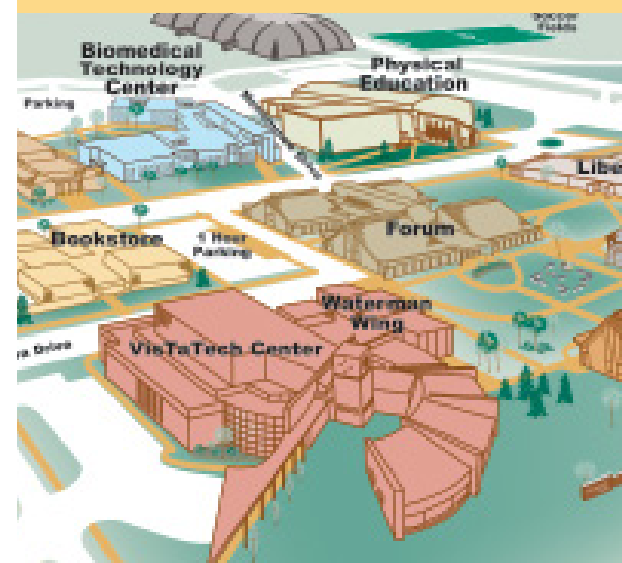
2018 Ocelot schedule

Page 7

SPECIAL INSERT

Grab your campus map insert from the center of this issue

Page 12





EDITORIAL

Rena Laverty
Connection Adviser

Christian Hollis
Editor-in-Chief

Alexis Hollis
Managing Editor

Kevin T. Ferguson
Layout & Design Editor

Marvin Poindexter
A&E Editor

Mai Nakhala
Photo Editor

Alex Zuccarini
Webmaster

Brittany Warren
Advertising Manager

Todd Stowell
Advertising Adviser

STAFF

Tamara Turner
Connor Wellington
Casey DeMase
Jordan Newton



Board of Trustees

Brian D. Broderick
Chair

Carol M. Storm
Vice Chair

Gretchen Alaniz
Secretary

Eric Stempien
Treasure

William P. Erwin Jr.
Trustee

Terry Gilligan
Trustee

Joan A. Gebhardt
Trustee

Terry Gilligan
Trustee

Conway A. Jeffress
President

Welcome Back!

For those of you that are just joining Schoolcraft, welcome to College. We are excited to start this year with you.

For those of you returning, you might have noticed that the Schoolcraft Connection looks a bit different. We have changed the layout design, our logo and even updated our website: (schoolcraftconnection.com).

We have made a commitment to ourselves to keep the contents of each issue relevant and local.

We realize that you aren't coming to us for the latest news in global politics, professional sports coverage or our thoughts with the latest Marvel movies. Though there is space for that kind of content online, we will focus on keeping things relative or close to campus in the print. We want to cover student musicians, events in Metro Detroit, and politics that fall in our local area.

With such an important year ahead of us with the ballot initiative, it is more important than ever to #StayConnected.

Thank you for reading,
Christian Hollis
Editor-in-Chief

OPINIONS

Combating common problems all students face

ALEXIS TUCKER
Managing Editor

College can get overwhelming, and it can be easy to blow off classes, indulge in the party culture and ignore the urge to build healthy habits. This sort of behavior can really make-or-break students in the long-term, and it'll hold them back if they don't invest their time more wisely. Every student faces these problems at one point or another, but they can make college a little less stressful with some habit changes.

TIME INVESTMENT

It can be incredibly easy to keep missing classes once the habit of not going forms, but it is important to continue going. What's

the point of spending all that money when a student misses almost every class? Invest time into studying and going to classes, and doing well will become much easier. Take time every day or off-days (the day after a class) to study for 10 to 20 minutes to sink in the information. A little every day goes a long way, and this prevents having to cram before a test and spend long periods of time forcing the information in, which can make studying a dreadful and painful experience.

WORK SMART, NOT HARD

Once finding the perfect way to study, maintain the habit. What works for one student won't work that well for another, and once study habits form, it can be difficult to break them.

Notice when getting tired or when the information isn't sticking because then you've maxed out on studying for the day. After you reach that point, studying becomes unproductive and can actually do more harm than good, so take a step back and walk away. Make sure to study on a full stomach because if you're hungry, you won't have your full attention on the task.

DISCIPLINE

The hardest character trait to build is discipline. It requires doing many things that people don't like. It is easier said than done, but this is the best medicine to procrastination. It requires habitually studying and doing homework. It is deciding to keep building those good habits. It is deciding a spe-

cific time to do homework and studying.

RESOURCES

Be aware of the resources and opportunities on campus. You won't know you need help until it might be too late. Take the time to get to know at least a few students in every class, so when finals come, you have potential study partners. You can use the study rooms in the Bradner Library with fellow classmates to have study sessions on campus. You can also check out the Learning Assistance Center for help from tutors.

We can never get the time and money we've spent back, so we have to make the most of it. Just breathe, and we'll make it through these years at college.

The Schoolcraft Connection is the award-winning, student-run newspaper published semi-monthly as an educational experience by the students of Schoolcraft College, 18600 Haggerty Road, Livonia, Michigan, 48152-2696. The editorial offices of The Schoolcraft Connection are located in the Student Activities Office on the lower level of the Waterman Campus Center.

The Schoolcraft Connection is a member of the Michigan Community College Press Association, the Colombia Scholastic Press Association, College Media Advisers, the Student Press Law Center, Community College Journalism Association and the Society of Professional Journalists.

Editorial Policy: Unsigned editorials represent the majority opinion of the Editorial Board. Signed columns solely reflect the opinion of the writer. The Schoolcraft Connection abstains from criticism of, or discrimination against any person on the basis of race, creed, color, sex, age, marital status, handicap, national origin, or sexual orientation.

The Schoolcraft Connection is a student forum and is self-monitored. We reject censorship and support a free student press. Material in The Schoolcraft Connection may not be reproduced in any form without prior written consent.

The Schoolcraft Connection corrects all errors of fact. If you have discovered an error, please contact the Editor in Chief, 734-462-4422, or sceditor@schoolcraft.edu.

Plagiarism: The highest crime in writing

CHRISTIAN HOLLIS
Editor-in-Chief

Imagine writing the best essay you have ever written. Imagine providing proper citations, meeting word count, using proper literary terms, and landing a perfect 100 percent on your paper. Now imagine, two years later, someone finds your paper and copies it. The amount of disrespect felt at that moment is unbelievable.

Filip Miucin, former Nintendo Editor for IGN, was accused of plagiarizing a review of Motion Twin's "Dead Cells" by a small

YouTube channel named Boomstick Gaming. After an extended investigation, IGN has let go of Miucin and re-reviewed "Dead Cells."

There is no reason to plagiarize a review other than blatant laziness. A review is simply the writer's impressions of a type of media. Miucin threw away his career to save himself some time. Now, because of Miucin's crime, IGN has to live with unfair backlash from their audience.

Is it worth piling on Miucin, or even destroying his career? Personally, I do not think so. He's lost his dream job and he will

probably never work in games media again, but it is about setting a standard.

IGN producer Brian Altano took to Twitter to give his thoughts about the "Dead Cells" review. "For the record, most video game websites don't really have practices in place to stop plagiarism because hiring people who love to write and talk about video games from their own personal perspective is the whole f***** point."

This needs to be changed.

For IGN, the biggest publication in games media, has a duty to uphold journalistic integrity. New staff

members should be properly vetted. A simple Google search of suspicious phrasing can save a lifetime's worth of reputation.

IGN and Filip Miucin have proved again, if you plagiarize, you will get caught. The consequences for plagiarizing in an academic setting, can lead toward expulsion. The damage doesn't stop there. Many areas of work can result in court cases.

So please, just spend the extra time to use proper citations in all forms of writing, because you do not want to ruin your dreams just to save 15 minutes.

OCELOT OPINIONS



@SchoolcraftConnection:

"What advice would you give new students to succeed in college?"



Elizabeth Setsuda

Major: Undecided

"Have time in your schedule to study or make time."



Vickie Sysole

Major: Nursing

"Save your money so you don't have to work and go to school at the same time."



DeAsia Barnette

Major: Nursing

"Wait to have children until after you're done with school."



Tenae Otis

Major: Communications

"Be careful who you associate with because people are quick to judge you in college."



IT'S YOUR TIME.

IT'S YOUR MONEY.

Manage your accounts whenever and wherever it's convenient for you with Michigan Educational Credit Union's Mobile Banking solutions and Internet Home Banking. Need quick cash? We have ATMs right on campus, and you'll save money with our great savings and loan rates and lower fees.

So why not join MECU today? You're eligible for membership if you live, work or worship in Wayne, Washtenaw, Oakland, Macomb, Livingston or Jackson County. Sign up now at www.michedcu.org.



**Michigan Educational
Credit Union**

Plymouth Main Office
9200 Haggerty Road
Plymouth, MI 48170
(734) 455-9200



WWW.MICHEDCU.ORG

This credit union is federally insured by the
National Credit Union Administration.

Livonia
(734) 261-1050

Ann Arbor
(734) 761-7505

Brighton
(810) 494-6000

Royal Oak
(248) 399-7473

Macomb
(586) 566-5599



ORIN
JEWELERS

NORTHVILLE GARDEN CITY
ORINJEWELERS.COM

**FOREVER
IS JUST
BEGINNING**

FOREVERMARK
A DIAMOND IS FOREVER

DE BEERS GROUP

Career Services aims for education that works

Campus jobs open gateway to success, future employment

ALEXIS TUCKER
Managing Editor

Finding a job can be a daunting task, but with the help of the Schoolcraft's Career Services department, job-seeking and career guidance can become a much smoother and less intimidating process.

Located within the McDowell Center, Career Services provides resources to current students, alumni and members of the community. All services offered are free and available year round.

FINDING YOUR PATH

Last year, Career Services launched an online personality quiz labeled Career Coach. Based on the answers, Career Coach will suggest multiple career opportunities. Results from Career Coach help with educational planning with the tool to see degree programs related to a career. It is a free service that gives two options for a six-question quiz or a 60-question assessment, or there are options to search for programs or careers to see all employment opportunities. Students and community members can access Career Coach at schoolcraft.emsicc.com. If interested in discussing the results, an appointment can be made to talk about the specifics in the assessment and what it means.

WORKING ON CAMPUS

Many departments on campus hire students employees to do



Mai Nakhala/Photo Editor

Roman Lodhi, Biology major, works in the Admissions and Welcome Center. Lodhi's day-to-day tasks consist of assisting students and inviting new students to orientation and campus tours.

assist in a variety of jobs. Jobs in media services, student services, grounds, tutors, computer lab aids and many more are available for students to apply for. The campus employs around 450 student employees working on campus. Although, they don't just help with on-campus jobs. Career Services have has an online job board via College Central, which hosts a wide variety of employment options to appeal to students and the community at large. The online job board is maintained by Career Services, and employers have to call first before they can post a job to ensure steady flow on the board.

"What benefits students working for the school is understanding the environment you're going into and how to

prioritize many different tasks and events," said Jarvis Byrd Jr., Graphic Design major. "...it is very satisfying when you complete those requests."

**2.94
& above
GPA**

WORKSHOPS

Career Services also hosts a multitude of events every semester to equip job seekers with the skills they need to land that perfect dream job or the first steppingstone of a long and prosperous career. There are interview workshops to develop better interviewing skills and resume workshops to build the best resume employers look for, but first, students have to find out where they would like to work.

JOB FAIRS

During the spring and fall semesters, Career Services holds a job fair with a wide range of employers to appeal to all types of people. The annual fall job fair will be held on October 23 from 1 p.m. to 3 p.m. in the VisTaTech Center on main campus. More than 70 employers from a variety of industries will be speaking with and accepting resumes from job seekers. This event is free and open to the public.

"What I love about working in this office is the open-door policy," said JoAnne Stadnicar, the Career Services Coordinator. "It makes you feel good about working here."

Career Services is open Monday through Friday from 8 a.m. to 5 p.m. For more information, call 734-462-4421. To send in resumes, email careerservices@schoolcraft.edu

Two-year college students who worked more than 20 hours a week had the highest GPA, at 2.94, compared with students who worked under 20 hours a week, at 2.93, and students who didn't work at all, at 2.82, according to a study in the Journal of Population Economics.

SCHOOLCRAFT COLLEGE FITNESS CENTER



Like us on
Facebook



Follow us on
Twitter @scgetfit

GET FIT FOR FREE!

Free for Credit Students and actively teaching Faculty
Discounts available for Staff and Spouses

Hours:
Monday-Friday
5:30 a.m.-9 p.m.
Saturday-7 a.m.-5 p.m.
Sunday-10 a.m.-4 p.m.

Conveniently
located in the
Physical Education
building

AMENITIES:

- Lockers available
- Free towel service
- Full locker room and sauna
- Squat racks, deadlift platforms, free weights, and cardio machines available.
- Monthly Incentive Programs, Challenges and more!



For more
information

Call: 734-462-4348

Visit: www.schoolcraft.edu/fitnesscenter

E-mail: scfitnesscenter@schoolcraft.edu



Schoolcraft College
FITNESS CENTER

SPORTS

SCHOOLCRAFT HOME SCHEDULES 2018



WOMEN'S SOCCER

Date	Opponent	Time
Aug. 29	Jackson	3 p.m.
Sept. 8	Cincinnati State	1 p.m.
Oct. 10	Delta	3 p.m.
Oct. 14	Lake Michigan	Noon
Oct. 17	Ancilla	Noon
Oct. 27	Region XII Semi-final	5 p.m.
Oct. 28	Region XII Championship	Noon

MEN'S SOCCER

Date	Opponent	Time
Sept. 8	Cincinnati State	3 p.m.
Sept. 12	Muskegon	3 p.m.
Sept. 16	Lake Michigan	Noon
Sept. 26	Jackson	3 p.m.
Oct. 17	Ancilla	3 p.m.
Oct. 27	Region XII Semi-Finals	2:30, 7:30 p.m.
Oct. 28	Region XII Championship	3 p.m.

WOMEN'S VOLLEYBALL

Date	Opponent	Time
Sept. 18	Grace Christian	7 p.m.
Sept. 20	Oakland	7 p.m.
Sept. 27	St. Clair	7 p.m.
Oct. 11	Macomb	7 p.m.
Oct. 18	Mott	7 p.m.
Oct. 23	Henry Ford	7 p.m.

MEN'S GOLF

Oct. 8 at 10 a.m.
Schoolcraft College Invitational
Walnut Creek CC, South Lyon, Mich.

BOWLING

Date	Event	Time
Jan. 25	Schoolcraft (Merri-Bowl Lanes)	11 a.m.
Feb. 15	MCCAA/Region 12 Tournament (Merri-Bowl Lanes)	10 a.m.

WOMEN'S BASKETBALL

Date	Opponent	Time
Oct. 24	Concordia JV (Scrimmage)	5 p.m.
Nov. 14	Owens	5:30 p.m.
Dec. 5	Jackson	5:30 p.m.
Dec. 15	Lansing	1 p.m.
Jan. 3	Mott CC	5:30 p.m.
Jan. 9	Delta College	5:30 p.m.
Jan. 19	Henry Ford College	1 p.m.
Jan. 26	Alpena CC	1 p.m.
Feb. 6	Macomb CC	5:30 p.m.
Feb. 16	Wayne County CCD	1 p.m.
Feb. 23	St. Clair County CC	1 p.m.
Feb. 27	Oakland	5:30 p.m.

MEN'S BASKETBALL

Date	Opponent	Time
Nov. 14	Owens	7:30 p.m.
Dec. 5	Jackson	7:30 p.m.
Dec. 15	Lansing	3 p.m.
Jan. 3	Mott CC	7:30 p.m.
Jan. 9	Delta College	7:30 p.m.
Jan. 19	Henry Ford College	3 p.m.
Jan. 26	Alpena CC	3 p.m.
Feb. 6	Macomb CC	7 p.m.
Feb. 16	Wayne County CCD	3 p.m.
Feb. 23	St. Clair County CC	3 p.m.
Feb. 27	Oakland CC	7:30 p.m.

For the full season schedules of Schoolcraft sports teams, visit schoolcraft.edu/athletics



◀ Jeff Farrell, Bricklin International member, stands with a SV1 model Bricklin outside Embassy Suites in Livonia, Aug 11. Farrell, an eight-year owner of the signature gull-wing sports car drove his Bricklin from Plano, TX to attend his second Bricklin International meet.

MEET

Continued from Page 1

Event co-coordinator and Bricklin owner, Steve Ickes, spent a year planning the meet with wife Kathryn. Bricklin owners and fans from across the globe gathered for a four-day event that had members visiting iconic Michigan sites like Henry Ford Museum to Meadow Brook Hall, with Downtown Northville receiving the highest praise from those in attendance.

Those who traveled from afar did not just do so by taking to the sky, one Bricklin enthusiast drove from Plano, Tx to attend his second ever meet.

Jeff Farrell, a Bricklin owner of eight years and Texas native, was first introduced to the signature car when his college

friend purchased one in 1975. Farrell helped his friend with the upkeep of the vehicle and became familiar with the SV1. So years later when he saw one in an auction, it was no brainer to put in a bid.

This year's meet was Farrell's second, his previous stop being Wisconsin. "Steve and Kathryn did an excellent job hosting this year's meet," Farrell said about his visit to Livonia.

The Bricklin SV1 model was original designed here in Livonia. SV1, which is short for Safety Vehicle 1, boasted a roll cage with no cigarette lighter or ashtray. With 2,854 cars manufactured and only near 1,500 still in existence, the club membership is exclusive, to say the least.

Though the club is small, they still have representatives from locations that support the In-



FREE STUDENT ACCOUNTS
Your Money Moves with You.

Access to your money now & into the future

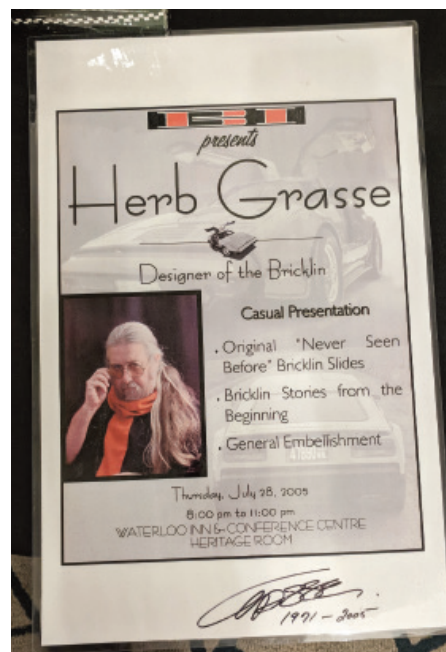
- No minimum balance requirements
- No monthly account fees
- Free Mobile Banking, eBanking & eStatements

Open your account today!



CFCU.ORG | 877.937.2328

Federally insured by NCUA. ©2018 Community Financial



Photos by Kevin T. Ferguson/Layout Editor

The 2018 Bricklin International Meet East ended with a banquet and auction hosted by Embassy Suites in Livonia, Aug. 11. After dinner, members were able to bid on donated auction items like an autographed poster by Herb Grasse, the designer of the Bricklin.

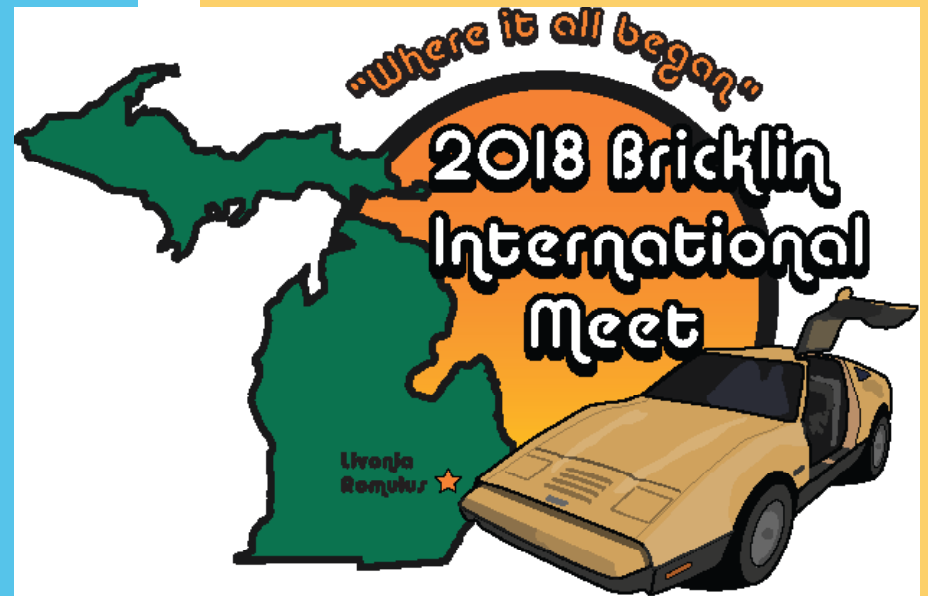
ternational claim in their name. Members who flew in without their Bricklins came from Nova Scotia, Arizona, Texas and Minnesota.

One highlight from the near 100 members in attendance was a personalized police escort from their Embassy Suites hotel in Livonia to the car show in Downtown Northville. The group closed out the meet with a banquet and auction Aug. 11. Members enjoyed dinner and drinks, followed by an award ceremony. Following the awards, they had an opportunity to bid on pieces of Bricklin memorabilia, to include an autographed poster by Herb Grasse, the designer of the Bricklin.

Ickes was happy the event was a success, but had this to say about the event he worked so hard on upon its completion, "As successful as the meet was, I'll be honest with you....I'm glad its over."

BY THE NUMBERS

- 98 members attended
- 30 cars in Downtown Northville
- 8 members flew in from around the world, which include:
 - Anchorage, AK
 - Nova Scotia
 - Arizona
 - Texas
 - Minnesota
- Bricklin International was formed in 1976
- The car was built from '74 to '75, with model years 1974, 1975 and 1976
- 2,854 total SV1s were made and around 1,500 still exist



IN MY OWN WORDS

I had the pleasure of designing the logo for the 2018 Bricklin International Meet East and would like to extend thank yous to Steve and Kathryn Ickes, as well as the Schoolcraft College Foundation.

Bricklin International reached out to Schoolcraft to establish a design contest among the student base, and the Foundation chipped in scholarship awards to the top three designs.

I was lucky enough to be selected a winner. Attending the banquet as Steve's guest, receiving an award for first place design and meeting a great group of people was a nice addition to some help with tuition via that scholarship.

Thank you,
Kevin



Though the original Bricklin boasted only five bright colors, over the years owners have taken it upon themselves to customize their SV1.

VOLUNTEERS NEEDED

NO EXPERIENCE NECESSARY!



The 2018 Southeast Michigan Science & Engineering Festival is looking for volunteers to run engaging hands-on STEM demonstrations and experiments for middle school students and their families.

- Sign up for one or both days, times to fit your schedule
- Lunch provided both days
- Free t-shirt!
- Sign up at tinyurl.com/y9doofyl or scan with your smartphone.

SIGN UP HERE



BROUGHT TO YOU BY



**Schoolcraft
College**



**Michigan
Technological
University**

Back to school savings

CONNOR WELLINGTON
Staff Writer

With summer drawing to a close and classes starting once again, many students throughout Schoolcraft are inevitably finding themselves on tighter and tighter budgets for getting their back-to-school supplies.

TEXTBOOKS

Textbooks have a reputation for being outlandishly overpriced. There are a wide variety of websites that can have much cheaper options for buying books used or renting them including Amazon, Chegg and even Barnes & Noble. Other sites are dedicated to comparing prices between different providers to show the best options available. These are very simple tools to use, and with them books can be found to rent from for less than half the price of buying them used at the bookstore.

OFFICE SUPPLIES

Supplies are usually fairly priced, but there are still ways to save a few bucks. Office supply and value retail stores offer many back-to-school sales. These sales generally operate by featuring a collection of items on massive sales for one to two weeks before replacing them with a new group. With a bit of patience, basic school supplies can be stocked up for up to 90 percent off their base prices. For the remaining items that likely won't receive earth-shattering sales such as binders, buying them online rather than in-store is recommended. Retailer websites are designed to offer you coupons while visiting them to secure sales, resulting in even more savings.

SOFTWARE

Software is by far the easiest method to save. A vast number of professional software creators offer their titles for free or extremely reduced prices with the use of a .edu email address. Mi-

crosoft offers their full range of Office 365 programs for students for free. Adobe offers their full Creative Cloud for \$19.99 a month, over a 60 percent discount from their base cost. Students can also receive six months of Amazon Prime for free.

TECHNOLOGY

When considering buying new tech, it's important to remember most students will attend classes for four years. There are many ways to achieve that longevity without breaking the bank. For graphing calculators buy an older, used model. The TI-83 Plus in particular is very affordable compared to its newer counterparts, and they are easy to obtain on websites like eBay and Craigslist for less than \$45. For Math and Science majors, it's recommended to get the slightly newer but more expensive TI-84 Plus. The TI-84 Plus is a much more efficient and versatile solution, and at an average of \$70 used.

While buying used may be an effective solution for calculators, the same cannot be said for laptops although there are still savings to be had while buying new. A common mistake people make is going to their nearest retail store and buying the first laptop the associate recommends. Retail stores generally offer a very small and biased selection of models and brands, and often don't represent the best options for every budget. With this in mind, in most cases the best approach is to just have patience and shop around. By comparing different models and their prices across different stores and platforms, similar-performing laptops can be found at much cheaper prices than can be found at a single location.

One final tip, don't spend \$1300-\$2800 on a MacBook Pro when you don't actually need it.

BIOMEDICAL TECHNOLOGY CENTER

Many math, Open Entry Open Exit nursing, Molecular Biology and the Simulation Lab classes are here. There are several study rooms that can be "checked out" for a few hours for group studies.

ST. JOE'S SPORTS DOME

The Sports Dome is used as a practice field for athletics. It is also the home of the Ocelot Cafe, which serves the best smoothies on campus.

APPLIED SCIENCES

Students who take occupational classes such as Nursing, programming, drafting, and welding will have their classes here.

BOOKSTORE

The Bookstore is the one-stop-shop for everything students need for classes. From scantrons to laptops, the Bookstore has it all.

JEFFRESS CENTER

Named after current Schoolcraft President Conway Jeffress, the Jeffress Center is the newest building on campus. Inside students will find the JC Cafe, St. Joe's Urgent Care and Campus Police. CGT and CEPD students will use this building heavily during their Schoolcraft tenure.

VISTATECH CENTER

With several dining options which include, American Harvest, Main Street Café and Henry's Food Court Vis Ta Tech Center is a go to for great food. It also hosts classrooms, meeting rooms, an auditorium and is home to the world renown Culinary Arts Department. There are two four-year satellite campuses on the top floor, Davenport and Northwood University.

WATERMAN WING

The Student Activities Office holds events for students on campus and provides rest and relaxation in between classes. The Connection is located here. So stop by and challenge us to a game of hoops or foos ball.

7 Mile Road

Parking

Jeffress Center

Parking

St. Joe's Urgent Care

St. Joe's Sports Dome

Biomedical Technology Center

Applied Sciences

Parking

Bookstore

1 Hour Parking

VisTaTech Center

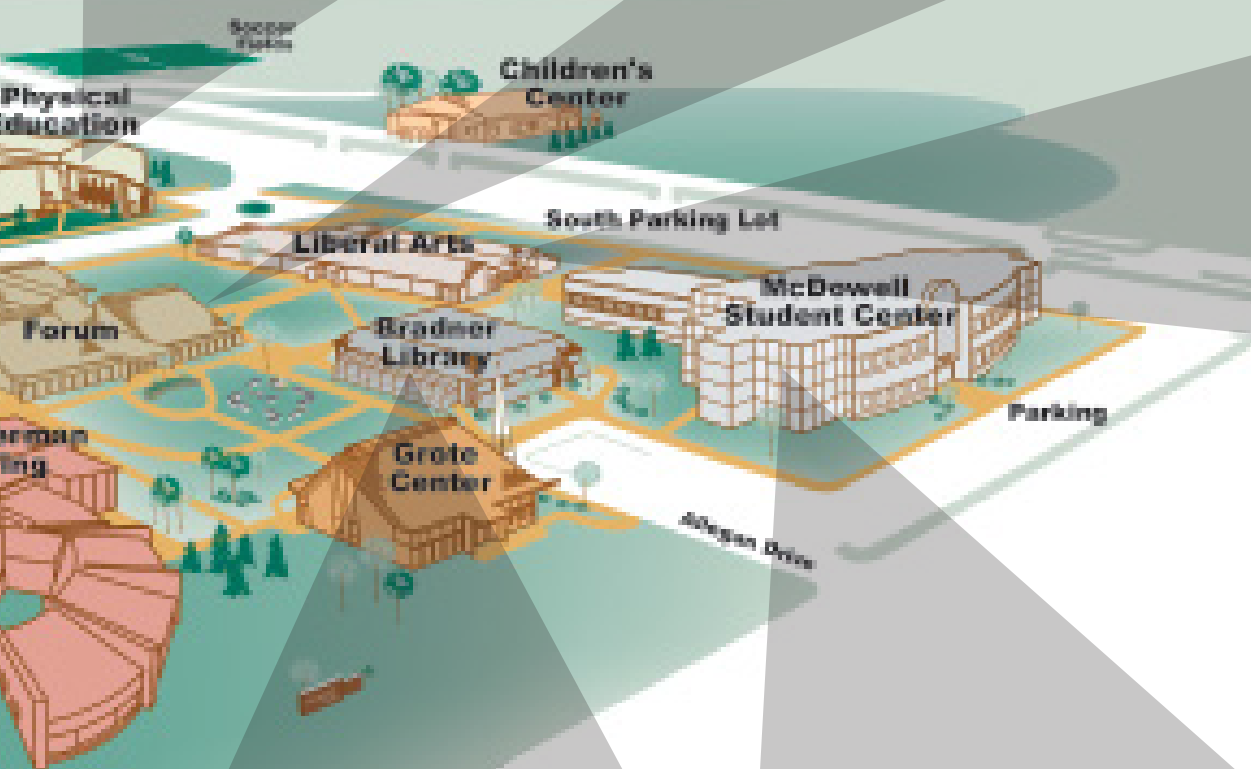
Waterman Wing

PHYSICAL EDUCATION BUILDING

Gym classes and yoga classes are held here. Students can take advantage of the free Fitness Center to get in shape with a mini cafe nearby to catch a snack or small meal.

FORUM

Many of the science classes are held in this building. Music can be heard playing throughout the day, and an auditorium is in the center of the building.



LIBERAL ARTS

English, History, Theatre, and various other liberal arts classes are held here. The James R. Hartman Theatre is located in the center of the building and is where the Schoolcraft Theatre Department holds its semi-annual theatrical productions.

BRADNER LIBRARY

Students come here to study and research projects they're working on for classes. Students wanting to study in groups can check out one of the several rooms available, equipped with computers and white boards.

MCDOWELL STUDENT CENTER

This is the hub for all student services. Career Services, Financial Aid, Registration, Academic Advising, Counseling, Cashiers Office, Veterans Resource Center and Testing Center are located here.

CAMPUS MAP



18600 Haggerty Road
Livonia, MI 48152
P: 734-462-4400

Campus Police
P: 248-462-4424

www.schoolcraft.edu

You focus on school



Let us pick up the tab

costs



**Schoolcraft
College**

Tuition and fees for 60 credit hours

\$8,495

Guard benefits for 60 credit hours

*State tuition assistance: **\$36,000**

Federal tuition assistance: **\$15,000**

Montgomery GI Bill: **\$ 7,500**

GI Bill Kicker: **\$ 7,000**

* Available only to Michigan National Guard students

**Call/text Jason Bejger:
734-249-0568**

**ICHIGAN
NATIONAL GUARD**
miarmyguard.com

Pharmacy Tech joins list of offered programs

ALEXIS TUCKER
Managing Editor

Schoolcraft is now offering a new Pharmacy Tech Program at the Radcliff Center starting this fall. This program is the culmination of two years of work and several site visits to model the facility after real local pharmacies. The actual construction started earlier this year in March. With the program being 31 credits, it will take about nine months for students to complete the curriculum.

The focus of the program is on the practical aspect of learning like an apprenticeship program. "Any student will be ready," said curriculum coordinator and Instructor Joe Ringer, R.Ph. MBA.

Students will be walked through the entire tech experi-

ence in their first semester from filling and processing prescriptions to even answering phone calls. At first it appears to be a normal classroom like any other, but when looking in the back, there is a mock-pharmacy meant to mimic a traditional pharmacy layout. This way, students will quickly become acclimated to their future workspace.

The mini-pharmacy is fully equipped with patient files and health records, prescriptions to fill, a mixer, even interrupting phone calls, and another half dedicated to another side of the technician job. On the other side, technicians have to make intravenous mixtures, which mimics the scenario of being in a hospital creating chemother-

"Tech" Page 21 >

CLINICAL STUDY VOLUNTEERS NEEDED

You may be eligible to participate in a Clinical Study if you are

- Male or female between the ages of 18 and 50
- In good general health
- Available to participate and for follow up for 44 weeks

This research study will evaluate the safety and immune response of an experimental vaccine in healthy people

You could be compensated up to \$1,600 for your participation

To see if you qualify contact us at
734-527-4200

SRI Biosciences™
A DIVISION OF SRI INTERNATIONAL



SEPTEMBER 19-20, 2018
10 A.M. - 2 P.M.

FESTIVITIES CAN BE FOUND UNDER BIG TOP

- FIND CLUBS TO JOIN • LEARN ABOUT STUDENT SERVICES**
• DISCOVER LOCAL BUSINESSES • PARTICIPATE IN GAMES AND ACTIVITIES
• FOOD (\$1.50 HOT DOGS, FREE POPCORN)
WIN PRIZES ON THE MAIN STAGE WITH THE DJ



FOR MORE INFORMATION, CONTACT THE STUDENT ACTIVITIES OFFICE AT 734-462-4422



CAMPUS & CLUB EVENTS

ANIME NIGHTS

Sept. 3 through 5, 10 through 12
4 to 6 p.m.

Room 100 of the Bradner Library

Group up and meet fellow anime fans. Participants will choose what anime is watched from the anime streaming service Crunchyroll. Guests have the chance to enter to win a 48-hour free Guest Pass to Crunchyroll. Call 734-462-4440

ALUMNI TAILGATE EVENT

Sept. 8
12 to 4 p.m.
South Parking Lot next to the Sports Dome
Pre-sale tickets available at \$15 before Sept. 5, \$20 regular admission, children get in for \$10.



The tailgate kicks off the Schoolcraft vs Cincinnati State soccer games. At noon, hospitality tents open. At 1 p.m., the women's soccer game begins. The men's game starts at 3 p.m. Seating is limited, so personal chairs are recommended.

Call 734-462-4455 for more information.

DIGITAL SCULPTING WITH AUTODESK ALIAS: INFORMATION SESSION

Sept. 11
6 p.m. to 7 p.m.

Room 112 of Jeffress Center



Everything that is made has to be designed and modelled first. Autodesk Alias is the standard design software in the industry.

Instructor Don Lloyd will go over the curriculum, job outlook, and more in this informational session.

Call 734-462-4448 for more information.

RESUME ESSENTIALS WORKSHOP PRESENTATION

Sept. 12
10 to 11:30 a.m.
Room MC100 of McDowell Center



ALL EVENTS ARE FREE AND OPEN TO THE PUBLIC UNLESS OTHERWISE NOTED.

Building a resume takes time and skill, and this part of the job seeking process can decide the offers one can get. With a professional resume writer to lead the workshop, anyone can learn how to create the optimal resume for employers.

Call 734-462-4421 for more information.

MAKE-IT TAKE-IT ICE CREAM SUNDAES

Sept. 12
11 a.m. to noon
Student Activities Center in the Lower Waterman, VisTaTech Center

Everyone is welcome to build their own free ice cream sundae. There will be plenty of ice cream and toppings to choose from to create the perfect sundae.

Call 734-462-4422 for more information.



DEMENTIA CARE CERTIFICATE PROGRAM: INFORMATION SESSION

Sept. 15
10 to 11 a.m.
Room BTC 200 of the Biomedical Technology Center

Prospective students of the program have a chance to meet the instructors of the program and ask questions regarding the field of work.

Call 734-462-4448 for more information.



CULINARY EXTRAVAGANZA

Sept. 16
2 to 4 p.m.
VisTaTech Center
\$60/ticket

Have a taste of Southeast Michigan at the Culinary Extravaganza. Several partnered restaurants and even Schoolcraft's Culinary Program will have samples for attendees. Attendees can also browse through the

Silent Auction for a variety of items.
Call 734-462-4581 for more information.

PROJECT MANAGEMENT: INFORMATION SESSION

Sept. 17
6 to 7:30 p.m.
Room BTC 370 of the Biomedical Tech Center

Prospective students can learn the program requirements, the jobs certification can lead to. Students can meet the instructor and ask questions later in the session.

Call 734-462-4448 for more information.



SCHOOL DAZE FALL FESTIVAL

Sept. 19 and 20
10 a.m. to 2 p.m.
Between the Forum and Liberal Arts

Join the Student Activities Office for its annual fall festival where students can learn about clubs, organizations, meet new people, participate in contests for prizes, and learn more about Schoolcraft's student services.

Call 734-462-4422 for more information.





AMERICAN HARVEST BREWPUB

The American Harvest Brewpub offers award winning, student made beer to the public.

10 different taps • Sample Flights • Pints Cans • Bottles • Howlers • Growlers

CHECK US OUT ON-LINE!
www.schoolcraft.edu/brewpub/american-harvest-brewpub
www.facebook.com/AmericanHarvestBrewpub

AmericanHarvestBrew@schoolcraft.edu

COLLEGE VISITS

DATES AND TIMES ARE SUBJECT TO CHANGE.

Students interested in transferring can meet with representatives or advisors from the following universities to answer any general questions and schedule advising appointments.



Ferris State University
Aug. 28 at 10 a.m. to 1 p.m.
Henry's Food Court in VisTaTech
Center
734-462-4426



Advising with
Wayne State University
Aug. 30 at 9 a.m. to 3 p.m.
Rm. 175 of McDowell Center
734-462-4429



Advising with
University of Michigan - Flint
(APPOINTMENT ONLY)
Sept. 5 at 9 a.m. to 3 p.m.
Rm. 175 of McDowell Center
734-462-4429



Advising with
Eastern Michigan University
Sept. 6 at 9 a.m. to 4 p.m.
Rm. 175 of McDowell Center
734-462-4429



Advising with
Wayne State University
Sept. 6 at 9 a.m. to 3 p.m.
Rm. 175 of McDowell Center
734-462-4429



Concordia University - Ann Arbor
Sept. 13 at 11 a.m. to 2 p.m.
Biomedical Tech Center
734-462-4426



Advising with
Eastern Michigan University
Sept. 17 at 9 a.m. to 4 p.m.
Rm. 175 of McDowell Center
734-462-4429



Advising with Walsh College
Sept. 18 at 11 a.m. to 5 p.m.
Rm. 175 of McDowell Center
734-462-4429



Advising with
Wayne State University
Sept. 20 at 9 a.m. to 3 p.m.
Rm. 175 of McDowell Center
734-462-4429



University of Michigan - Flint
Sept. 20 at 11 a.m. to 2 p.m.
Biomedical Tech Center
734-462-4426



Eastern Michigan University
Visit
Sept. 21 at 10 a.m. to 2 p.m.
Liberal Arts
734-462-4426



Western Michigan University
Visit
Sept. 25 at 9 a.m. to 12 p.m.
Liberal Arts
734-462-4426



Indiana Wesleyan University
Visit
Sept. 26 at 10 a.m. to 2 p.m.
Henry's Food Court
in VisTaTech Center
734-462-4426

The graphic features a blue background with a pattern of small white dots. On the left, there are several yellow stars of varying sizes. In the center, a white fist is raised, with the word 'VOTER' written in large, bold, white letters across it. The word 'BE A' is written in smaller, white letters above 'VOTER'. To the right, the text 'nextgen michigan' is written in white, with a red arrow pointing to the right. Below this, the date 'November 6, 2018' is written in white on a blue banner. At the bottom, the website 'nextgenamerica.org/pledge' is written in white. In the bottom right corner, there is a small box containing the text: 'Paid for by NextGen Climate Action Committee; nextgenamerica.org; not authorized by any candidate or candidates' committee.'



STAR WARS AND THE POWER OF COSTUME

Detroit Institute of Arts 5200 Woodward Ave. Midtown Detroit 313-833-7900 Tuesdays-Sundays Now through Sept. 30
Price \$7 to \$24

Star Wars and the Power of Costume explores the creative process through intricate sketches and full documentation on how Darth Vader's menacing armor came to be and the fashion evolution of Princess Leia. Visitors also have an opportunity to view videos featuring designers, actors, and concept artists to better shed some light and dark on how a team of creatives turned a concept into fantasy and eventually into reality. Tickets are available at www.dia.org/StarWars or by calling 313-833-4005.

DINOSAURIA

Detroit Zoo 8450 W. 10 mile Road Greater Royal Oak Area 248-541-5717 Mondays-Sundays continues through Sept. 30
\$6 in addition to Zoo admission

The Dinosauria at the Detroit Zoo is returning as the largest dinosaur adventure of its kind in the country with some 40 life-like animatronic dinosaurs featured along a 3-acre Dino Trail.

SURVIVE THE NIGHT HAUNTED CAMPING

Scarefest Scream Park 34111 28 mile Road Lenox Township, Michigan 48048

Saturday Sept. 8 & Saturday Sept. 15
\$79 per individual

Survive the Night is a horror-themed camping experience for adults 18 and over.

With over 13 hours of terror planned, attendees can look forward to an assortment of entertainment ranging from sleeping in the great outdoors to being chased by chainsaw-wielding maniacs through the forest.

**FOURTH ANNUAL STUDENT
CAPSTONE
PHOTOGRAPHY EXHIBITION**
Wayne County Community College District- Downriver Campus 21000 Northline Road (Ray Mix Room E-126)
Taylor, Michigan 48180
Thursday, Aug. 30, at 7 p.m.

This exhibition features the work of 13 students who are in the professional Digital Photography Technology program at WCCCD. This is an excellent opportunity to learn about and perhaps purchase photography from talented emerging artists. The images on exhibit are as varied as the interests of the students themselves. The work covers the range from landscapes to portraiture, and color to noir prints.

SATURDAY BIKING AT HINES
Begins Saturday, Sept. 1, 9 a.m.
Free

Hines Drive will be closed to traffic from Outer Drive to Ann Arbor Trail every Saturday for the public of all ages to run, walk, skate or

cycle safely. This gives patrons the opportunity to get active without the hassle of traffic.

**PLAY BALL:
BASEBALL AT THE DIA**
Detroit Institute of Arts
5200 Woodward Ave. Detroit, Michigan 48202
313-833-7900
Now through Sept. 16 Tuesdays-Sundays at 10 a.m.
Admission is Free

This exhibition commemorates the 50th anniversary of the Detroit Tigers' 1968 World Series victory with memorabilia, baseball cards and collectibles.

Visitors will also experience the extraordinary opportunity to view more than 500 baseball cards known as the "T206 White Border Set." Miller's collection of these vintage cards is noted for its rarity and superlative condition and

includes a Joe Doyle "error card" as well as the coveted and rare Honus Wagner card.

**COMMON GROUND'S
BIRMINGHAM ART STREET
FAIR**
Shain Park Birmingham, Michigan 48009
Sunday Sept. 16 Starting at 10 a.m.
Admission is Free

Common Ground's Birmingham Street Art Fair celebrates its 44th anniversary this year with more than 80,000 fairgoers attend annually. The fair will move to the streets surrounding Shain Park, downtown Birmingham's beautiful City Park. More than 140 juried-selected artists will be featured in this elegant setting. There is also a silent auction tent filled with beautiful artwork to bid on, which directly benefits Common Ground.



**WHERE WILL YOUR
TRUE NORTH
LEAD YOU?**

Balancing family, career and education is challenging, but our flexible and convenient programs make earning your bachelor's degree attainable.

- Combine evening, weekend and online courses to fit your schedule
- More than 15 specialty business majors
- Competitive tuition rates
- Get college credit for your work/life experience with our Prior Learning Assessment
- Financial aid available for those who qualify
- Community college partnerships make transferring easy

LEARN MORE about earning your bachelor's degree with classes online or on ground at Schoolcraft's VisTaTech Center. Contact **Stephen Mueller** on campus in VisTaTech Center VT-406, at **734.462.7912** or **muellst@northwood.edu**.





**NORTHWOOD
UNIVERSITY**

northwood.edu • 800.622.9000

Northwood University is committed to a policy of nondiscrimination and equal opportunity for all persons regardless of race, gender, color, religion, creed, national origin or ancestry, age, marital status, disability or veteran status. The University also is committed to compliance with all applicable laws regarding nondiscrimination. Northwood University is accredited by the Higher Learning Commission (hlc.commission.org), a regional accreditation agency recognized by the U.S. Department of Education. 2018-768 8.18

Travel back to the 16th Century this Fall



2018 Michigan
**Renaissance
Festival**

MichRenFest reaches 39 years of tomfoolery

ALEXIS TUCKER
Managing Editor

The 39th annual Michigan Renaissance Festival has dazzled patrons in its 17-acre village with its weekend events since 1979. Located in Holly, Mich., this year features a 7 weekend event, which began with its traditional Royal Pet and Ale festival, with themes being Highland Fling, High Seas Adventure, Wonders of the World, Shamrocks and Shenanigans, Harvest Huzzah, Festival Friday and closing with Sweet Endings.

Each weekend has special events attached to it such as contests and competitions. Other events that cost extra include the Pig'N'Swig where you try samples of bacon with bourbon or whiskey, walk with a Hawk for fifteen minutes with the Hawk Walk, the 6 course meal Feast of Fantasy, and a Masque Ball.

Throughout the Festival, there are several hundred vendors that can be visited to see their craft from blacksmiths to seamstresses to candlemakers. Some of these vendors can actually be seen creating items while attendees peruse their collection of items for sale. During any of the weekends,



Alexis Tucker/Managing Editor

Actors practice a common dance routine found at the Michigan Renaissance Festival during a media preview party. Attendees of the Festival may take part in certain dances.

patrons can watch the brave knights joust and ride people-powered rides.

The Renaissance festival annually restores the magic with its beautiful scenery and carefully-crafted ambiance, and there is a reason to visit each weekend with its unique attractions and themes. It is a must see in the Southeast Michigan area.

TECH

Continued from Page 15

apy treatments and IV medications. Students there must follow specific protocols to work in an almost-sterile environment where they have to put on foot-covers, bonnets, scrub their hands, and put on their garbs to create the mixtures. This section has a laminar fume hood (horizontal blowing), vertical fume hood, and a chemotherapy fume hood, which students will learn how to properly use all three. Already certified technicians will assist in teaching students and will be on standby during classes to help students with a 5-to-1 student/

tech ratio. Students will always have and get the help they need to succeed in this program.

In their second semester, students begin to work in the community in places like local hospitals or local pharmacies. By this time, students will be well-versed in their job, so everything should be fairly familiar in procedure.

Schoolcraft created this program to fill a need in the community, and with some generous donations from Diplomat Pharmacy and Walgreens, these students should be well-equipped to fill this need.

For more information on the Pharmacy Tech program, contact 734-462-4426.

2018 Michigan Renaissance Festival Themed Weekends

HIGH SEAS ADVENTURE

Sept. 29th & 30th

WONDERS OF THE WORLD

Sept. 8th & 9th

SHAMROCKS & SHENANIGANS

Sept. 15th & 16th

HARVEST HUZZAH

Sept. 22nd & 23rd

FESTIVAL FRIDAY

Sept. 28th

SWEET ENDINGS

Sept. 29th & 30th

For more information, visit www.michrenfest.com

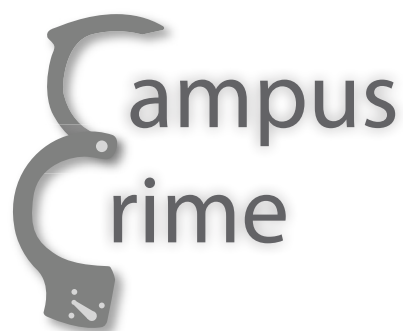
WE'RE HIRING

SCHOOLCRAFT CONNECTI

Come see us in
Lower Waterman!

734.462.4422

#StayConnected



On the evening of July 31, a camper from Kids on Campus (KOC) and his mother visited the Schoolcraft Police Department (SCPD) office where they reported that someone took his \$200 Nintendo video game from his assigned storage shelf.

According to the KOC camper, he placed his video game on his assigned shelf shortly after lunch. When he returned to retrieve it at approximately 1 p.m., he noticed the absence of the game. He immediately reported this to his instructor, who checked both the classroom and other KOC campers' backpacks for the missing item. When unable to locate it, the instructor notified their supervisor of the incident. The supervisor came to the classroom and made an announcement to the campers, requesting that whoever took the game to return it, but no one did.

The item remains missing.

IF YOU NOTICE ANY SUSPICIOUS ACTIVITY ON CAMPUS, CONTACT CAMPUS POLICE AT 734-462-4424.

CLASSIFIEDS

First year male Culinary Arts student seeks roommate for 2 bedroom condo at 26305 w 7 mile Rd, Redford Michigan, 20 minute straight shot to Schoolcraft. 45 minute easy bike ride.

\$500 per month includes all utilities and internet. Bike rental possible. Call or Text Karen 313 213 6930

ARTS & ENTERTAINMENT

More like burnout

CHRISTIAN HOLLIS
Editor-in-Chief

Mad Games's "Brawlout" is an uninspired platform fighter that finds success in filling a specific need in the market. It is no secret that "Brawlout" is heavily influenced by Nintendo's iconic series "Super Smash Bros." Identical stages, fighting settings and even character movesets frames "Brawlout" as a copy-cat.

Unlike the "Super Smash Bros." series's ultimate character roster, "Brawlout" is just a list of generic characters that doesn't make anyone care about them, despite the hidden "lore" tab in the menu. Fortunately, there are three characters seen in popular indie games, those being Jose from "Gua-camele" and Yooka Laylee and Hyper Light Drifter from their self-titled games. Though these characters do spark some redemption, they only make up 30% of an already small roster.

The character unlock system is simply uninspired. Instead of unlocking new characters with unique movesets, unlockable characters are just variants of the nine characters from the start. Based off of the loot box system seen in many other games, characters are unlocked by opening Pinatas and are chosen at random. Thankfully, there (currently) isn't a way to buy Pinatas with real world currency, but that doesn't excuse the random element in progression.

Not only are the characters designs generic, but they also copy abilities from the "Super Smash Bros." series. For example, "Brawlout"'s Sephi'ra plays has the same recovery and special attack as Shiek from "Super Smash Bros."

The biggest thing that makes "Brawlout" stand out in the platform fighting genre is that you can't block. Though you're able to dodge, it is mostly used for mobility purposes and Wave Dashing. The lack of blocking may make it seem like the game might feel faster, but it really just becomes an unskilled button masher. Blocking is also

"Brawlout" review

Reviewed on Playstation 4

3/10



severely missed in Free-for-All matches, when four players face off against each other.

It also severely affects the single-player. The arcade mode is the main focus in "Brawlout"'s single-player mode. In "Easy" mode, the player fights against every other Brawler in the game one-on-one., in "Medium", you play against every character one-on-two, and in "Hard" you play against every character one-on-three. This system is just repetitive and doesn't create anything interesting, nor a real challenge, except for the lack of blocking. Though playing arcade is the easiest way to level-up

characters quickly.

By leveling-up characters, you'll unlock skins and stages. "Brawlout" also suffers from poor stage design. The backgrounds are bland and boring, and there aren't stages that give real stage hazards for casual play. The combination of non-evolving stages and lack of items may alienate the casual fanbase from "Super Smash Bros."

With competitive players being alienated because there isn't the ability to block, and casuals being alienated by the lack of favorite features and inspiring characters, it is hard to determine who "Brawlout" is for. It's truly a shame that almost every game in the platform fighting genre ends up being directly compared to "Super Smash Bros.," but when games like "Brawlout" copies it, the comparison needs to be made. This is a blatant rip-off, and unless you're desperate and can't wait until Dec. 7 for "Super Smash Bros. Ultimate", there isn't a good reason for anyone to play "Brawlout".

"Brawlout" is available now on Xbox One, Playstation 4, Nintendo Switch and PC.

**HEAD OVER TO
SCHOOLCRAFTCONNECTION.COM
TO SEE HOW OUR STAFF
REVIEWED THIS SUMMER'S
ENTERTAINMENT!**



M

DEARBORN

OPEN HOUSE

Saturday, October 20 | 12:00 - 2:30 pm

GO BLUE!
GO DEARBORN.

SIGN UP TODAY!
umdearborn.edu/openhouse
313-593-5100

Henry's Food Court

Weekly Specials



Loaded Nachos
Small Fountain Drink
September 10th – 14th
\$6.99



Grilled Italian Sausage with
Peppers & Onions
Potato Chips
Small Fountain Drink
September 24th – 28th
\$5.99



Reuben Sandwich
Potato Chips
Small Fountain Drink
September 4th – 7th
\$6.99



Grilled Cheese Sandwich &
Cup of Soup
Small Fountain Drink
September 17th – 21st
\$5.99

Located in the VisTaTech Center, 734-462-5903



**Schoolcraft
College**



new this year! **Battle Axe Pub** new this year! **Giant Puppet Troupe** new this year! **The Unicorn Crusades**

new this year! **Wine Garden Tasting** new this year! **Bourbon & Whiskey Tastings**

FREE Parking Randy WISE Automotive Team **2018 Michigan Renaissance Festival**

MichRenFest.com
#MichRenFest     

Open Weekends • Aug. 18th thru Sept. 30th
Plus Labor Day & Festival Friday, Sept. 28th
10am - 7pm • Rain or Shine

ADVANCE DISCOUNT TICKETS AVAILABLE AT PARTICIPATING



MENARDS



Goodwill

DISCOUNT COUPONS AVAILABLE AT PARTICIPATING

SUBWAY

SUBWAY® is a Registered Trademark of Subway IP Inc. ©2018 Subway IP Inc.



nothing

BIOMEDICAL TECHNOLOGY CENTER

Many math classes plus Open Entry Open Exit classes are here with Molecular Biology and the Simulation Lab being here as well. There are several study rooms that can be "checked out" for a few hours for group studies.

ST. JOE'S SPORTS DOME

The Sports Dome is used as a practice field for athletics. It is also the home of the Ocelot Cafe, which serves the best smoothies on campus.

APPLIED SCIENCES

Students who take occupational classes such as Nursing, programming, drafting, and welding will have their classes here.

BOOKSTORE

The Bookstore is the one-stop-shop for everything students need for classes. From scantrons to laptops, the Bookstore has it all.

JEFFRESS CENTER

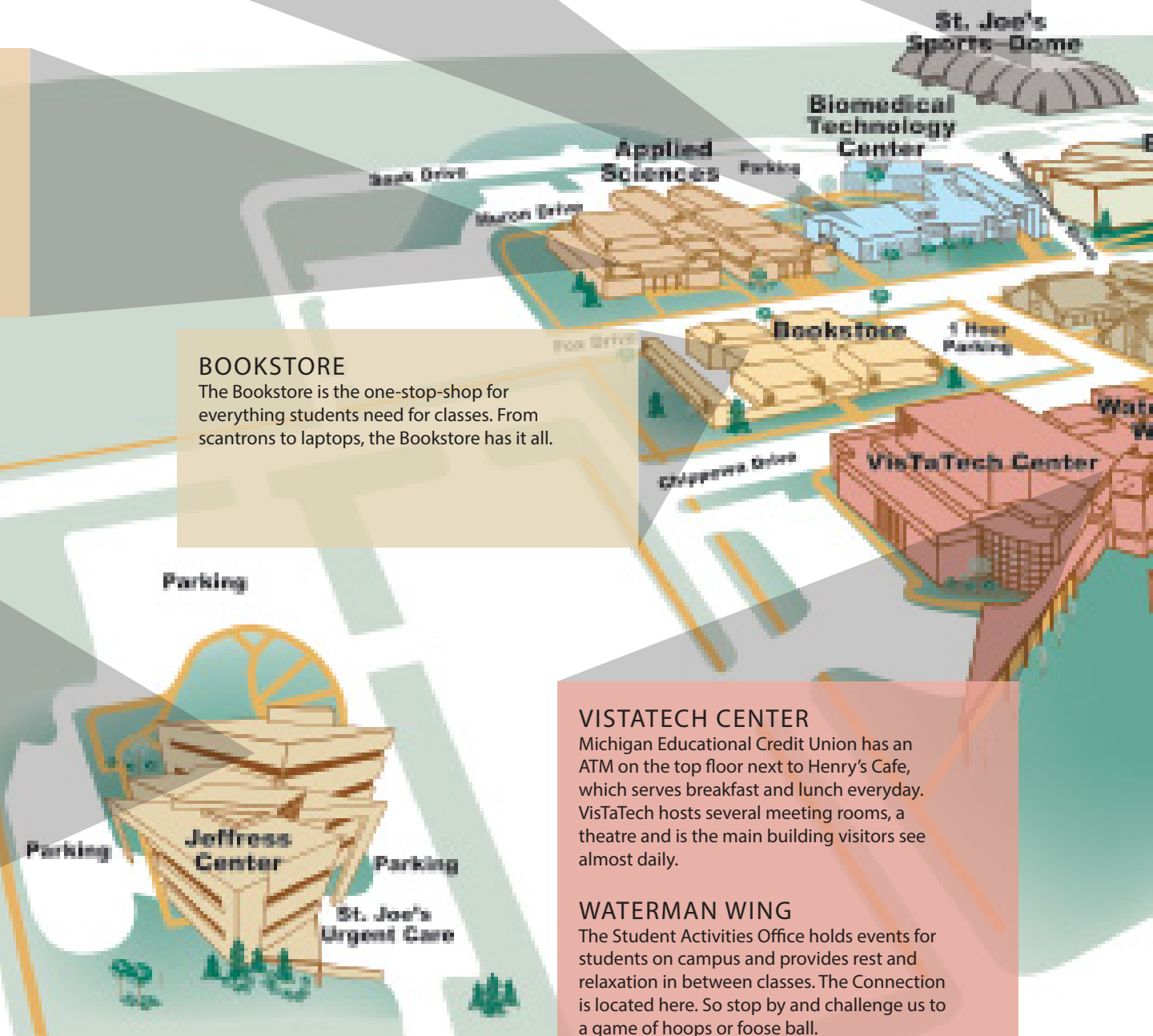
Named after President Conway Jeffress, the Jeffress Center is the newest building on campus. Inside students will find the JC Cafe, St. Joe's Urgent Care and Campus Police. CGT and photography students will use this building heavily during their Schoolcraft tenure.

VISTATECH CENTER

Michigan Educational Credit Union has an ATM on the top floor next to Henry's Cafe, which serves breakfast and lunch everyday. VisTaTech hosts several meeting rooms, a theatre and is the main building visitors see almost daily.

WATERMAN WING

The Student Activities Office holds events for students on campus and provides rest and relaxation in between classes. The Connection is located here. So stop by and challenge us to a game of hoops or foose ball.



PHYSICAL EDUCATION BUILDING

Gym classes and yoga classes are held here. Students can take advantage of the free Fitness Center to get in shape with a mini cafe nearby to catch a snack or small meal.

FORUM

Many of the science classes are in this building with Biology and Chemistry labs in a few of the hallways. Music can be heard playing throughout the day, and an auditorium is in the center of the building.

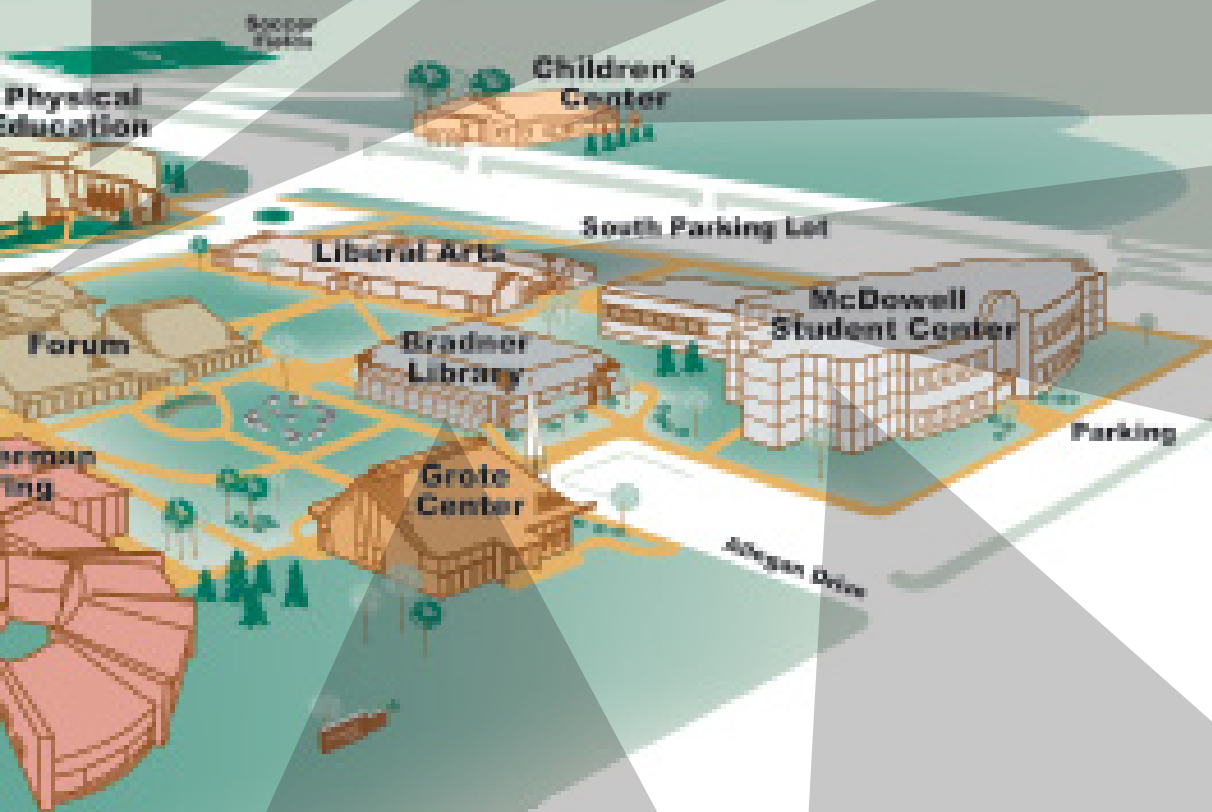
CHILDREN'S CENTER

Students or faculty with young under-school age children can be dropped off at this daycare while at class or work. Jobs are available to students in the Children's Center.

LIBERAL ARTS

Most general classes are held here with English, History, Theatre, and Psychology. The James R. Hartman Theatre is here with several plays to see throughout each year.

I-275 Freeway



BRADNER LIBRARY

Students come here to study and research projects they're working on for classes. Students wanting to study in groups can check out one of the several rooms available, equipped with computers and white boards.

MCDOWELL STUDENT CENTER

New students will visit McDowell often to either find jobs with Career services, meet with Advising, take Student ID pictures, take a placement test in the top floor, or talk with Financial Aid. The testing center and Veterans Resource Center are located on the top floor while a computer lab sits in the bottom floor.

CAMPUS MAP



**Schoolcraft
College**

contact info and numbers...?

NEW
YEAR,
NEW
US

**SCHOOLCRAFT
CONNECTI**  **N**

#StayConnected

Rebranded & Revised for you

COMPILED BY CONNECTION STAFF

With 31 awards across two separate committees last year, Volume 31 was quite the rewarding season, but there was still room for improvement. We decided to look internally and see what we can do as a publication to better serve our audience. We noticed that we weren't providing the most relevant information to the campus community. We lost the student's perspective, but now, we've rekindled our vision.

We have dedicated ourselves to be as accessible and reliable as possible. That is why we have cut the size of the paper, redesigned our logo and prioritized Campus Life and News before all else. We want the Schoolcraft Connection to be your one-stop-shop for everything you need to know on and around campus.

As part of improving the paper, we also plan to deliver content that is more relevant and local, within our Arts & Enter-

tainment section. We will now focus on putting out reviews based on the latest and most trending releases.

As far as making the A&E section more local, we plan on reviewing and covering more events, not only on campus, but in the local area as well.

Everything about us was changed to better serve the campus community and their needs. A smaller size to be easier and more convenient to read. A more interesting layout design to be eye-catching and entertaining. We are publishing stories online to Schoolcraft-Connection.com when they're ready, so you don't get your news two weeks late. It's all about making it easier for you to **#StayConnected**.

This is the biggest overhaul in the history of the Schoolcraft Connection. It is something the publication staff values greatly, and we are excited to show you what we have been working on this summer.