

SCHOOLCRAFT CONNECTION

Vol. 32 | Issue 4 | October 29, 2018

News 5 | Feature 8 | Campus Life 9 | A&E 14



Welding Dept. Creates Sparks

Page 10

MIDTERM ELECTION COVERAGE:

PROPOSAL 3 P5 SCHOOLCRAFT BALLOT PROPOSAL P6 VOTER EDUCATION P12



Editorial

Rena Lavery
Connection Adviser

Christian Hollis
Editor-in-Chief

Alexis Tucker
Managing Editor

Kevin T. Ferguson
Layout & Design Editor

Evan Cerezo
Assistant Layout Editor

Marvin Poindexter
Arts & Entertainment Editor

Josiah Thomas
Campus Life Editor

Mai Nakhala
Photo Editor

Alex Zuccarini
Webmaster

Brittany Warren
Advertising Manager

Todd Stowell
Advertising Adviser

Staff

Christopher Falkiewicz

Raymond Falkiewicz

Chantele Fox

Kortinie Rollins

Tamara Turner

Sarah Wonsowski



Schoolcraft
College

Board of Trustees

Brian D. Broderick
Chair

Carol M. Strom
Vice Chair

Gretchen Alaniz
Secretary

Eric Stempien
Treasurer

William P. Erwin Jr.
Trustee

Joan A. Gebhardt
Trustee

Terry Gilligan
Trustee

Conway A. Jeffress
President

EVERY VOTE MATTERS

We are told from a young age that every vote counts, that every vote matters, but as we grow older, people learn to think that their one vote won't change anything. That thinking becomes problematic when many people think that way, and that plays into how we get a government that doesn't represent the people. According to civicyouth.org, only 19% of 18 to 29 year olds voted in 2014.

Your vote can represent more than self-interest. Your vote can signify doing the right thing. We reserve the right to run our country through the way we vote for candidates. They need to represent both our own best interests and the right direction for our country to follow.

Lately, we have noticed career politicians and their reckless allies steering our country in a dangerous direction.

We can change this. It's up to us to take the long string of usurpations and abuses that career politicians have used to put us under their designs for despotism and then throw it off by voting for leaders who understand our rights in relation to God and exercise them accordingly, like the founders of our country intended. Furthermore, we need politicians who will not sell us out to lobbyists or special interests that will leave us in a position powerless to stop the abuses that are ripping apart our country before our own eyes. We will stay on this trajectory unless we cast our vote.

Yours truly,
Schoolcraft Connection staff

OPINIONS

Trump tariffs doing more harm than good

JOSIAH THOMAS
Campus Life Editor

The tariffs imposed by the Trump Administration were meant to protect U.S. jobs by creating policies that would renegotiate trade agreements, solve the trade deficit and invest in the creation of jobs here in our country. They haven't accomplished this task, and they won't. Forty-eight of the sixty economists surveyed by Reuters reported that the Trump tariffs on steel and aluminum imports "would be a net harm to the U.S. economy" and the rest of them believe that tariffs won't be effective or a benefit for the U.S. economy. President Trump wanted to "put America first" on the stage of world trade, but we've been set back instead.

It does seem odd to say that when our economy has seen strong growth in the past year. It's true that the job market is doing well overall, but there's

another side to that story. To say that we are all in good times simply because the unemployment rate has fallen to lows not seen in decades overlooks the bigger picture. It's misleading to say that the economy has improved simply because the Trump tariffs were put in place.

No, that assessment ignores what is happening in the trade and manufacturing sectors of the market such as the automotive industry. Two-thirds of the average American car is made of US-supplied parts, but many of the parts in that same proportion come from imported

steel and aluminum. These parts do come from countries such as China, known for their rampant human rights abuse. Our jobs were outsourced to those areas because cheap labor there makes it impossible for our workers to keep up.

It would be best if all of our parts and manufacturing were domestic, but it begs the question: What is the plan after the government places tariffs that make it so costly to outsource our parts that businesses in most major job sectors are fighting them?

The Detroit News reported that steel "now costs more in the United States thanks to President Donald Trump's tariffs." How are the automakers, who are among the biggest job-creators in our state, supposed to make up for what they are losing in terms of supply without restructuring that results in job losses due to

"Tariffs" Page 13 ►



Tamara Turner/Graphic Artist

A new era: PlayStation changes position cross-play

CHRISTIAN HOLLIS
Editor-in-Chief

After countless blog posts and #ShameSony tweets, PlayStation has conceded to gamers and implemented cross-play for "Fortnite" and promises more games to be added in near future. We, the consumer, won the fight for cross-play. This

historical change in the industry proves the power of the voice of consumer.

In addition to cross-play, Sony has allowed players to install PlayStation 2 and PlayStation 4 games from the PlayStation Now service. This comes as no real surprise considering Microsoft's recent financial report boasting \$10 billion of

revenue in gaming, crediting much of it to their new service "Xbox Game Pass."

Sony also announced they are allowing PlayStation Network users to change their PSN ID. The program is currently in beta and will be allowed to all user in 2019. The idea of changing your in-game name isn't new to the industry. Microsoft

has had this since the early days of Xbox Live, but due to community outcry over the years, especially in recent months, Sony felt obligated to implement the feature.

Is Sony turning around?

It's true Sony has dominated the industry this generation with their

"Cross-play" Page 13 ►

The Schoolcraft Connection is the award-winning, student-run newspaper published semi-monthly as an educational experience by the students of Schoolcraft College, 18600 Haggerty Road, Livonia, Michigan, 48152-2696. The editorial offices of The Schoolcraft Connection are located in the Student Activities Office on the lower level of the Waterman Campus Center.

The Schoolcraft Connection is a member of the Michigan Community College Press Association, the Colombia Scholastic Press Association, College Media Advisers, the Student Press Law Center, Community College Journalism Association and the Society of Professional Journalists.

Editorial Policy: Unsigned editorials represent the majority opinion of the Editorial Board. Signed columns solely reflect the opinion of the writer. The Schoolcraft Connection abstains from criticism of, or discrimination against any person on the basis of race, creed, color, sex, age, marital status, handicap, national origin, or sexual orientation.

The Schoolcraft Connection is a student forum and is self-monitored. We reject censorship and support a free student press. Material in The Schoolcraft Connection may not be reproduced in any form without prior written consent.

The Schoolcraft Connection corrects all errors of fact. If you have discovered an error, please contact the Editor in Chief, 734-462-4422, or sceditor@schoolcraft.edu.

OCELOT OPINIONS



@SchoolcraftConnection:

"What is the most important issue up for voting on this year's ballot?"



Jarvis Byrd

Graphic Design

"The Schoolcraft proposal. If that doesn't go through, tuition will increase."



Sheila Guedes

International Business

"I've been hearing a lot about the Millage Restoration, and of course the weed proposal."



Dylan Brang

Broadcast and Media Arts

"All of the issues about the oil drilling in the Great Lakes."



Alexys Williams

World Language

"I haven't done much research for issues on the ballot."



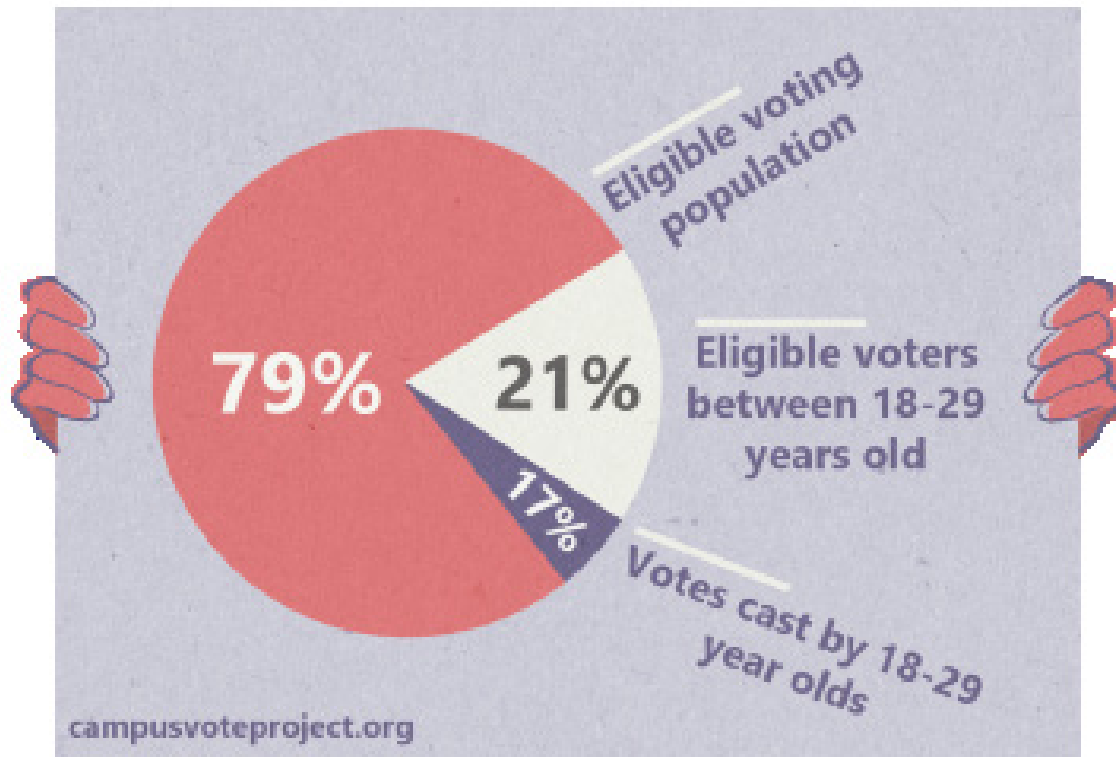
Transfer more of your credits!

We pride ourselves on being one of the most transfer-friendly universities around. We accept up to 90 transfer credits, including both classroom and some work experience credits. We have programs that can help you earn your bachelor's degree in as little as one year. And we offer transfer scholarships up to \$4,000!

Contact us today about earning your degree in business, technology or health!

(800) 686-1600 | davenport.edu/apply

**DAVENPORT
UNIVERSITY**
that where the world is going



Tamara Turner/Graphic Artist

Ballot proposal to make more people eligible for absentee votes

CHANTELE FOX
Staff Writer

Michigan Proposal 3, Voting Policies in State Constitutional Initiative, will be on the ballot during the 2018 Midterm Elections on Nov. 6. This is an initiated constitutional amendment, which if passed by the voters, will add several voting policies to the Michigan State Constitution. Policies to be added or amended would include straight-ticket voting, automatic voter-registration, no-excuse absentee voting and same-day registration. A “yes” vote will support the addition of new policies and amend existing ones, while a “no” vote opposes the addition of new policies and for existing ones to remain as they are.

HOW THESE CHANGES AFFECT STUDENTS

Young adults ages 18-29 years of age account for nearly 21 percent of the eligible voting population in the United States, and of that percentage, only 17 percent cast a

vote in 2014. What deters students from voting?

“Voters are mobilized around their physical residential address, for young people living in dorms or even moving around after college, this is a problem,” writes Quentin Kidd, writer from The New York Times. “Students live on campus for eight or nine months of the year, and whether they can vote where they go to school depends on the registration laws of the state.”

As of today, Michigan is only one of 20 states that require reasoning when applying to obtain an absentee ballot. As such, an option is not included for those individuals who are of age to vote and enrolled as students in classes of higher education, thus disqualifying them to obtain an absentee ballot in the state of Michigan.

According to michigan.gov, the current Absentee Voting Policy states that in order to be eligible for an absentee ballot citizen

Blessings in a Backpack

CHANTELE FOX
Staff Writer

The Omicron Iota Chapter of Phi Theta Kappa has partnered with the Blessings in a Backpack Program and Livonia Public Schools in collecting non-perishable food items now until Nov. 15, focusing on the issue of childhood hunger and families who are experiencing food insecurity. Such items can include: canned soups, granola bars, canned fruit, crackers, canned ravioli or spaghetti, macaroni and cheese boxes, etc. Phi Theta Kappa will proceed to help fill backpacks at the designated elementary school within the Livonia School District Nov. 27. The location is to be determined and more information will be provided as the date grows near. This

“Blessings” Page 18 ►

Join Phi Theta Kappa
in Serving your Community

**Donate to
Blessings in
a Backpack**

Helping “food insecure” children in Livonia Public Schools

Donate non-perishable food items now through
November 15th.

Sample of items needed:

- Canned soups
- Granola bars
- Individual instant oatmeal
- Canned fruit
- Mac and cheese boxes
- Canned ravioli/spaghetti
- Canned tuna/chicken
- Pork and Beans
- Crackers

Please Bring donations to the Student Activities Office, Lower Level, VisiTech Center, or call 734-462-4422 for items to be picked up.

The Blessings in a Backpack program addresses the problem of childhood hunger. Each week backpacks are packed by volunteers and distributed to the participating Livonia Public School children who are considered “food insecure”.

For more information, contact the Student Activities Office at 734-462-4422.

“Ballot” Page 9 ►

Schoolcraft on midterm ballot

Proposal aims to restore millage rate, resolving \$7 million deficit

CHRISTIAN HOLLIS
Editor-in-Chief

Schoolcraft College will appear on the ballot Nov. 6 to increase the mills rate from 1.76 to 2.27 in the Clarenceville, Garden City, Livonia, Northville and Plymouth-Canton school districts to resolve a \$7 million structural deficit caused by several economic factors. If approved by voters, the additional 0.5038 mills would raise approximately \$7,136,000 and would stabilize Schoolcraft College's finances. Homeowners within the districts holding a property value of \$200,000 would pay an additional \$48 a year in property taxes.

In 1986, Schoolcraft reached out to voters to set the mills rate to 2.27, but after several economic factors have created a shortfall in annual funding for Schoolcraft. The ballot proposal seeks to restore the mills rate given in 1986. At the 1.76 rate, Schoolcraft

College currently receives the same amount of property tax it did 12 years ago.

Over the past few years, Schoolcraft College has cut costs and has expanded revenue raising programs such as partnerships with Wayne State and other four-year universities. The college has also leased land to outside businesses such as the St. Joes Sports Dome. In 2017, Schoolcraft conducted a buy-out of faculty and staff, saving \$1.6 million in annual savings in addition to prior buy-outs in 2010 and 2013 and has deferred maintenance to save \$2 to \$3 million a year since 2013.

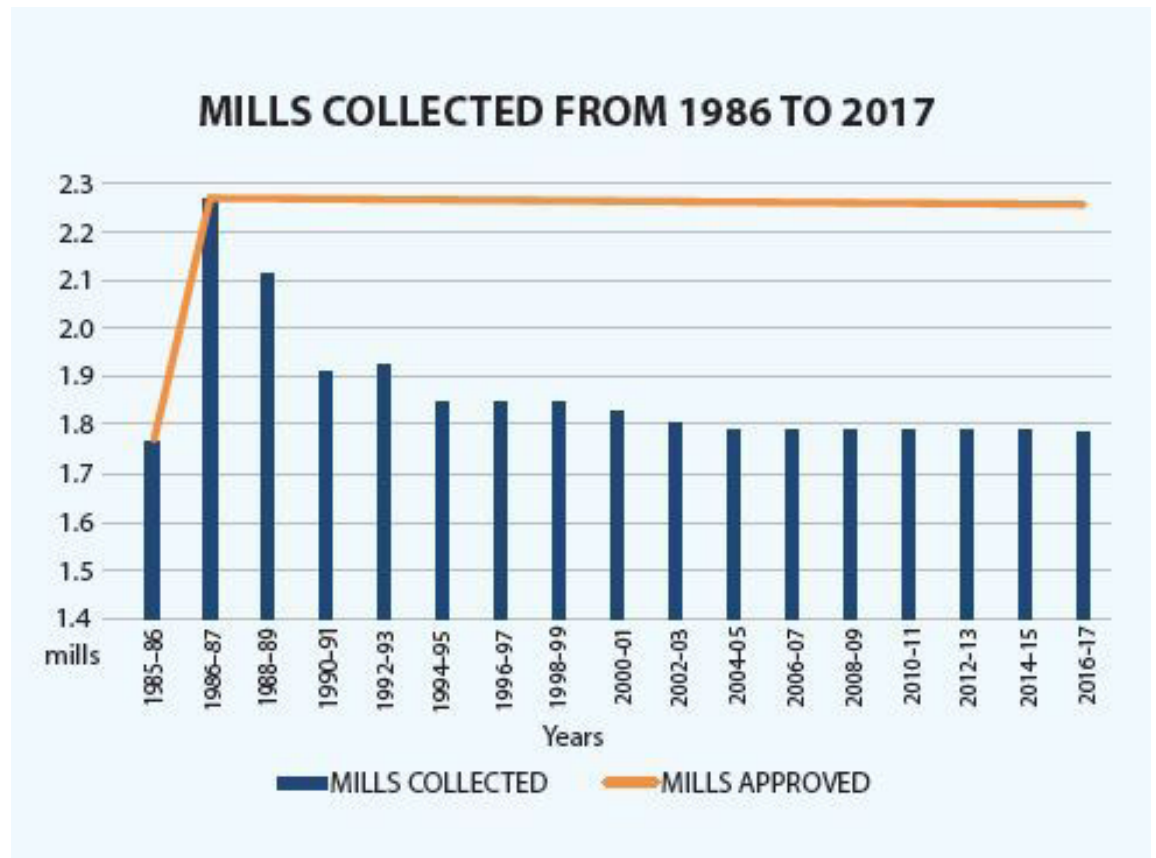
"Compared to all other community colleges in Southeast Michigan, we get the lowest state aid revenue per credit hour and second lowest property tax revenue credit hour," said Jon Lamb, Controller and Director of Finance at Schoolcraft College. "On top of that, our current millage rate is well under the statewide average. We charge tuition and

fees that are reasonable when compared to other community colleges, yet have the lowest cost incurred to produce 1 quality credit hour. Spending any amount of time researching our annual financial reports, which are audited annually by independent CPA's, in connection with looking at the level of credit hours produced, it becomes clear that we do not have an

expenditure problem, we have a revenue problem. We asked the voters to support Schoolcraft College in 1986 by approving the authorized millage rate of 2.27, because we need that level of support to operate. Without it, [Schoolcraft College] as it exist today, is set up for eventual financial failure."

Schoolcraft College spends \$890.19 to produce a quality credit hour. A qual-

ity credit hour equates to the total credit hours multiplied by completion rate. The average community college spends \$1,206.02 to produce a quality credit hour. Schoolcraft College produced 120,120 quality credit hours in 2017. Though Schoolcraft spends the least amount to produce a quality credit hour, the amount the college receives is still too low to



Graphics courtesy of Schoolcraft College

Voters approved the 2.24 millage rate in 1986, but due to several economic factors, the rate has decreased to 1.76. Schoolcraft College receives \$200 less than the average community college in south-east Michigan. The lack of funds has caused a \$7 million structural deficit. Schoolcraft is asking voters to restore the millage rate Nov. 6. If approved, the college will receive \$7,136,000 from property tax revenue, balancing out the deficit. Schoolcraft College's proposal will be on the bottom right-hand corner of the ballot.

break even.

In comparison, the average community college in Michigan receives \$252.31 per credit hour of state-aid while Schoolcraft College receives \$153.49. Schoolcraft College receives \$195.83 per credit hour from property taxes, \$200 less than the state average \$396.56. The only other main source of revenue comes through tuition.

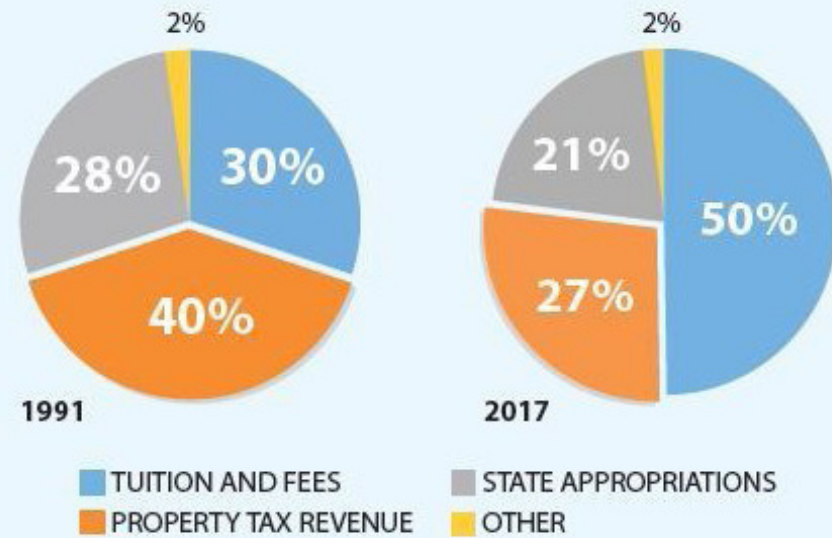
"We don't want to put that burden on students," said Schoolcraft College President Conway Jeffress. "We don't want people to carry over unnecessary debt when they leave here. (The ballot proposal) protects (students) as a primary source of revenue."

President Jeffress was asked by a student during

a Question and Answer session Oct. 18 on what happens to Schoolcraft if the proposal doesn't go through. President Jeffress noted, "There are tons of things here that we do that cost little to no money at all... We have a Jazz Festival every year, it costs them no money at all for our seniors or community members, but it costs the college about \$30 thousand to run. It's all those things that have to go away. It makes (Schoolcraft) a lot less attractive, I think."

Schoolcraft College's proposal will be on the bottom right-hand corner of the ballot. For more information on the Schoolcraft Ballot Proposal and other issues for the Nov. 6 election, visit page 12.

SOURCES OF SCHOOLCRAFT'S REVENUE



In 1991, tuition made up 30% of source revenue while property tax revenue made up 40%. Over the years, revenue from taxes has decreased to 27%, and revenue from the state has decreased 7%. The lack of revenue from state and community sources has resulted in higher tuition.

THE BALLOT READS:

Shall the Schoolcraft College District, County of Wayne, Michigan (consisting of the following public school districts: Clarenceville, Garden City, Livonia, Northville, Plymouth-Canton), be permitted to restore for a ten year period, beginning in 2019, the 1986 voter-approved millage rate of 2.27, by assessing an additional 0.5038 mills (\$0.5038 per \$1,000) on each dollar of taxable value of all property in the District, which rate shall be assessed through 2028 without further reduction by Section 31 of Article IX, State Constitution of 1963. If approved and levied in its entirety, the additional 0.5038 mills would raise approximately \$7,136,000 in 2019.

★ IT TAKES ★
6 HOURS
 OF PREP TO MAKE A
30 SECOND
SANDWICH
 — FREAK YEAH! —



VISIT JIMMYJOHNS.COM
 TO FIND A LOCATION NEAR YOU

'Mountain Movers' seeks to help struggling students

Therapy, for many, can be hectic and drawn out. There are times when someone just needs a place to release what they have built up inside. This is where Mountain Movers, a club on campus, may be what someone needs to talk to someone and listen to others.

Mountain Movers was founded by student Joshua Walker. The club holds meetings every Tuesday from 2 to 3 p.m. in the Lower Waterman, VisTaTech Center. With the help from Vice President Bobby Schutter, the club's main focus is on helping people with problems they may have such as dealing with depression and anxiety.

"Anything that can help students, that's what we want to do," said Mountain Movers President Joshua Walker. Walker's leadership is visible on campus and if students are in need someone to talk to Walker doesn't hesitate to help. "I am typically here Monday through Friday, so don't be afraid to ask if Josh is here. Help is never that far away."

Mountain Movers was founded in 2017 because of Walker's promise to his late father to fight his own depression. This led to him wanting to help others with depression or mental illness as well. The name "Mountain Movers" was formed from when Walker came across a verse in his bible that had said, "If you have faith as small as a mustard seed you will be able to move a mountain."

Students who are interested in joining Mountain Movers can join by going to the Student Activities Office filling out a member application form. Walker believes that anyone has the ability to do anything they put their mind to and holds that as his most important belief in the club, such as ambition, consistency and motivation as a few core values.

Mountain Movers plans to have outreach events on campus in the near future such as bringing in guest speakers to talk about disorders as well as having booths for different topics like mental health, suicide and depression.

For more information on Mountain Movers, call the Student Activities Office at 734-462-4422.

• Suicide is the 2nd leading cause of death in Michigan for 15-34 year olds.

• On average, 1 person dies by suicide every 16.2 minutes.

• About 2/3 of people who complete suicide are depressed at the time of their deaths.

• Depression that is untreated, undiagnosed, or ineffectively treated is the number 1 cause of suicide.

• There is 1 suicide for every 25 attempted suicides.

STORY: CHRISTOPHER FALKIEWICZ, STAFF WRITER
DESIGN: TAMARA TURNER, GRAPHIC ARTIST



Mountain Movers

An Indiscriminate service, that caters to everybody.

CAMPUS LIFE

New challenger arrives soon

Project Playhem participates in tailgate at the University of Michigan for Nintendo's big exclusive

CHRISTOPHER FALKIEWCZ
Staff Writer

"Super Smash Bros. Ultimate" is a highly anticipated platform fighter published by Nintendo. On Oct. 13, Nintendo gave University of Michigan a sneak peek at the new Smash Bros game in the series that will hit store shelves Dec. 7 ready to be purchased. During this tailgate, Project Playhem attended the event with 5 members including the President Kyle Smith and Vice President Ashley Ussery.

"The Smash Ultimate tailgate was a very awesome experience as my first tailgate event," said Kyle Smith, President of Project Playhem. "I would love to do it again."

Attendees of the tailgate got to play the demo for "Super Smash Bros. Ultimate", which featured a variety of returning characters including Little Mac, Zelda and Mario as well as a new character Ridley. Several characters' move sets have been updated from previous such as Link, who now has remote detonating bombs taken from "Legend of Zelda: Breath of the Wild."

There were a few different tournaments with each tournament having a variety prizes like Wendy's gift cards for free food and some "Super Smash Bros Ultimate" apparel such as shirts, lanyards and hats.

"I like it and love it and it has been exhilarating," said Professional "Super Smash Bros." player Jon "Sol" Lackey.

The last tournament they held made two players compete against each other in a timed match for 3 minutes. To win, players had to have the most KOs of the match and that winner would be challenged by one of the people in the crowd, which kept running for an hour straight. Sol had nine wins in a row, but he lost towards the end.

"Michigan was an absolutely amazing state to come to there was so many smash clubs from so many different areas," said Hollywood Gene, Announcer for the tournaments.

"Michigan State, University of Michigan... Ferris was here... Wisconsin was here. Just so many different schools to represent the community."

There was a diverse audience, representing many schools. The event was built around The University of Michigan vs Wisconsin Football game, which contributed to the variety of different schools and people in the event.

For a full run down on "Super Smash Bros. Ultimate" visit schoolcraftconnection.com/2018/09/11/the-ultimate-smash-dream/



Christopher Falkiewicz/Connection Staff

Project Playhem President Kyle Smith plays as his favorite fighter, Little Mac. Smith has played every iteration of the "Super Smash Bros." series and was left speechless after the demo. "Super Smash Bros. Ultimate" is the largest game of the series, with over 70 characters and 103 stages, including ever character and stage from previous game Smith promises Project Playhem will host tournaments when "Super Smash Bros. Ultimate" releases Dec. 7.

BALLOT

Continued from Page 5

must state one of the following reasons: age 60 years or older, require or unable to vote without assistance at polls; expected travel during time of vote; in jail awaiting arraignment or trial; unable to attend due to religious reasons; appointed to work as an election inspector in a precinct outside of the inspector's home precinct.

Should this proposal pass, students would then become eligible to obtain an absentee ballot without reason, providing opportunity to vote where they go to school should they choose to do so.

"The greatest benefit of proposal three in regards to college students are that the absentee ballot can be acquired with no excuses needed," said Matthew Fular, Schoolcraft College student and Phi Theta Kappa Vice President of Service. "All of the people I know who are in college have a job, if not two, which makes it difficult to make time to go to the polls on the day of an election. Being able to request an absentee ballot with no strings attached would be beneficial for all those who cannot get out to vote without disrupting their daily lives."

WHAT TO EXPECT

Michigan currently does not allow for the straight-ticket voting. Straight-ticket voting, or straight-party voting, occurs when a voter makes a single mark on the ballot which will then vote for every candidate of the party during a partisan election such as federal, state and local races. Other policy changes would include automatic voter registration, which in the state of Michigan would change from no automatic voter registration to providing voters with automatic voter registration when renewing or obtaining a state ID or driver's license unless otherwise declined, as well as the deadline to register to vote in-person.

Currently, eligible individuals are able to register to vote in-person at the clerk's office 30 days prior to any election. The amended policy would allow voters to register in person at the clerk's office 14 days prior to the election, as well as same day at the polls. Lastly, the deadline to register to vote by mail would change from 30 days prior to an election to 15 days prior to an election.

For more information pertaining to Proposal 3 and other issues on the Nov. 6 ballot, visit michigan.gov/sos

Welding department makes sparks

Our own Mai Nakhala sat down with Schoolcraft's welding instructor Coley McLean to find out what makes the welding department one of the hottest spots on campus.

TELL US ABOUT THE WELDING PROGRAM, WHAT DOES THE PROGRAM OFFER?

This is my fourth year here, but I taught at Washtenaw Community College for 16 years. We made a lot of changes since I got here. We had to redo the whole curriculum, to make it more industry base, so we increased the credit hours by 120 and increased the class sizes. I was able to get permission and get an internship started so the students actually build five more workstations. We were the first college to start a pre-apprenticeship certificate, so we were the first college to develop that type of program.

In my first year here, we made this a test

facility, so we can certify welders. We are the only facility in Michigan that require the students to be certified to graduate. They can walk out with real credentials. We can also certify community [members]. Since I've been here, we've already certified more than 200 certifications and more than 60 from [the welding] industry so we're giving back to the community in that respect.

We have made a lot of changes. We can say that we've got 100 percent employment rate. The welding industry is starving for people.

We can find people jobs and actually we can find our students jobs after one semester.

We have six part-timers now. We only had one before, so we're growing.

Our graduation rate has gone up tremendously because we offered more classes as before they were limited, so now we are really 7 days a week, we are here all the time; morning, afternoon and evening.

Our students are



Above: Instructor Debra Stuart Demonstrates the Metal Welding process.

Right: Welding Department labs includes the equipment the students need for their learning that include workstations built by students, Welding camera, Fabrication are and industrial equipment.



mainly focused in structural welding. We do all aspects and they still do a lot of inspection so there is a lot of money on that, metal energy is still big part of what we do, our students actually get a well diverse understanding of welding, also the hands on which actually makes us unique in that respect.

We are also involved in the skills USA competition. We do that annually it is usually on April. We usually place at least second and third.

WHAT'S THE AVERAGE SALARY FOR WELDERS?

It starts out at \$10 and goes up to \$20 per hour. Usually the graduates are the ones who will make more money, but it all depends on the person because everyone has different skills.

We have a good partnership with the local union... and iron workers, so if they actually get their degree here then they can start off in that Union trade at a higher level by having that background. We also have an articulation with a 4-year, so Pentek is where we are sending our students who are going for 4 years, because welding engineering is huge right now.

Welding engineering technology is really in demand and experience is not required, just the education because (the industry) are starving for welding engineers.

ARE THERE ANY SKILLS STUDENTS SHOULD ALREADY HAVE, IF THEY WISH TO ENROLL IN WELDING PROGRAMS?

We start everybody



Six student-made metal sculptures will be displayed across campus. Two of which were created by Marilyn Strandt named "Wings" and "Set your Goals on Fire".

Mai Nakhala/Photo Editor

out from scratch, but it will be helpful if they know basic math and take measurements, some science, communication skills and work ethic. The way we teach work ethics is to give certain amount of tasks that they have to accomplish, because what they will do in the real world. We're overloading them and also make them responsible for the work. We have objective sheets and they have to be in charge of their sheets so if they lose their sheets, they lost everything they've done and they have to start over. Showing up on time is important, so you got to do your job and to be proactive.

If you are building a bridge, you don't want it to collapse and don't want it to be too short. We also incorporate everything in welding, English and science, technical writing. Students have to write reports on their welds. I always tell the students anytime you write something

on paper, you are already worth more money because you are not the production person anymore. We are using a lot of technology we are using welding apps in our classes, report apps and inspection apps.

ARE THERE ANY CONTINUING EDUCATION CLASSES OFFERED?

We don't offer continuing education because we are maxed out, we don't have the space and time, but we do have a lot of workforce training for industries, so industries will call us. We can make customized training programs for them.

We also offer the class Weld110, which is a basic level class, you don't have to have any background and it will count toward the program, it is a really good class to introduce students that has no background, Weld110 is included as elective in many programs, it is a really great into class.

We also have students from high school up to super retired. We have a really diverse group.

Campus to host voter education event

CHANTELE FOX
Staff Writer

Together, in an effort to further educate students and provide them with resources and information pertaining to the Midterm Elections, the Department of Sociology, the Service Learning Program, Up to Us, and Phi Theta Kappa are sponsoring Voter Education on Issues and Candidates: Student Civic Engagement Research. The event will be held on Nov. 5 from 11:00 a.m. until 12:15 p.m. in the Student Activities Center, Lower Waterman of the VisTaTech Center.

Civic Learning is a means of promoting student education and engagement through purposeful participation in the community, social learning events, advocacy, and

community-based research. "This is an opportunity to learn about some of the items on the upcoming ballot that may most impact their lives," said Karen Schumann-Beltran, Service Learning Faculty Coordinator and Asst. Professor of Sociology at Schoolcraft College when asked how this event will benefit students. "I never tell my students how to vote, only how to access reliable information and data. It is up to each individual to determine what is in their best political interest. The important thing is to get out and vote, to have a voice, and to take control of their own destiny."

Attendees will receive more in-depth information concerning the candidates for governor, ballot proposals pertaining to the legal-

ization of recreational marijuana, fiscal policy, and protecting Michigan waters. Moreover, there will be further discussion referencing the Schoolcraft College ballot initiative which seeks millage restoration to the College for the next 10 years. Students will learn about how this ballot proposal benefits the student body, the campus, as well as the community.

"This is a voter education event where our Principles of Sociology class will present their civic engagement research on the upcoming elections," said Schumann-Beltran, speaking in reference to the upcoming Civic Engagement event. "As social scientists, we are trained to find valid and reliable data and sources of information, which seems to be in short supply during

political elections at times. This presentation on the candidates for governor and two ballot proposals (one local, one statewide) is the result of that training."

As much focus is being placed into the hands of the upcoming Midterm Elections, emphasis on voter engagement is higher now than in past elections, with a percentage of voters stating they feel they are just as crucial as the 2016 Presidential Elections. In this regard, in order to make informed decisions at the polls, voters should take it upon themselves to become educated on the issues and candidates presented to them on the upcoming ballot.

For further information pertaining to the Civic Engagement event, please contact the Student Activities Office at 734-462-4422.



DEARBORN

Discover why UM-Dearborn is a great destination for transfer students. Meet with an admissions counselor to learn more about our campus, scholarships, and degree programs.

Check out our Schoolcraft College website for upcoming visits and transfer information.

umdearborn.edu/schoolcraft
313-593-5100

**GO BLUE!
GO DEARBORN.**

The Degree
that Makes the
Difference™



FREE STUDENT ACCOUNTS
Your Money Moves with You.

Access to your money now & into the future

- No minimum balance requirements
- No monthly account fees
- Free Mobile Banking, eBanking & eStatements

Open your account today!

 **COMMUNITY FINANCIAL**

CFCU.ORG | 877.937.2328

Federally Insured by NCUA. ©2018 Community Financial

TARIFFS

Continued from Page 3

cost-cutting? The Ford Motor Company cites the new Trump tariffs as the direct cause of its recent \$1 billion loss, and they oppose the tariffs because their global business is now uncertain despite being able to source most of their steel and aluminum from U.S. businesses.

The outrage even extends to some staunch conservatives. Richard Smallwood, President of Sumitomo Rubber North America, who describes himself as being “pretty far right-wing conservative” and “deeply pro-military,” noted, “I’m somebody who believes in protecting America [...] But the product coming in doesn’t damage any of that. Business is so global now we have to have these global supply chains. To say that because we’re importing some parts, that it weakens our industry, that’s nonsense [...] It just leaves less money for us to invest in modernizing our plant here or hiring new people”

According to The Wall Street Journal, Trump’s tariff on imported aluminum and steel “would inflate the price of such parts” at a rate of 10% for aluminum and 25% on steel. The steel industry successfully petitioned for relief on tariff lines for chemicals and raw materials needed for steelmaking imported from China. This move has earned criticism of preferential treatment by the Trump administration because the current Commerce Secretary is

“The outrage even extends to some staunch conservatives. Richard Smallwood, President of Sumitomo Rubber North America, who describes himself as being “pretty far right-wing conservative” and “deeply pro-military,” noted, “I’m somebody who believes in protecting America [...] But the product coming in doesn’t damage any of that.”

Wilbur Ross, a long-time investor in steel companies who was responsible for leading the process that set up these tariffs. Trade experts and industry representatives have observed that you can only make a solid case if you have a close relationship with those in power, stating “the system is geared toward companies with the most resources and access to government officials,” according to The Wall Street Journal.

Furthermore, the now-revoked newsprint tariff placed such a strain on small local newspapers across the U.S. closed down because of it. Even large newspaper companies laid off some factory workers. The newsprint tariff was imposed on allegations that Canadian newsprint manufacturers were selling their goods at artificially low prices, flooding the American market with cheap newsprint. That assessment was debunked by the International Trade Commission because they found that importing paper from

Canada posed no risk of material injury to U.S. paper producers.

Canada provides most of the paper that our country’s free press relies on. The U.S. has had to cope with higher newsprint costs despite the overturning of Trump’s tariffs on newsprint, imposing costs that have “socked newspaper publishers with substantially higher expenses at a time when the industry is already under pressure as readers and advertisers shift to digital distribution and print advertising dries up,” according to The Wall Street Journal.

The fact that there have been so many petitions to get relief from the Trump tariffs cannot be a product of chance or coincidence. This policy, which has started the U.S. on high foreign trade prices until domestic sources play catchup, has backfired and will continue to do so until negotiators can reach an agreement on concessions that should take the world economy into the direction it needs to go.

CROSS-PLAY

Continued from Page 3

high-quality exclusives, but where they’ve fallen short is in services, but now it seems they’re increasing their value.

Why would they do this towards the end of the PlayStation 4’s life cycle?

They must be gearing up for the next generation, and with the news of cross-play and updates to current services, Sony might be on track for dominance. When Sony announces the PlayStation 5, or whatever their next generation console is called, they will be able to say “We allow streaming and downloadable options for PlayStation Now, we will let you change your name and we will let you play your games with anyone, no matter what system it’s on.” This will make the PlayStation Network and PlayStation 5 the best gaming ecosystem available, and it’s all because of the voice of the consumer.

If there’s anything to learn this console generation, it’s that the consumer’s voice matters. Sony is listening to our voices too. A healthy gaming industry is one backed by a loud voice of the consumer.



WE ARE HIRING

News Editor
Sports Editor
Staff Writers

Staff Photographers

Come see us in
Lower Waterman!

734.462.4422

ARTS & ENTERTAINMENT

Out of this world for that price

ALEXIS TUCKER
Managing Editor

Finding a fairly inexpensive headset that is good quality is hard to come by, especially with so many brands only boasting quality product with a hefty price tag. The more inexpensive the less likely the headset is to last for brands such as Turtle Beach, Afterglow, first party headsets and more. Astro is known to be a quality, luxury brand in gaming, but is their lower end, affordable headset line the Astro a10 worth it?

Having gone through countless Turtle Beach headsets, Turtle Beach may have some nice sound, but Decent Turtle Beach headsets range between \$50 and \$80 and their higher end lines go up to even \$250 or more. Unfortunately, they usually do not last long.

The Turtle Beach XO Fours are all black with green detailing and cushioned ear covers but feel too heavy. They are around the same price as the a10. They felt fairly nice around the head, the ear cushions were comfortable and the sound quality was good for what was paid for. However, after a few hours of gaming, the headset would feel like a vice squeezing your head. Another downside is they are noise cancelling, but it doesn't sound like true noise cancelling. It appears as if the headset is so loud to create a noise cancelling affect.

Astros gaming headset review
Reviewed on Xbox One, PS4, Mobile
8/10



The a10s so far feel really nice and are lighter in weight than the XO Four. The design is sleek and are extremely similar to their more expensive models. The a10s feel a bit uncomfortable after a few hours of use, but they can be readjusted easily, creating a much more pleasant user experience than the XO Four.

The a10s feature a flip-to-mute mic, so flip up the mic and it mutes it, which there's a small click once it mutes. An amazing plus is how stretchy and durable the a10s are. They can be twisted around or contort in every which way, and there isn't even a hint of breakage. The sound quality is the same as the XO Fours, but they don't seem as loud. I get the same quality of sound at a lower volume, so what is happening around the player can be heard slightly with great game quality. The auxiliary cord is 2.0 meters long, so it being a wired headset really doesn't affect the quality of gaming.

Overall, the a10s are nicer and better to use than the XO Four, especially with the durability. Packed with high-end sound quality, the Astro a10 are the best choice for a budget gaming headset.



Image courtesy of gamestop.com



**Schoolcraft
College**

LEARNING SUPPORT SERVICES
Success Starts Here

Dear Peer Consultants,

When I start to write, I find myself able to get words on paper, but I struggle with sharing my work. My ideas are an extension of who I am; I do not know how to allow others to read my work without getting anxious about it. How can I make the revision process go more smoothly while still getting and accepting constructive feedback?

*Thanks,
An Inspired Student*

Dear Inspired Student,

Have no fear — you have gotten one of the hardest steps out of the way. Getting your thoughts on the page is often a challenging task, but once you have a partial or completed draft, revising begins. Whether this is a first draft or a third draft, it is natural to feel ownership for your work, which makes criticism seem extremely daunting. When it comes to the writing process, there are many ways to improve the revision experience for a writer. For example, you can benefit from taking breaks while self-editing your own paper; this will help you to have a fresh perspective on your writing. You can also reframe the way that you think about what revising is. Revising is not always removing full sentences or changing the order of paragraphs. Smaller edits can also make a large impact on how your work presents itself. Even the changes you make by adding words or descriptions as you type a copy of your paper are parts of revising a draft.

Another option you may find helpful is to read the paper aloud. Even if you just read the paper aloud to yourself, you have a better chance of catching any typos, repeated words, or confusing phrases and sentences. By rereading your own paper before you present it to your peers for a peer review, you can be more familiar with and confident in the ideas that you convey to your audience. The peer review process does not have to be nerve-racking. Beyond trying to prepare your writing on your own, you should try to keep in mind that your peers are facing similar struggles. They also may not feel ready to share their work; however, you should remember that all the advice or suggestions you receive are only intended to help improve your work (although you can always decline a suggestion if you feel that it does not accurately represent your ideas).

Overall, the revision process is implemented to build upon your work. While it is sometimes difficult to share your ideas in front of others, you should try to approach it with a positive attitude. The words in your writing represent your ideas, and revising with peers can give you the opportunity to make an impact on those around you. Feel free to visit us in the Learning Center located in Bradner Library for additional opportunities to grow in your writing process.

*Best Wishes,
The Writing Support Studio*

HARD WORKING AMERICANS
BANK ON US

WE ARE ALWAYS WITH YOU!

12 Full-Service Locations

Access to 30,000+ CO-OP Network ATMs

Mobile App

ZealCreditUnion.org

Totally FREE Checking!

**Open a free Checking Account with Direct Deposit,
Debit Card and eStatements and**

RECEIVE \$100!

*VisitZealOffers.org for complete program details



Henry's Food Court



November 5th – 9th Special

Sampler Boat, includes Wing Dings (3), Chicken Strip (1),
Mozzarella Sticks (2), French Fries, Small Fountain Drink
\$6.25

November 12th – 16th Special

Turkey Burger & Potato Chips
w/ Small Fountain Drink
\$6.25

Located in the VisTaTech Center, 734-462-5903



CLINICAL STUDY VOLUNTEERS NEEDED

You may be eligible to participate in a Clinical Study
if you are

- Male or female between the ages of 18 and 50
- In good general health
- Available to participate and for follow up for 44 weeks

This research study will evaluate the safety and immune
response of an experimental vaccine in healthy people

You could be compensated up to \$1,600 for your participation

To see if you qualify contact us at
734-627-4200

SRI Biosciences[®]

A DIVISION OF SRI INTERNATIONAL



ORIN
JEWELERS

NORTHVILLE GARDEN CITY
ORINJEWELERS.COM

FOREVER
IS JUST
BEGINNING


FOREVERMARK
A DIAMOND IS FOREVER

DE BEERS GROUP

© Forevermark 2013. November 2013. All rights reserved. All other marks are the property of their respective owners.

You focus on school



Let us pick up the tab

costs



**Schoolcraft
College**

Tuition and fees for 60 credit hours

\$8,495

Guard benefits for 60 credit hours

*State tuition assistance: **\$36,000**

Federal tuition assistance: **\$15,000**

Montgomery GI Bill: **\$ 7,500**

GI Bill Kicker: **\$ 7,000**

* Available only to Michigan National Guard students

**Call/text Jason Bejger:
734-249-0568**

**MICHIGAN
NATIONAL GUARD** 
miarmyguard.com

IT'S YOUR TIME.

IT'S YOUR MONEY.



Manage your accounts whenever and wherever it's convenient for you with Michigan Educational Credit Union's Mobile Banking solutions and Internet Home Banking. Need quick cash? We have ATMs right on campus, and you'll save money with our great savings and loan rates and lower fees.

So why not join MECU today? You're eligible for membership if you live, work or worship in Wayne, Washtenaw, Oakland, Macomb, Livingston or Jackson County. Sign up now at www.micheducu.org.



**Michigan Educational
Credit Union**

Plymouth Main Office
9200 Haggerty Road
Plymouth, MI 48170
(734) 435-9200



WWW.MICHECREDITUNION.ORG

This credit union is federally insured by the
National Credit Union Administration.

Livonia
(734) 261-1050

Ann Arbor
(734) 761-7505

Brighton
(810) 494-6000

Royal Oak
(248) 399-7473

Macomb
(586) 566-5599



**Schoolcraft
College**

Special Offers for Students and Employees



Prestige Eyewear

Unique Vintage Frames

Eye Exams • Contacts • Sun & Sport Glasses

Glasses for Infants through Seniors

Hours: Tues-Fri 10-6, Sat 10-2 • 734.523.1145 •  

Purple Building • 27854 Ford Rd. • Garden City, MI 48135

Employees with



Vision Insurance

12.5% discount on out of pocket costs!

You can find us on FB, Instagram, or Visit our website: www.prestige-eyewear.com

SPECIALIST HQ

In place of a traditional campaign, Treyarch implemented the Specialist Headquarters to give back story for the Specialists featured in Multiplayer. Each "mission" is introduced with a beautiful cutscene, but is immediately let down once the gameplay comes in. These missions are just tutorials for the specialists. Once completed with the tutorial, the player is dropped into a game against bots on easy mode and can only be played on harder difficulties after finishing it the first time, but since the tutorials are so long, it's hard to go back.

This is a sad excuse of a replacement of a traditional single player campaign.

BLACKOUT

Treyarch took the risk of dropping into the Battle Royale genre. Treyarch filled the map with pieces of Black Ops history. From Raid from "Black Ops 2" to Nuketown island from "Black Ops", Blackout is a map that fans already know from the start.

Players drop in with an empty inventory and have to loot through building to find weapons and armor. The beginning of each game is where most of the gunfights happen, but like all Battle Royales, once the player dies they are eliminated indefinitely. Vehicles are scattered throughout the map to rotate during zone closures. There are also zombies scattered around the map, and once defeating zombies, players have the chance to get weapons such as the Ray Gun which helps during the last few moments of the game.

Treyarch did everything right with Blackout, and it is by far the brightest mode in "Call of Duty Black Ops 4."

"THE ULTIMATE BLACK OPS EXPERIENCE"



CALL OF DUTY BLACK OPS

ZOMBIES

"Call of Duty Black Ops 4" launched with three zombies maps and an extra remake of the classic map "Five" for owners of the Black Ops Pass. "Blood of the Dead" is also a remake but adds interesting twists with new mechanics. "IX"-based in a roman arena, and "Voyage of Despair"-based on the crashing Titanic- are the all new maps for Zombies. Both of these maps introduce interesting story-lines and actual jump scares.

Zombies also bring in a leveling system similar to the one seen in Multiplayer. This leveling system provides extra incentive to continue playing the game mode and new maps distributed throughout the season.

As usual, Zombies best played with friends and are needed when chasing after easter eggs and achievements.

MULTI-PLAYER

Treyarch returns to show dominance in design in Multiplayer. There are ten new maps with 4 remakes from previous Black Ops games. The highly addictive prestige system returns with satisfying unlocks throughout gameplay. The player is constantly unlocking new weapons, camos, equipment and perks to give themselves a better advantage on the battlefield.

Unfortunately, the competitive playlists known as League Play has yet to be released, so competitive players have had to resort to third-party websites for competitive matches. For a game that is supposed to be the most competitive of its series, this seems like a major misstep on Treyarch's end.

Multiplayer is also damaged by the unbalanced weapon selection. Assault rifles deal a lot of damage both up close and from afar, specifically the ICR. The ICR is so dominant that everyone in the game is using it, which is frustrating. Treyarch has stated they will adjust weapon balance throughout the year, but for the time being, it's ICRs all day.

Multiplayer is going to grow throughout 2019, with an announced 12 maps to come in the future with the Black Ops Pass.

CHRISTIAN HOLLIS
Editor-in-Chief
Reviewed on Xbox One

■ ■ ■ ■ ■ ■ ■ ■ ■ ■ 7/10

BLESSINGS

Continued from Page 15

event is open to all students. Faculty, staff and Phi Theta Kappa welcomes anyone who would like to be involved. All donations may be delivered to the Student Activities Office located in Lower Waterman, VisTaTech Center.

Each week, Blessings in a Backpack volunteers fill backpacks with enough non-perishable food items to last the duration of a weekend. These backpacks are then distributed to children participating in the program within the Livonia Public School District. For those children who depend on school meals as their source of food throughout the week, being provided with food for the weekend is truly a blessing.

Breakfast is known to be the most important meal of the day. Studies have shown that eating breakfast push-starts the body's metabolism for the entire day and provides the body with higher levels of energy, increasing concentration and memory. Further, those individuals who eat breakfast tend to maintain a healthier weight, live a healthier lifestyle, and have decreased risk of heart disease, obesity and diabetes. Children are involved in daily activities, which require a high level of physical, mental and emotional energy. When breakfast is omitted from their diet, a child will become restless, tired, display signs of irritability, and begin to act out.

While the deficiency of breakfast reflects these behaviors, what happens if more than one meal per day is removed from a daily diet and how can we help? In the United States alone, 1 in 5 children are considered to be food insecure. Food insecurity occurs when there is a lack of access to food. According to Feeding America, 84 percent of families report that they are only able to purchase cheap food rather than the healthier foods. For more information pertaining to childhood hunger, please visit www.feedingamerica.org.

"Omicron Iota of Phi Theta Kappa is partnering with Blessings in a Backpack to ensure that no child goes hungry," said Catreese Qualls, Vice President of Communications for Phi Theta Kappa. "Please help us create a healthy learning environment by donating any non-perishable food items. Please spend some time thinking of items sitting in your cabinet or simply adding something to your next grocery list, and then bring those items to the Student Activities Office. Anything will help us reach our common goal of helping those children in need."

For more information pertaining to Blessings in a Backpack or how to get involved on campus, contact the Student Activities Office at 734-462-4422.

KORTINIE'S CULINARY CORNER

Harvest Steak Salad with Homemade Apple Cider

Total Time: 40 mins

Yield: 4

INGREDIENTS

- 4 cups of kale, torn into small pieces
- pinch of salt
- 1 1/2 cups halved brussel sprouts
- 1 cup diced sweet potatoes
- 1 tablespoon olive oil
- salt to season
- 1 tablespoon of grape seed oil
- 10 oz. boneless ribeye steak
- salt & pepper to season
- 1/4 cup crumbled feta
- 1/3 cup raw pecans
- 1/2 of a honey crisp apple, thinly sliced
- 1/4 cup unsweetened dry cranberries

APPLE VINAIGRETTE:

- 1 garlic clove minced
- 1 tablespoon dijon mustard
- 1 tablespoon maple syrup
- 2 tablespoons apple cider vinegar
- 1/4 teaspoon red pepper flakes
- salt & pepper to season
- 2 tablespoons olive oil

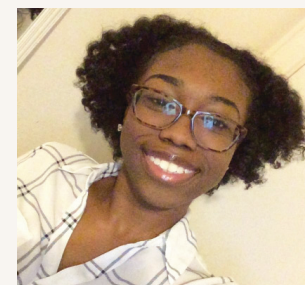
DIRECTIONS

1. Preheat oven to 400.
2. To a baking sheet add brussels sprouts and sweet potatoes. Drizzle with 1 tablespoon of olive oil and season with salt and pepper. Toss to coat all the veggies.
3. Bake vegetables for 20 minutes.
4. In the meantime, add torn pieces of kale to a large bowl. Add a pinch of salt and massage the kale leaves. (rubbing them together with your hands so they become tender and loose their fibrous taste) About 2-3 minutes. Set aside.
5. Generously season both sides of ribeye with salt and pepper.
6. Heat a large skillet to medium high heat. Add grape seed oil to skillet. Next add in the ribeye. Sear each side for 4-5 minutes. Remove from heat and let sit for 2-3 minutes, thinly slice.
7. To a small bowl, add garlic, dijon mustard, maple syrup, apple cider vinegar, red pepper flakes, salt and pepper. Whisk together. Then slowly pour olive oil into the vinegar mixture, whisking the entire time until the dressing is emulsified (the vinegar and oil no longer separate).
8. Assemble salad. Add Kale, roasted vegetables, crumbled feta, pecans, sliced apples and sliced ribeye to a large bowl. (or you can split into individual bowls)
9. Serve with dressing.



Meet the Chef

Kortinie Rollins serves as a student ambassador, and is majoring in culinary arts. Kortinie is passionate about food, and has plans to use her talents for the future, to one day open her own restaurant(s) in the state of Michigan.



Campus Crime

Disturbing Behavior

A Campus Police officer was dispatched to the Biomedical Technology Center Oct. 4 at 11:27 a.m. to meet with a female student wanting to report an incident. The student reported that she was seated in her Honda Pilot in the front row of the North Parking Lot when she reported that an unknown male suspect entered her vehicle through her front passenger door while she was seated. The suspect ignored her repeated orders for him to get out of the car, after which the victim exited her vehicle and walked to the Applied Sciences building.

She then returned to her vehicle to find

the suspect still inside her car, in the backseat, putting on a white lab coat that belonged to her. She opened her car door and told him once again to get out. The suspect left the vehicle and walked to the rear of the Applied Sciences building. The victim then went to class and did not report the incident until she phoned campus police at 11:24 a.m. She described the suspect as a skinny male, possibly Middle Eastern with long dark hair, and wore a white lab coat. The suspect reportedly rifled through her car's center console and glove-box, opened her bookbag and stole her white lab coat.

While the victim was interviewed, Schoolcraft Campus Police became aware of a situation that was ongoing with the Northville Township Police. The latter's description of their suspect matched a similar description at the Northville Meijer store on 8 Mile Road to the one reported by the female student here at Schoolcraft.

Later investigations concurred beyond any doubt that the suspect found at the Northville Meijer store was the same suspect re-

ported at Schoolcraft. Video footage and a cellphone photographs confirmed his identity. Northville Township officers reported several other similar statements made by the suspect in front of them.

Fight in Lower Waterman

A fight broke out in the Lower Waterman Wing of Student Activities Sept. 26 at 2:32 p.m. between two individuals. After the fight, officers interviewed both of the suspects. When they arrived, the officers found the two parties seated together at a table and appeared to be friendly with one another, with Subject A claiming that he and Subject B "were just messing around." A survey of video footage of the incident proved otherwise, with both suspects escalating into aggression and then grabbing and wrestling with each other, with suspect B throwing a missed punch toward A. No charges were filed by Suspect B, but Suspect A wrote a supplement to the report. Both parties were released at the scene and were advised not to initiate any further aggression. Both subjects agreed and went their separate ways.

CLUB MEETINGS

Unless otherwise noted, all meetings take place in the Student Activities Center in the Lower Waterman, VisTaTech Center

Monday

Schoolcraft Connection Staff Meeting
Conference Rm. E
4 to 5 p.m.

Phi Theta Kappa Honor Society
Conference Rm. D
Nov. 11 at 4 p.m. to 5 p.m.

Safe Place
Conference Rm. C
5:15 to 6:15 p.m.

Tuesday

Business Club
Conference Rm. E
10:30 to 11:30 a.m. on the first and third Tuesday of every month

Christian Challenge
Conference Rm. D
12 to 1:30 p.m.

Student Activities Board
Conference Rm. C
1 to 2 p.m.

Mountain Movers
Conference Rm. D
2 to 3 p.m.

Project Playhem
Conference Rm. E
2 to 3 p.m.

Weight Lifting Club
Fitness Center
2 to 3 p.m.

Wednesday

Video Production Club
Conference Rm. C
12 to 1 p.m.

Math and Physics Club
Every other Wednesday at 3 to 4:30 p.m.
Rm. 160, Biomedical Technology Center

Student Activities Board
Conference Rm. C
4 to 5 p.m.

Thursday

Public Expressions Workshop Club
Conference Rm. C
2:30 to 4 p.m.

NAEYC Study Tables
Rm. 240, Liberal Arts
Oct. 11 at 11 a.m. to 12 p.m.

The Search
Conference Rm. E
12:30 p.m. to 2 p.m.

Friday

CGT Club
Rm. 110, Jeffress Center
1 to 3 p.m.

Saturday

Otaku Anime Club
Student Activities Center
Oct. 27 at 5 to 10 p.m.

**IF YOU NOTICE ANY SUSPICIOUS
ACTIVITY ON CAMPUS, CONTACT
CAMPUS POLICE AT 734-462-4424.**



**AMERICAN HARVEST
BREW PUB**

The American Harvest Brewpub offers award winning, student made beer to the public.

10 different taps • Sample Flights • Pints
Cans • Bottles • Howlers • Growlers

CHECK US OUT ON-LINE!
www.schoolcraft.edu/brewpub/american-harvest-brewpub
www.facebook.com/AmericanHarvestBrewpub
AmericanHarvestBrew@schoolcraft.edu



THINK/A TRIBUTE TO THE QUEEN OF SOUL, ARETHA FRANKLIN

Charles H. Wright Museum of African American History

315 E Warren Ave, Detroit, Mich.

Now to Jan 21, 2019

Tue. to Sat. 9 a.m. to 5 p.m. Sun. 1 p.m. to 5 p.m.

Dig Deeper into the life of the queen of soul, Aretha Franklin and the city she called home. Travel through an exhibit filled with monumental achievements, that set the bar, for not only today's artists but future artists as well.

OUR TOWN ART SHOW

The Community House

380 S. Bates, Birmingham, Mich.

Nov. 2 to 3

10 a.m. to 8 p.m.

The Community House presents their 33rd annual Our Town Art show and sale. A show that is media and juried based, filled with over 375 pieces of art from more than 150 Michigan artists. This event provides a forum for artists to display and sell their work. Paintings, sculptures, glasswork, jewelry, and more will all be available for purchase. A percentage of proceeds from this event will benefit The Community House and their programs and services.

DIVINE CHILD HOLIDAY BOUTIQUE

Divine Child Elementary School
25001 Herbert Weier Drive, Dearborn, Mich.

Nov. 3

9 a.m. to 4 p.m.

313-562-1090

Admission Fees: \$3

Start your holiday shopping off right! Come to Divine Child Elementary School

for the 42nd Annual Shopping Boutique. More than 100 crafters and artisans will be in attendance, selling a collective mix of fine arts and hobby crafts. This collection will feature a mix of home decor, hand-made accessories, woodworked toys, paper goods and hand sewn quilted items. Attendees will be able to enter raffles and enjoy a bake sell filled with homemade goods.

AVANT GARDE HAIR SHOW

Zuccaro's Banquet Center

46601 Gratiot Ave, Chesterfield, Mich. 48051

Nov. 4

3 p.m.

586-604-3037

Admission Fee: \$55 each, or \$450 for a table of 10

A Beautiful Me is hosting the eighth annual extreme artistic hair show and FUNdraiser. A red-carpet event that showcases extreme and unique hair creations, designed by Michigan hair stylists. Each hairstyle will be showcased through "everyday" women models walking a runway.

Models will range differently in age, weight, ethnicity, and exuding confidence. All proceeds from this family-friendly event provide local third through 12th-grade girls the opportunity to attend A Beautiful Me's original and interactive self-esteem workshops.

HOLLYWOOD NIGHTS- 24 HOUR MOVIE MARATHON

Imagine Theatre Novi

44425 W. 12 Mile Road, Novi, Mich.

Nov. 9 to 10

10:00 a.m.

248-530-3002

Imagine Theatre and Children's Leukemia Foundation (CLF) of Michigan are hosting their 19th annual Hollywood Nights 24-hour movie marathon. This

fundraising event is for all film enthusiasts and supporters of CLF. Enjoy a great movie while raising money and awareness of leukemia for children and adults.

PVMF ANNUAL GALA: PLAY BALL

The Henry Ford

20900 Oakwood Blvd, Dearborn, Mich. 48124

Nov. 8

7 p.m.

Admission/Fee: \$300

The Presbyterian Villages of Michigan Foundation will be hosting their 15th annual, gala event. Come "Play Ball" at the Henry Ford. Enjoy stadium-themed food, fabulous sports cocktails, and popcorn while taking in and enjoying the Jazzy sounds of The Sugar Snaps. Attending this benefit for the 5,000-plus older adults served by PVM, you'll help make Michigan the best place to live at any age.

MARIJUANA: IS IT REALLY A BIG DEAL?

Nov. 5, 8 to 9 a.m., 5 to 6 p.m.

Livonia Chamber of Commerce

33300 Five Mile Ste 212

Call 734-338-9580 for more information

Free and open to the public

Livonia Save our Youth invites community members to an information session and discussion.

Attendees will discuss the upcoming ballot proposal in depth and the possible effects it could bring. No registration or reservations are required.

OFRENDAS: CELEBRATING EL DIA DE LOS MUERTOS

Detroit Institute of Arts

5200 Woodward Ave, Detroit, MI 48202

Now until Nov. 11

Admission: Free (if Wayne County Resident)

The Detroit Institute of Arts is partnering with Detroit's Mexican Consulate in celebration of the Day of the Dead. The gallery will showcase a major part of the celebration of El Dia de los Muertos, which is the ofrenda altar. Ofrendas are collections of objects placed on the ritual altar for the person who has passed.

The gallery is free with regular muse-

um admission and open during regular museum hours, which vary depending on the day. For more information, contact 313-833-7900.

VETERANS DAY PARADE

Downtown Detroit

Nov. 11 at 8 a.m. to 3 p.m.

313-936-0760

The Metropolitan Detroit Veterans Coalition is slated to hold its annual Veterans Day Parade on Nov. 11. This year marks the 100th anniversary of the end of World War I, and the beginning of Veterans Day. This year, the Metropolitan Detroit Veterans Coalition will have 12 participants taking part in the parade. Among those participants are 338th Army Band, AL 18th District, AL Coleman A. Young Post 202, American Indian Movement of Michigan, Angela Hospice, Compassus, DAV Keane-Ranklin Metro Detroit Chapter 1, Detroit Red Tail Inc., Macon-Thomas Chapter of Tuskegee Airmen Inc., Southfield HS for the Arts and Technology Marching Warriors, US Coast Guard Veteran Benjamin LaPaugh and Wayne State Student Veterans Org.

COMEDY DOGSTRAVAGANZA

50265 Van Dyke Shelby Twp, Mich.

Nov. 16, 7 to 11 p.m.

Admission/Fee: \$75

248-930-7853

Enjoy a fully catered dinner and open bar while with entertainment from professional comedians to raise funds for the Humane Society of Macomb. Adoptable animals will be present for attendees to meet and take home. The Macomb humane society is a no-kill shelter. There will also be a silent auction from local businesses.

67TH ANNUAL JEWISH BOOK FAIR

6600 W. Maple Rd. ,West Bloomfield, Mich. 48322

Nov. 3 until Nov. 14

248-661-100

The Metro Detroit Jewish Book fair is one of the largest in the country. Book fair hours vary by day, and each day has a specific program to showcase a variety of books. The program includes the times for each author to discuss their book. Every year there are thousands of attendees of the book fair.

To find more information about the Book Fair, visit bookfairjccdet.org.

COLLEGE VISITS

DATES AND TIMES ARE SUBJECT TO CHANGE.

Students interested in transferring can meet with representatives or advisors from the following universities to answer any general questions and schedule advising appointments.



Eastern Michigan University
Liberal Arts
Oct. 30 at 10 a.m. to 2 p.m.
734-462-4426



University of Michigan- Flint
Biomedical Technology Center
Oct. 30 at 11 a.m. to 2 p.m.
734-462-4426



Advising with Wayne State University
McDowell Center, MC175
Nov. 1 at 9 a.m. to 3 p.m.
734-462-4429



Lawrence Technological University
Biomedical Technology Center
Nov. 1 at 10 a.m. to 1 p.m.
734-462-4426



Northwood University
Applied Sciences
Nov. 5 at 10 a.m. to 1 p.m., 4 to 6 p.m.
734-462-4426



Western Michigan University
Henry's Food Court, VisTaTech Center
Nov. 5 at 10 a.m. to 2 p.m.
734-462-4426



Advising with Western Michigan University
McDowell Center, MC175
Nov. 5 at 2 p.m. to 4 p.m.
734-462-4429



Concordia University Ann Arbor
Biomedical Technology Center
Nov. 6 at 12 to 3 p.m.
734-462-4426



Advising with University of Michigan, Col-
lege of Liberal Arts and Sciences
McDowell Center, MC175
Nov. 6 at 12 to 5 p.m.
734-462-4429



Advising with Eastern Michigan University
McDowell Center, MC175
Nov. 7 at 9 a.m. to 4 p.m.
734-462-4429



Advising with University of Michigan-Flint
(APPOINTMENT ONLY)
McDowell Center, MC175
Nov. 7 at 9 a.m. to 3 p.m.
734-462-4429



Northwood University
Henry's Food Court, VisTaTech Center
Nov. 7 at 10 a.m. to 1 p.m.
734-462-4426



Walsh College
Applied Science
Nov. 8 at 9:30 a.m. to 1:30 p.m.
734-462-4426



Advising with Lawrence Technological
University
McDowell Center, MC175
Nov. 8 at 10 a.m. to 3 p.m.
734-462-4429



(WOW) Walk Over to Wayne
Nov. 13 at 5 to 7 p.m.
Rm 310 of the Jeffress Center
734-853-3450

CAMPUS & CLUB EVENTS

ALL EVENTS ARE FREE AND OPEN TO THE PUBLIC UNLESS OTHERWISE NOTED.

DONATE TO BLESSINGS IN A BACKPACK

Now until Nov. 15

Student Activities Office, Lower Waterman Wing

Help solve the problem of childhood hunger in Livonia Public Schools by donating non-perishable food items. Items include canned soup, granola bars, canned fruit and vegetables, crackers, and more. Bring all donations to the Student Activities Office, Lower Level, or contact 734-462-4421 for items to be picked up.

TOPGOLF ON CAMPUS RECRUITING

Oct. 30 at 11 a.m. to 1 p.m.

Henry's Food Court in VisTaTech Center

Representatives from Topgolf will be on hand to discuss job and career opportunities and accept resumes from interested applicants. This event is open to the public. Dress business casual and bring copies of resumes.

For more information, contact the Career Services Office at 734-462-4421 or careerservices@schoolcraft.edu.

BAIS PHLEBOTOMY SERVICES ON CAMPUS RECRUITING

Oct. 30 at 11 a.m. to 1 p.m.

Henry's, Waterman Wing, VisTaTech Center

Representatives from Bais Phlebotomy Services, LLC will be on hand to accept resumes and talk with job seekers about positions with the company. This event is open to the public. Bring resumes and dress business casual.

For more information, contact the Career Services Office at 734-462-4421 or careerservices@schoolcraft.edu.

INTERNATIONAL LEARNING SUPPORT HALLOWEEN CELEBRATION

Oct. 31 at 10 a.m. to 4 p.m.

Bradner Library Rm. L110

This year, International Learning Support Services will be hosting a traditional American Halloween celebration for Schoolcraft international students. We will have apple cider and cinnamon donuts in the morning, readings of classic scary stories in the afternoon, trick-or-treating in the evening, and much more through-

out the day. Feel free to come dressed in school appropriate costumes. Contact Hollie Reynolds by email at hreynold@schoolcraft.edu or by phone at 734-462-7359 for more information.

DÍA DE LOS MUERTOS GHOST SUPPER

Oct. 31 at 1 p.m. to 2:20 p.m.

Liberal Arts Rm. 475

Join the Native American Club and Professors Ditouras, Schaumann, and Roney-Hays for a movie showing of "Food for the Ancestors", an exploration of the history and cuisine surrounding the Days of the Dead, Mexican traditions and ancient ways of life. Bring a dish to pass and a photo to display.

BED BATH & BEYOND ON CAMPUS RECRUITING

Nov. 1 at 11 a.m. to 1 p.m.

Henry's Food Court in VisTaTech Center

Recruiters from Bed Bath and Beyond in Northville will be on hand to discuss job and career opportunities and accept resumes from interested applicants. Dress business casual and bring copies of resumes. For more information, contact the Career Services Office at 734-462-4421 or careerservices@schoolcraft.edu.

PLYMOUTH FAMILY YMCA ON CAMPUS RECRUITING

Nov. 1 at 11 a.m. to 1 p.m.

Henry's Food Court in VisTaTech Center

Recruiters from the Plymouth Family YMCA will be on hand to discuss job and career opportunities and accept resumes from interested applicants. This event is open to the public. Dress business casual and bring copies of resumes. For more information, contact the Career Services Office at 734-462-4421 or careerservices@schoolcraft.edu.

FOCUS SERIES: LITTLE DRESSES FOR AFRICA

Nov. 1 at 12 to 1 p.m.

Forum Building, Room F530

Join Rachel O'Neill, founder of Little Dresses for Africa Founded (2008), a registered non-profit 501c3 Christian organization established to provide relief to vulnerable children throughout the Continent of Africa and beyond. The purpose of the ministry is to send hope

to the most vulnerable of God's children: little girls.

Contact Helen Ditouras through email at hditoura@schoolcraft.edu or by phone at 734-462-7263 for more info.

GAME AND EDUCATIONAL GAMIFICATION RESOURCES

Nov. 1 at 2 to 3 p.m.

Bradner Library, Room L105

In conjunction with International Games and Gaming week (Nov. 4- 10) for a discussion of gaming resources. A wide variety of educational gaming resources will be shared. This Bradner library workshop is designed for Schoolcraft College students, faculty and staff. CEU's will be available.

Contact Joseph Miller by email jmiller@schoolcraft.edu or by phone at 734-462-7674 for more info.

ANIME NIGHT

Bradner Library, Rm L110

Every Wednesday and Thursday from 4:15 to 6 p.m.

The library will be holding Anime Nights throughout the Fall semester on Wednesday and Thursday nights from 4:15 p.m. to 6 p.m. in room L110. Meet fellow fans, watch anime, and have fun. You choose what anime we watch.

Contact Joseph Miller by email jmiller@schoolcraft.edu or by phone at 734-462-7674 for more info.

TEAM SBA FINANCING ROUNDTABLES

Nov. 2 at 9 a.m. to 12 p.m.

Jeffress Center, Room 102 (Use Southeast entrance)

Before you apply for a business loan, first attend a free financing roundtable. We will debunk the myths and demystify the process of small business financing. The roundtables are best suited for those who have good credit, a solid business idea, and some money to invest in the business. Free and open to the public. Registration is now open. Prior registration with the MI-SBDC is required before attending.

Call 734-462-4438 for more information.

THEATRE DINNER AND PERFORMANCES "A DOLL'S HOUSE"

Dinner and Performance on Nov. 2 and Nov. 3 at 6:30 to 10 p.m., Other

Performance Dates

Dinner at DiPonio Room, VisTaTech Center, Rm. 500

Performance at James R. Hartman Theater, Liberal Arts Building, Rm. LA500

In the college's first production of "A Doll's House", a modern setting showcases the timeless issues of dominance and equality that emerge in the Helmer household as Nora loses control of a risky secret which saved her husband's life and threatens her own well-being.

The showing on Nov. 2 includes a dinner theatre performance. Dinner will be held in the DiPonio Room at Vista Tech Center at 6:30 p.m., followed by the performance in the James R. Hartman Theatre (LA500) at 8 p.m.

Dinner Theatre tickets are \$30 and performance only tickets are \$15; tickets may be purchased at the Schoolcraft College Cashier (McDowell Center) or by calling 734-462-4596.

SOUNDS OF AUTUMN CONCERT

Nov. 3 at 7 to 8 p.m.

Forum Rm. F530

The 'Sounds of Autumn' Concert features the Schoolcraft Collegiate Choral under the direction of Dr. Jonathan Drake in a program featuring a wide variety of repertoire.

The presentation will include works from the Renaissance and compositions by Schubert along with traditional spirituals, folk songs and a musical tribute to World War I and the Armistice in 1918. For more info, contact Patricia Minnick by email at music@schoolcraft.edu or by phone at 734-462-4403.

VOTER EDUCATION ON ISSUES AND CANDIDATES - STUDENT CIVIC ENGAGEMENT RESEARCH

Nov. 5 at 11 a.m. to 12:15 p.m.

Lower Waterman Wing, VisTaTech Center

Come learn more about the candidates for governor, ballot proposals on legalizing recreational marijuana, the Schoolcraft College millage, fiscal policy, and protecting Michigan waters.

For more information, contact Student Activities Office at sc.sao@apps.schoolcraft.edu or call at 734-462-4422.

DIVORCE SOLUTION ESSENTIALS - MONEY MATTERS IN DIVORCE**Nov. 5 at 4 to 6 p.m.****McDowell Student Center Rm. MC119**

"Money Matters in Divorce" provides an opportunity to speak with a certified divorce financial analyst about the financial concerns relative to divorce. All sessions are facilitated by Vicki D. McLellan, a certified divorce financial analyst from Equitable Divorce Resolutions in Royal Oak.

For more information, contact the Hinkle Center at 734-462-4443 or email hinklecenter@schoolcraft.edu.

STARTING A BUSINESS**Nov. 6 at 9:30 a.m. to 12:30 p.m.****Jeffress Center, Room 122 (Use Southeast entrance)**

Are you considering self-employment, or in the beginning stages of starting a business? Delivered in a workshop format, this introductory session will help you assess your ability to lead and manage a company, as well as evaluate the market and sales potential for your products. Discover resources available to help launch new ventures in Michigan.

Fee: \$35.00. Registration is now open. Registration is a two-step process. Contact the SBDC at 734-462-4438 for more info.

ENTREPRENEUR SERIES**Nov. 6 at 9:30 a.m.****Jeffress Center, Room 122 (Use Southeast entrance)**

Our Entrepreneur Series is designed to provide entrepreneurs the education and tools to launch a successful small business. To qualify for a Small Business

Entrepreneur Certificate, participants must successfully complete all five courses in the Entrepreneur Series: Starting a Business, Writing a Business Plan, Marketing Your Business, Business Legal Issues, and Financial Management. Series runs 11/6/18 - 12/4/18.

Fee: \$200.00. Registration is now open. Registration is a two-step process. Contact 734-462-4438 for more info.

NO PLACE LIKE HOME HEALTH ON CAMPUS RECRUITING**Nov. 7 at 11 a.m. to 1 p.m.****Henry's Food Court in VisTaTech Center**

Recruiters from No Place Like Home Health will be on hand to discuss job and career opportunities and accept resumes from interested applicants. This event is open to the public. Dress business casual and bring copies of resumes. For more information, contact the Career Services Office at 734-462-4421 or careerservices@schoolcraft.edu.

WEDNESDAY NOON JAZZ CONCERT, MARCUS ELLIOT QUARTET**Nov. 7 12 to 1 p.m.****Kehrl Auditorium, VisTaTech Center**

Performer Marcus Elliot is a saxophonist, composer, improviser, and educator based in Detroit, Michigan. His compositions and improvisations have been described by the New York Times as "convincing and confident, evolved in touch and tone...", and the Detroit Free Press has said, "Marcus Elliot represents next generation of jazz".

Contact Patricia Minnick by email at

music@schoolcraft.edu or by phone at 734-462-4403 for more information.

CONSULTANT'S CORNER Liberal Arts on Nov. 7 and in Applied Sciences Nov. 8

The Writing Support Studio welcomes students to stop by our pop up writing stop, Consultant's Corner, for free writing consultations. Our Peer Consultants will be available in the lobby of Liberal Arts to answer writing-related questions, provide on-location writing consultations, and offer more information about our services. Stop by and say hi, ask us a question about writing, and talk with us about our services.

For more info, contact Stephanie Reynolds by email: sreynold@schoolcraft.edu or by calling 734-462-7612.

CORNHUSK DOLL WORKSHOP**Nov. 7 from 4 p.m. to 5 p.m.****Liberal Arts, Room 130**

Come make your very own cornhusk doll. Materials are provided, but feel free to bring additional items you'd like to use. Led by Chelsea Bridges, member of the Sault Ste. Marie Band of Chippewa Indians and Historical Presenter at The Henry Ford. Sponsored by the Native American Club and Student Activities Office.

GOVERNMENT CONTRACTING 101**Nov. 8 at 9 a.m. to 12 p.m.****Jeffress Center, Rm. JC123**

What does it take to become a successful government contractor? What services and resources are available to a small business pursuing the government

market? Find out what it takes to sell your goods and services to the federal government and the State of Michigan. In addition, learn about the services and continuous support the Procurement Technical Assistance Center (PTAC) has available to help your company with the contracting process.

Fee is \$45. Access WebAdvisor to register. Contact Kara or Shannon VIA email at ptac@schoolcraft.edu or by phone at 734-462-4438 for more info.

DISCOVERING GRAPHIC NOVELS**Nov. 8 at 2 to 3 p.m.****Bradner Library, Rm. L105**

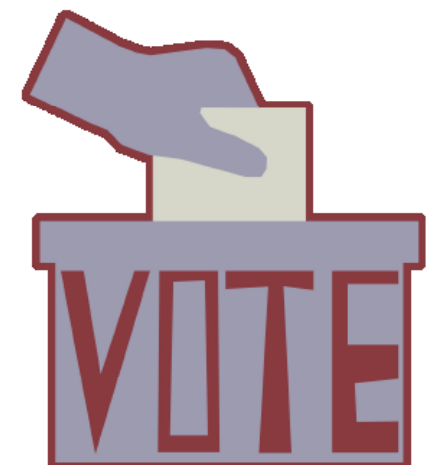
A wide variety of resources relating to graphic Novels will be shared and discussed with an emphasis on books and related web resources. This Bradner library workshop is designed for Schoolcraft College students, faculty and staff. CEU's will be available.

Contact Joseph Miller by email jmiller@schoolcraft.edu or by phone at 734-462-7674 for more info.

SCHOOLCRAFT WIND ENSEMBLE AT MONROE COMMUNITY COLLEGE**Nov. 11, 10 - 11 a.m.****Monroe Community College, Meyer Theatre, 1555 S. Raisinville Road, Monroe, MI**

Schoolcraft Wind Ensemble at Monroe Community College

"A Veteran's Day Celebration", provided by Schoolcraft's own Wind Ensemble. Email pmichals@schoolcraft.edu, call at 734-462-4403, or visit <http://schoolcraft.edu/music> for more info.

*November 6 is a big day....**Don't forget to*

Did you know **Midterms** are more
important than Presidential elections?

VOTE

TUESDAY, NOVEMBER 6

**Problems voting? Call the Election Protection
Hotline at (866) OUR-VOTE • (866) 687-8683**



VOTE.ORG