



Former Schoolcraft hockey player faces the battle of his life

Former assistant captain for Ocelots Hockey, Jacob Stanley, back when he was on the ice. To support Stanley, go to [gofundme.com/f/stanley-strong-support](https://www.gofundme.com/f/stanley-strong-support).

JOSIAH THOMAS
News Editor

Just a few years ago Jacob Stanley, was your typical college student athlete playing the game he loved while attending college. He put his heart and soul into every shift and assisted his teammates in every way he could, whether scoring goals, assists or the occasional

dropping of the gloves as the former Schoolcraft Men's Hockey alternate captain. Now Stanley is looking for some assists of his own off the ice, as the 23-year-old was recently diagnosed with Stage 4 Hodgkin's Lymphoma this past summer.

Stanley went to the doctors because he felt a strange lump on his neck and it turned out to be cancer that spread to his

lymph nodes throughout his body.

"He was a real and energetic hockey player, he could score goals and he had great leadership skills in the locker room and off the ice," said Schoolcraft Men's Hockey general manager, Rob Lindsay regarding Stanley.

"Stanley" Page 4 >

Up, up and away!



Photo courtesy of Schoolcraft College

From left to right: Kevin Bak, Mustapha Baltaji, Jayson Fitzpatrick and Joseph Choma all stand holding the Schoolcraft Alka-Rocket team banner. The Alka-Rocket team have stayed dedicated on this project since February this year.

Alka-Rocket team to compete in Orlando

CHRISTIAN HOLLIS
Managing Editor

The Alka-Rocket team at Schoolcraft College qualified to compete for \$30,000 at the Kennedy Space Center in Orlando, Fla. The competition will take place Dec. 12. The Alka-Rocket team is competing against four other schools around the country to see who can build a launcher to fire a projectile using water and Alka-Seltzer tablets. The winner is determined by who's launcher goes the highest in the air and the creativity of the design. On top of a \$30,000 prize, the winner will also be featured in the Guinness World Records.

"Rocket" Page 4 >

SERVING UP A SIDE OF SMILES P6

WE PREDICT THE NEW SMASH BROS DLC P12

CHRISTIAN HOLLIS SAYS GOODBYE P24

TRY THE NEWEST WORD SCRAMBLE P30

NEWS

Synergetic, sustainable and growing

Skilled trades and manufacturing programs move, expand at new location



Photo by Clarisa Russenberger, Photo Editor

The new Manufacturing and Engineering Center is a 48,000 sq. ft. warehouse located adjacent to the Public Safety Training Complex, currently under renovation to fit the needs of the College.

JOSIAH THOMAS
News Editor

Schoolcraft College is determined to see students succeed through education, certification and job training. One of the ways they are meeting these goals is with the best facilities possible; good facilities enhance programs and the student experience, something Schoolcraft College is fully aware of.

The new Manufacturing and Engineering Center is set to achieve Schoolcraft's goal of getting students ready for the real world of skilled trades and manufacturing. Schoolcraft's Chief Financial Officer, Dr. Glenn Cerny, has worked closely with instructional operations and Schoolcraft President Dr. Conway Jeffress to ensure that Schoolcraft defines what's needed for students and faculty in the next decade.

The building is a 48,000 sq. ft. warehouse located adjacent to the

Public Safety Training Complex, currently under renovation to fit the needs of the college. Work began October and its estimated completion is summer 2020.

This is part of Schoolcraft's plan for synergy: development that coordinates and combines resources to achieve a desired goal. Moving existing programs in skilled trades, manufacturing programs and their operations from the north end of Applied Sciences (AS) to the new facility is the next step.

The MEC is a landmark project both for the college and the community.

"We felt that the Manufacturing and Engineering Center being an industrial complex makes a lot of sense," said Cerny. "Not only does it allow easy access for the students to come and go, but our (business) partners are right next door."

Currently, local businesses are partnering with Schoolcraft to have their employees trained at

Applied Sciences for training and certificates. The MEC will provide more space and resources to expand and improve the programs with. It'll also more accurately replicate current practices in skilled trades.

One example is the plastics technology program.

A machine worth \$250,000 was donated to Schoolcraft, but the college can't use it currently due to a lack of space. Welding doesn't have enough space right now either and it's problematic for professor Coley McClain and the welding students because they want to meet demand in the field.

With the new MEC, problems like those will be alleviated.

The best computer labs, tools, equipment and facilities will be available, with more than enough space. Welding will get a "FAB lab": a large room at the MEC that'll double the number of booths for students to work in. Also, Professor

Gene Keyes' area will have a classroom within the lab and another classroom just outside.

Applied Sciences, meanwhile, will be renamed "Health Sciences" in order to focus on healthcare and nursing, grow existing programs in these fields, add Radiology and Surgical Technologist programs as part of the 36,700 sq. ft. addition to that building.

Schoolcraft's faculty has been deeply involved in setting up the programs. College administrators have worked with them to make sure they've got what they need, taking that information, working with the architects and construction managers to put all the meetings needed into a program that can be developed, designed, built and then implemented.

Of these developments and new opportunities, Cerny said that Professors Keyes and McClain are "ecstatic; they can't wait for the students to come to class next fall."

Un-News-ual News

JOSIAH THOMAS
News Editor

Academic Advice from Phil De Graves

Radboud University in the Netherlands offers students an opportunity to lie in a mock grave to cope with exam stress. According to a report by the Mirror, the founder of this exercise wants students to make students “appreciate

their time on this earth a little more.” According to university students, this strange program has become so popular that a waiting list is in place to secure an early grave.

Canadian Man moves out... in a canoe

A teacher recently moved from his old home in Whitby, Ontario to Canada’s capital of Ottawa for a summer job. The teacher, John Konecny, accomplished this by

packing all of the belongings he needed in a fiberglass canoe and set out in 2018 with his cargo, a paddle and a repurposed weed wacker used for extra propulsion, only recently completing this trip after a trek of nearly 250 miles.

This was done after failing to win a tax court case to cover his moving expenses, piling on thousands more in legal fees. Wanting to get around this problem, the judge from the tax court asked if he could move away using a canoe. Konecny replied that he could.

Upside-Down Christmas Trees

Whether to save floor space or to celebrate Christmas differently, an increasing number of people this year are opting for an upside-down approach to tree-trimming. This is done by inserting their Christmas trees upside-down into their Christmas tree stands, with an insert specially designed to hold the tree in place. According to a separate report by the Sun, as this trend has become more popular, more stores are selling upside-down trees, with prices ranging from \$25 to hundreds of dollars.

News Briefs

JOSIAH THOMAS
News Editor

LOCAL

Zoomer entrepreneurs open shop in Twelve Oaks Mall

Young businessmen Cody Wallace (21) and Noah Cannon (20) have opened up a new tea shop in the former Teavana store at Twelve Oaks Mall on 27500 Novi Road. The new shop is called “Taste of Tea,” which boasts a diverse selection of teas, ranging from black tea to herbal to white teas.

In addition to selling loose tea, the shop also carries many different accessories such as infusers and other items to enjoy a cup of tea on a cold winter’s morning.

In contrast to the series of closures experienced by some coffee and tea chains across the country, such as Starbucks and Teavana, Wallace and Cannon both said they’ve gotten a lot of attention over their new “Taste of Tea” opening. They argue that having a physical store affords advantages that online stores don’t have. “Starting off online, coming

in is a whole other experience for the customer,” Cannon said in a report to the Novi News. “You come in and get an experience. You smell the tea, you taste the tea.”

STATE

“Big House” real estate

The State of Michigan, as well as developers and investors, are seeking solutions to the 4 million total square feet of land left behind by decarceration and prison closures. They may have them by finding new uses for the old complexes, such as for material reuse, environmental remediation, vocational training, new taxable value and jobs. Benefits of these are also measured against the relative remoteness of the locations and zoning issues, on top of large requirements of time, money and cooperation needed to make it worth the effort.

NATION

Suspicionless searches of travelers’ phones and laptops ruled unconstitutional

A federal court in Boston ruled that the government’s asserted authority to search and seize

the devices for purposes other than enforcing immigrations and customs laws has come to an end. This ruling comes in the lawsuit title “Alsaad v. McAleenan,” filed by the ACLU, the Electronic Frontier Foundation (EFF) and

the ACLU of Massachusetts. According to the ACLU’s website, this was done “on behalf of 11 travelers whose smartphones and laptops were searched without individualized suspicion at U.S. ports of entry.”



FREE STUDENT ACCOUNTS
Your Money Moves with You.

Access to your money now & into the future

- No minimum balance requirements
- No monthly account fees
- Free Mobile Banking, eBanking & eStatements

Open your account today!



CFCU.ORG | 877.937.2328

Federally insured by NCUA. ©2018 Community Financial



Photo courtesy of Schoolcraft College

The Schoolcraft Hockey Team honors Stanley as they wear ribbons on the back of their helmets.

STANLEY

Continued from Page 1

“He was a real and energetic hockey player, he could score goals and he had great leadership skills in the locker room and off the ice,” said Schoolcraft Men’s Hockey general manager, Rob Lindsay regarding Stanley.

To assist with Stanley’s medical bills a GoFundMe page was setup by his family and donations are being accepted on an ongoing basis. Currently \$5,466 has been raised of the \$10,000 goal according to the GoFundMe page.

Before his diagnosis, Jacob was studying in the Criminal Justice program to become a police officer and now he’s fighting for his life: the biggest challenge here is funding and the hope here is for raising funds for hospital co-pays and cancer treatments.

Cancer does not discriminate, affecting even strong healthy adults like Stanley.

When the current Ocelots team was informed recently by Lindsay of the news about Stanley, their reaction was described as “total silence”, enough to hear a pin drop.

Though Jacob left the team two years ago, the current team is pulling for his success and taking part in the fundraiser.

When asked why he is passionate about helping Stanley, Lindsay answered, “Jacob worked hard for our team and he’s a good kid...of course, you’re going to work hard for somebody that you know. He was very close to the team at all and the coaches. When you see somebody get sick, you do everything you can to help that person.”

Spreading awareness of his cause and the fundraiser is the best possible way to help. Many have chipped in already, including SC’s Hockey Team and Mitten Sports shop out in Farmington Hills, the latter of which donates a percentage of the team’s spirit gear sales toward the fundraiser to pay for Jacob’s co-pays and cancer treatments.

Those interested in helping Jacob Stanley’s fight for his life to defeat cancer can donate for “Jacob’s battle with cancer” at gofundme.com/f/stanley-strong-support. Every little bit helps.

ROCKET

Continued from Page 1

The team consists of four Engineering students from the Math and Physics Club: Mustapha Baltaji, Jayson Fitzpatrick, Joseph Coma and Kevin Bak. The team has been working on this project since February. They have worked on it during weekends and breaks to stay on top of the project. Professors Mike McCoy and Randy Schwartz advise the Math and Physics Club and they provided the club’s meeting space to the team.

“After nights of hard work and experimenting and building the projectile all over again, we were able to achieve what we are looking for,” said team leader and Marine Engineering major Mustapha Baltaji.

The Bayer is a pharmaceutical company and they sponsor the competition under its Making Science Make Sense program. Their goal with the program is to attract more young people into STEM projects.

Bayer required each team to form a video on their process. Baltaji approached Schoolcraft’s Media Department to record the video. Atticus Laird, a student employee at the Media Department was assigned to record and edit the video. Once the video was edited, the team had to get more likes on Facebook than the top six other competitors.

The project was funded by the Student Activities Office. Director of Student Activities, Todd Stowell worked directly with Baltaji on getting everything they needed and utilizing resources on campus. The team took advantage of Schoolcraft’s Stratasys F270 3-D printer in the CAD Lab, thanks to professor Steven Rocho, to craft the five rockets. They made over a dozen versions of the projectile, all of which were successful. Fitzpatrick stayed on top of the Rocket Design.

Choma led the team in the chemistry area. Professor Michael Waldyke allowed Choma and the rest of the team to use the chemistry lab

for the project. Choma discovered a way to reduce carbon dioxide gas from dissolving in the water of the rocket before launch. This overall increased the success rate of the launch.

Bak led the way in the design of the launcher. The launcher is made of high-grade PVC pipe wrapped in carbon fiber. The team is also working with the welding department on creating a launch stand for the upcoming competition.

“What they’re doing is truly inspirational,” said Physics professor Christopher Wood, who provided access to the team to the physics lab for simulations. “If I didn’t know otherwise, I’d guess they are senior-level students at a prestigious 4-year engineering school.”

If the students win, they will split the prize between the four of them.

Nonetheless, the fact that Schoolcraft’s Alka-Rocket team made it this far is impressive and should be applauded. The Alka-Rocket team would like to formally thank the following students for their support and assistance: Jacob Delis, Klea Hoxhallari, Anthony Marcum, Iris Do, Halle Mancuso and Steven Bak.

For more information on the Alka-Rocket team, call the Student Activities Office 734-462-4422.

EXAM -a- RAMA

Learning Center's

FINAL EXAM REVIEW

Reviews in: Math, Biology, Physics, Chemistry, Writing & MORE
All Packet Review Sessions offered in-person and via live-webinar!
For a link to attend online, visit the Exam-a-Rama webpage.

| | |
|----------------------------|---------------------|
| Thursday, December 5, 2019 | 8 PM until Midnight |
| Friday, December 6, 2019 | Noon until 4 PM |
| Saturday, December 7, 2019 | Noon until 4 PM |

For subject availability, please visit the Learning Center
Broader Library—1119 or www.schoolcraft.edu/exam-a-rama

For more information on Exam-A-Rama, see page 7.

Interested in Writing, Photography, Video/Multimedia?

WE ARE HIRING

**SCHOOLCRAFT
CONNECTI**


● EXPERIENCE PREFERRED BUT NOT NECESSARY



Join the
**AWARD -
WINNING**
student
newspaper

 @ConnectionSAO

 /schoolcraftconnection/

 @SchoolcraftConnection

 schoolcraftconnection.com

 **Schoolcraft
College**

 **STUDENT
ACTIVITIES
OFFICE**

STAFF MEETINGS

Every Monday from 4 - 5 p.m.
Conference Room E
Lower Waterman, VisTaTech

For more information
contact the Student Activities Office at
734-462-4422

Henry's Food Court



December 2nd – 6th Special
Breakfast Pizza
Small Tropicana Orange or Apple Juice
\$3.25
(Valid during breakfast service 7:30 a.m. –
10:30 a.m.)



December 9th – 13th Special
Sloppy Joe
Potato Chips
Small Fountain Drink
\$6.25



December 16th – 20th Special
Any Cold Deli Sandwich
Potato Chips
Small Fountain Drink
\$6.25

 **Schoolcraft
College**

Located in the VisTaTech Center, 734-462-5903

Possible is everything.

Whether you study architecture, business, engineering, or dozens of other fields at **Lawrence Tech**, you'll get an innovative, hands-on education to prepare you for the career of your dreams.

Why do students choose LTU? **ltu.edu/studentstories**

5th

in nation for boosting
graduates' earning
potential

11:1

student/faculty ratio

86%

students employed
or registered for
graduate school at
commencement

100+

career events on
campus each year

ltu.edu/applyfree

Lawrence Technological University®

Architecture and Design | Arts and Sciences | Business and Information Technology | Engineering

Southfield, Michigan



Serving with spirit and skill



Photo courtesy of trzarcak.com

President Barack Obama and First Lady Michelle Obama's holiday vacation to Hawaii while in office. They were accompanied by a culinary and hospitality team. Chef Derrick is pictured in the back row, first from the left.

Serving with spirit and skill

MADISON LING
Campus Life Editor

From fixing a feast in his family kitchen to serving with and for his fellow soldiers, alumnus and Master Chief Petty Officer of the Navy, Derrick Davenport, set sail for success and in turn, has extended his horizons beyond the lighthouse that guided his culinary career, Schoolcraft College.

"For me, it all started at home with my father," said Davenport. "I loved to spend time with him, cooking and entertaining anyone that came over."

Once Davenport discovered his passion and knew that he wanted to pursue it professionally, he started looking into his options for a culinary arts degree during

the mid '90s before settling on Schoolcraft due to its growing reputation in the metro Detroit area with its 4 master chefs and a master pastry chef on faculty.

"The smaller teacher to student ratio was also a factor," he explained. "It allowed for a more personalized teaching relationship. Many of the instructors that I had inspired and encouraged me to get involved in other endeavors."

Chefs such as Sylvia Hayes served as one of his role models as she provided him with his foundation in the culinary field and taught him using both 'classical' and 'quick' methods of food preparation. Davenport also worked as a teacher assistant to Certified Master Pastry Chef Joseph Decker, at the student-run

Professor Pantry, which prepared baked goods for instructors to take on the go.

He also recalled taking a trip to Singapore and Thailand in 2000 with retiring Chef Leopold as a tour guide, teaching them about the countries' cuisine and culture.

"The greatest role model I had throughout the program was Certified Master Chef Jeffrey Gabriel though. He would always tell us stories about his time in the Navy, cooking for his crew, and how he used his GI Bill. He inspired me to join in 2000 and that was when my culinary career took off," Davenport commented.

Davenport worked in various restaurants over a period of seven years earning recognition as 2015 USA Chef of the Year before he enlisted in the Navy. Once there, he worked his way up the ranks and even did a 14-month deployment in Herat, Afghanistan

to train the army on how to cook. Davenport also served five years on the USS Annapolis, a fast attack submarine that would take him to places such as Italy, France and Crete as he prepared dishes for all on board.

He would later become a part of the United States Culinary Arts team which was formed in 1976 and is open to chefs involved in the armed forces. In 2012 and 2016, Davenport competed on the team for the Culinary World Cup and would win a total of three medals, 1 gold and 2 silver, for his work.

Davenport also encourages professional chefs to consider volunteering within the armed forces to conduct training for military cooks on how to make the best food possible, even when ingredients are limited or not the best.

The public can also consider supporting the troops through various programs by researching the Wounded Warrior Project or by visiting the United Services Organization website at uso.org/about.



Photo courtesy of trzarcak.com

Pumpkin and chai mousse over spice cake with poach pear and yogurt ice cream. Prepared by Chef Derrick during the 2016 World Culinary Olympics in Erfurt, Germany.

Honoring the best

PTK celebrates achievement with “member of the month” program

BEN BOLSTRUM
Staff Writer

From November until April, Phi Theta Kappa (PTK) Honor Society is celebrating the achievements of their members through their “Member of the Month” program. Winners will be given a \$150 gift card to EyeGlass World, a certificate of the accomplishment and a feature chronicling their academic journey that will be posted to PTK’s social media.

Qualifying Schoolcraft students must be a current

member of the Omicron Iota chapter of Phi Theta Kappa and should meet the following requirements: (1) Students must have a minimum GPA of 3.5, (2) Must have completed 12 credit hours towards an associate or bachelor’s degree or 6 hours completed towards a one-year certificate, (3) Participate in three events over a three-month period.

Featured members are intended to be strong representatives of the chapter and make an effort to be strong pillars of the community.

“PTK is an opportunity to enhance your college experience,” states Matthew Fular, President of the Phi Theta Kappa. “This is especially true with those who become active in the chapter. It helps buff your resume and stand out. More importantly, I believe it holds you accountable for your academics.”

Phi Theta Kappa has 3.5 million members who strive to uphold the Hallmarks of the Phi Theta Kappa International Honor Society which are: Fellowship, Leadership, Service and

Scholarship. They’ve been aiding students for over 100 years and continue to provide students with opportunities for professional development and academic success.

For more information about the Omicron Iota Chapter of Phi Theta Kappa, please contact the Student Activities Office at 734-462-4422 or Matthew Fular at MatthewFular.ptk@gmail.com.



PHI THETA KAPPA
HONOR SOCIETY

Ocelots achieve

Exam-a-Rama returns to help prep students for finals

CHANTELE FOX
Editor-in-Chief

One of the toughest tasks during a students’ college experience is finals week and preparing for them isn’t any less difficult; but luckily, there’s a solution. Exam-a-Rama is returning to the Learning Center, offering assistance to students as they prepare for their upcoming final exams.

Exam-a-Rama will be held Dec. 5 from 8 p.m. until midnight, as well as Dec. 6 and 7 from noon until 4 p.m. in the Learning Center, Room L119 of the Bradner Library.

Tutors will offer assistance to students currently enrolled in most math, biology, chemistry, physics and accounting classes, as well as writing support. Sessions will focus on either the students’ exam review packet or a question

and answer session. Additionally, the Learning Center is equipped with calculators and other materials needed to help students prepare. Professors are also ready to help their students as they provide some content for review during these sessions.

“Exam-a-Rama is the Learning Center’s biggest event,” states Carrie Ross, PAL for the Learning Center. “We have drop in tutoring for all of the major subjects including Math, Physics, Chemistry and Biology on Dec. 5 from 8 p.m. until midnight. For the rest of the weekend, we have final exam review sessions scheduled that will go through the final exam review packets students receive for Math classes from Math 45 through Math 129.”

Moreover, students enrolled in a specific math course will not

only have access to in person tutoring session, but as an added convenience a live-webinar is available. Please visit the Exam-a-Rama website for a list of eligible math courses.

This resource is free to all Schoolcraft students and they are encouraged to take advantage of this opportunity to enhance their studies.

For dates and times pertaining to a specific course, schoolcraft.edu/lac/success-seminars-and-workshops/exam-a-rama.

For further information about Exam-a-Rama or subject availability, please contact the Learning Center at 734-462-4436.



Photo by Clarisa Russenberger, Photo Editor

Exam-a-Rama is returning to the Learning Center to assist students in preparing for their upcoming final exams. Students can receive assistance in most math, biology, chemistry, physics and accounting classes.



Photo by Mather Fular, Phi Theta Kappa President.

The Schoolcraft Connection is hiring writers, photographers and a Sports Editor. Applications are available in the Student Activities Office located in Lower Waterman, VT.

Get connected, stay connected

Schoolcraft Connection offers forum of open expression to all

CHANTELE FOX & CHRISTIAN HOLLIS
Editor-in-Chief & Managing Editor

“Stay Connected”, the hashtag used across all social media platforms, in-print and online publications by the Schoolcraft Connection whose mission is to provide current and factual information to the campus community through News and Feature Stories, Campus Life Events, the latest in Arts and Entertainment and all things Schoolcraft Sports.

The Schoolcraft Connection is currently hiring for staff writers, photographers, layout

artists and a Sports Editor. The staff positions receive \$10 per published assignment, Editor positions receives \$1,100 scholarship per semester.

We welcome all students enrolled in at least 6 credit hours to consider joining. Experience is preferred but not necessary and you don't have to be a journalism major to be a part of our team.

We also invite community members, faculty, staff and students to offer story ideas. Simply come by the Student Activities Office any day from 8 a.m. to 7 p.m. to pick up an

application and fill it out. Once the application is completed, you will be directed to make an appointment with Career Services to fill out paperwork. After you've successfully cleared the necessary steps, you are a part of the team.

The Schoolcraft Connection holds weekly staff meetings to discuss upcoming publications and story ideas. These meetings are held every Monday (unless otherwise noted) in Conference Room E of the Lower Waterman located in the VisTaTech Center. Meetings will last from 4 to 5 p.m. and walk-ins are welcome.

The Schoolcraft Connection teaches students to complete assignments under the pressure of a deadline. We also teach tools that are frequently used in the business world today, such as Trello and Gmail.

As always, don't forget to follow the Schoolcraft Connection on social media including Twitter, Instagram, Facebook and YouTube to #StayConnected.

For more information about the Schoolcraft Connection or any of the other student clubs on campus, please contact the Student Activities Office at 734-462-4422.

COLLEGE VISITS

Students interested in transferring can meet with representatives or advisors from the following universities to answer any general questions and schedule advising appointments.



Eastern Michigan University - Advising
Dec. 2
9 a.m. to 4 p.m.
McDowell Center, Room 105



Concordia University - Ann Arbor
Dec. 4
10 a.m. to 1 p.m.
Biomedical Technology Center



Oakland University
Dec. 4
11 a.m. to 3 p.m.
VisTaTech Center



Wayne State University - College of Education
Dec. 5
10 a.m. to 2 p.m.
VisTaTech Center



Indiana Wesleyan University
Dec. 5
11 a.m. to 2 p.m.
VisTaTech Center



Wayne State University - Advising
Dec. 5
1 to 4 p.m.
McDowell Center, Room 105



University of Michigan (Dearborn) - Advising
Dec. 9
9 a.m. to 4 p.m.
McDowell Center, Room 105

Fall Club Schedules

MONDAY

Project Playhem

1 to 2 p.m.

Room E

Schoolcraft Connection

Student

Newspaper

4 to 5 p.m.

Room E

Project Playhem-Smash Bros.

Tournaments

6 to 11 p.m.

Lower Waterman

TUESDAY

Christian Challenge

12 to 1:30 p.m.

Room D

Environmentally Friendly Club

1 to 2 p.m.

Room C

Business Club

(Bi-monthly, beginning Sept. 10)

1:00 to 2:30 p.m.

Room D

Student Activities Board

2 to 3 p.m.

Room E

Amnesty International

(Second Tuesday of the month)

4:30 to 5:30 p.m.

Room D

Safe Place

5 to 7 p.m.

Room C

WEDNESDAY

Black Student Union (Every other week beginning Sept. 25)

1 to 2 p.m.

Room E

International Student Organization

2 to 3 p.m.

Library 110

Project Playhem

2 to 3 p.m.

Room E

Engineering Club

5 to 6 p.m.

BTC 245

THURSDAY

Art Club

1 to 4 p.m.

Forum 370

Campus Crusade CRU

1 to 2 p.m.

Room C

Table Top Tennis Club

2 to 10 p.m.

Room D

Safe Place

5 to 7 p.m.

Room C

FRIDAY

CGT Club

2 to 7 p.m.

JC 110

Math & Physics Club

10 to 11 a.m.

BTC 300

SATURDAY

Otaku Anime Club

12/14 & 12/21

5 to 10 p.m.

Lower Waterman

DATES AND TIMES ARE SUBJECT TO CHANGE.
 MORE COLLEGE VISITS MAY BE FOUND ONLINE AT
WWW.SCHOOLCRAFT.EDU.

CAMPUS & CLUB EVENTS

ALL EVENTS ARE FREE AND OPEN TO THE PUBLIC UNLESS OTHERWISE NOTED.

POSTER SALE

Dec. 2 to 6

9 a.m. to 8 p.m.

VisTaTech Center

Student Activities Center, Lower Waterman

Hundreds of posters will flood the Student Activities Center in early December. From classic film to modern anime, there are plenty of posters for everyone. This year's sale partial proceeds will be going to the Wish Upon a Teen program. This program is dedicated to providing resources and empowering teenagers with severe life-limited medical conditions. Through creative, social and educational opportunities their goal is to normalize their environment and rebuild self-esteem as they transition into adulthood. Prices vary and are priced as marked.

DIVORCE SOLUTIONS ESSENTIALS - MONEY MATTERS IN DIVORCE

Dec. 2

4 to 6 p.m.

Hinkle Center (McDowell Center, Room 123)

Individuals will be presented with the opportunity to speak with a certified divorce financial analyst about the financial concerns relative to divorce. This is a first come, first serve event and is open to the entire community. Sign in begins at 3:30 p.m.

For more information, contact the Hinkle Center at 734-462-4443 or hinklecenter@schoolcraft.edu.

CEPD PHOTOGRAPHY CERTIFICATE STUDENT SHOWCASE

Dec. 3

12 to 1 p.m.

Jeffress Center

CEPD is inviting the public to see photography by students from the

fall semester. The display will be outside the photo studio.

For more information, contact CEPD at 734-462-4448 or email cepd@schoolcraft.edu.

PUTTING SOCIAL MEDIA TO WORK FOR YOUR BUSINESS

Dec. 3

4 to 7 p.m.

Jeffress Center, Room 127

The Michigan Small Business Development Center are hosting a seminar to help entrepreneurs navigate the lands of social media. The price of admission is \$45 and can be registered on WebAdvisor. Students are asked to have an email to use and basic understanding of social media.

For more information on registration visit schoolcraft.edu/college-events/2019/12/03/college-events/putting-social-media-to-work-for-your-business.

ANIME NIGHT

Dec. 3, 4, 10 & 11

4 to 6 p.m.

Bradner Library, Room 110

Come watch anime and meet some fellow students at this event. The choice is up to those who attend and prizes are available once a month to a Crunchyroll streaming service.

For more information, contact Joseph Miller at 734-462-7674 or jmiller@schoolcraft.edu.

GRAPHIC NOVEL SHOWDOWN

Dec. 4

7:30 a.m. to 10 p.m.

Bradner Library

This semester long event provides faculty, students, and staff the chance to assist in choosing what novels the Bradner Library will be collecting throughout the year. Novels will

go up against each other through three rounds until top contenders are championed at the end of the year.

For more information, contact Joseph Miller 734-462-7674 or jmiller@schoolcraft.edu.

JOB SEARCH SOLUTIONS - RESUME ESSENTIALS

Dec. 4

1 to 2:30 p.m.

McDowell Center, Room 100

A certified resume writer will be available to demonstrate how to create a targeted resume that documents skills and experience to employers. It will also help potential employees to get past preliminary pre-screening while highlighting what employers look for in a resume and cover letter. This event is free and open to the public, with no prior registration required.

For more information contact, Career Services at 734-462-4421 or careerservices@schoolcraft.edu.

BACH FESTIVAL PIANO AUDITIONS

Dec. 7

8 a.m. to 4 p.m.

Forum

Auditions are being held for the Bach Festival in the Forum. Schoolcraft sponsors three festival events every year. Students selected during auditions will play in the Honors Recital.

For more information call Patricia Minnick at 734-462-4403 or email the music department at schoolcraft.edu/music.

VOLUNTEER AT ST. LEO'S SOUP KITCHEN

Dec. 14

8 a.m. to 1 p.m.

Student Activities is inviting faculty, students and community members to volunteer at St. Leo's

Soup Kitchen. Those that attend will serve food to the homeless in downtown Detroit. Phi Theta Kappa members that attend will receive 1/4 star for their time at the event. Attendees can meet in Lower Waterman of the VisTaTech Center with the option of carpooling to the location.

For more information, call the Student Activities Office at 734-462-4422.

EMPTY BOWL LUNCHEON

Dec. 9

11 a.m. to 2 p.m.

Wilson Room, VisTaTech Center

Help erase hunger by purchasing a hand-crafted bowl created and donated by Schoolcraft Ceramic Students. With every purchase one receives a bowl of hearty soup donated by Food Services and freshly baked bread donated by Culinary Arts. All proceeds to benefit the Schoolcraft Food Pantry.

For more information, contact the Student Activities Office at 734-462-4422.

DIVORCE SOLUTIONS ESSENTIALS - ASK AN ATTORNEY

Dec. 10 & 16

4 to 6 p.m.

Hinkle Center (McDowell Center, Room 123)

Fausone Bohn, Jackman and Kasody or Cole Family Law will have an attorney to represent their respected firm to inform potential clients on divorce and family law. Sign in starts at 3:30, and clients will be served on a first come, first serve basis.

For more information, contact the Hinkle Center at 734-462-4443 or hinklecenter@schoolcraft.edu.

LAUNCHING YOUR NEW BUSINESS

Dec. 10

6 to 8 p.m.

Jeffress Center, Room 123

Meet with a small business consultant to speak about topics such as funding, using market research and creating a business plan. Registration is \$49 and can be done through WebAdvisor.

WEDNESDAY NOON CLASSICAL CONCERT

Dec. 11

12 to 1 p.m.

Kehrl Auditorium, VisTaTech Center

Jazz composer Paul Keller is hosting an ensemble for popular Christmas songs. Keller is joined by lead vocalist Sarah D'Angelo, trumpeter Paul Finkbeiner, pianist Ellen Rowe, trombonist Terry Kimura, drummer Sean Dobbins and saxophonist Keith Kaminski.

The Noon Concerts are free to the public but donations

are encouraged to help pay for student scholarships.

BACH FESTIVAL HONORS RECITAL

Dec. 13

7 to 8 p.m.

Kehrl Auditorium, VisTaTech Center

The music department is inviting the Schoolcraft community to come and enjoy the Bach Festival Honors Recital. The event is free to attend.

For more information, email the music department at music@schoolcraft.edu.

SOUNDS OF THE SEASON CONCERT

Dec. 14

7:30 to 8:30 p.m.

DiPonio Room, VisTaTech Center

The Sounds of the Season is an annual concert at Schoolcraft College. This year the Collegiate Chorale, Synthesizer Ensemble and Wind Ensemble. The concert

is free, however, donations are encouraged for student scholarships.

For more information, email the music department at music@schoolcraft.edu.

WINTER WONDERS CONCERT

Dec. 16

7:30 to 8:30 p.m.

DiPonio Room, VisTaTech Center

Dr. Riccardo Selva is directing the Winter Wonders Concert for the Schoolcraft Jazz Studies Program. The Jazz Ensemble, Vocal Jazz Ensemble and Jazz Improvisation Combo will provide their talent during the concert.

For more information, email the music department at music@schoolcraft.edu.

STUDENT SERVICES SATURDAY HOURS

Jan. 4 & 11

10 a.m. to 2 p.m.

McDowell Center

Student Services are extending their hours before the beginning of the semester to assist new and current students with last minute assistance on getting adjusted to classes. New students that are not yet registered are recommended to provide transcripts and ACT/SAT scores if they are available.

For more information, contact Student Services at 734-462-4426 or email answers@schoolcraft.edu.

REMOTE PILOT INFORMATION

Jan. 13

6 to 7 p.m.

Jeffress Center, Room 124

CEPD is inviting the community to learn more about Remote Piloting. Potential students will have the opportunity to meet with instructor Chris Meyer. Meyer will discuss FAA requirements, remote pilot classes and Schoolcraft's certificate program. This event is free to the public.

For more information, please visit schoolcraft.edu/drones.



Stolen iPhone 10

Location: St. Joes Sports Dome

A student and his friends were playing an hour long game of soccer at the Sports Dome when his phone went missing after going to the restroom. He and his friends searched the restroom and soccer field but did not locate the missing

iPhone. The student believes that since there were other people besides himself and his friends and that he could've dropped his phone on the field, someone else may have picked it up. The student was unable to call the phone because it was turned off and he was unable to locate it through GPS.

This phone is a black, year-old iPhone with a clear case and damage to the left corner. So far, the phone has not been turned in yet.

Shoplifting

Location: Bookstore

A Bookstore employee caught

a white female student on video stealing a 21 oz. Hydroflask water bottle. The bookstore employee registered the theft upon discovering seeing the price tag torn off and left behind, as well as the absence of one of the matching bottles on the shelf.

Further review of video footage found the student taking the water bottle off the shelf and putting it in her backpack. She then put the pack back on and purchased a Hydroflask bottle that matched the one she stole. The student was eventually caught and the matter was turned over to Student Services.

ARTS & ENTERTAINMENT

Smashing predictions

Latest Smash Bros. news inspires new character predictions

EVAN CEREZO

Layout Editor

“Super Smash Bros. Ultimate” has what is probably the most iconic and diverse roster of any official video game release.

Releasing in December with a whopping 75 characters, the game planned the release of an extra five characters in a Fighter Pass through downloadable content (DLC). As this year ends, the introduction of Terry Bogard marked the fourth character added from this pass. Head developer Masahiro Sakurai has recently stated that even more characters will be added to the roster after the Smash Bros fighter pass is finished, which begs the question, who else will be added?

With third party characters like Joker from Persona 5 and Banjo Kazooie from Banjo-Kazooie now in the roster, it seems as though there is no limit to characters that could potentially be added into the game.

Maybe I'll be Tracer?

Lena Oxton, better known by her



Photo courtesy of wikipedia.org
Tracer's splash art from the cover of Overwatch.

nickname Tracer, is a playable character and mascot of the Overwatch series. She has the ability to teleport short distances and rewind her movement thanks to her trusty chronal accelerator. Her time traveling and teleportation powers are coupled nicely with her dual wielded pistols, giving her great potential for a unique combination of ranged and speedy play.

In an interview with IGN, Overwatch director Jeff Kaplan was asked if he was open to the idea of adding an Overwatch character to “Super Smash Bros. Ultimate.” Kaplan responded, “To the Smash Brothers team, whatever character you want, we love them all. They’re all our babies, you can have any single one of them. We have 31 to choose from ... Tracer’s our girl, Tracer’s our mascot. She’d be my first choice.” On top of saying that Tracer is free for grabs, Blizzard also just announced their newest title “Overwatch 2.” This means that adding Tracer to “Super Smash Bros. Ultimate” would draw attention to their brand and help them advertise their new title, making it a mutually beneficial decision.

Paper Mario Makes a Splash

Between Super Mario Bros., Donkey Kong, Yoshi and the Wario series, the Mario universe has a whole 14 characters representing them in “Super Smash Bros. Ultimate.” It surprises no one

that Nintendo’s mascot and his crew get such a large percentage of the Smash Bros roster, but it does surprise some to see that Paper Mario is missing from that bunch.

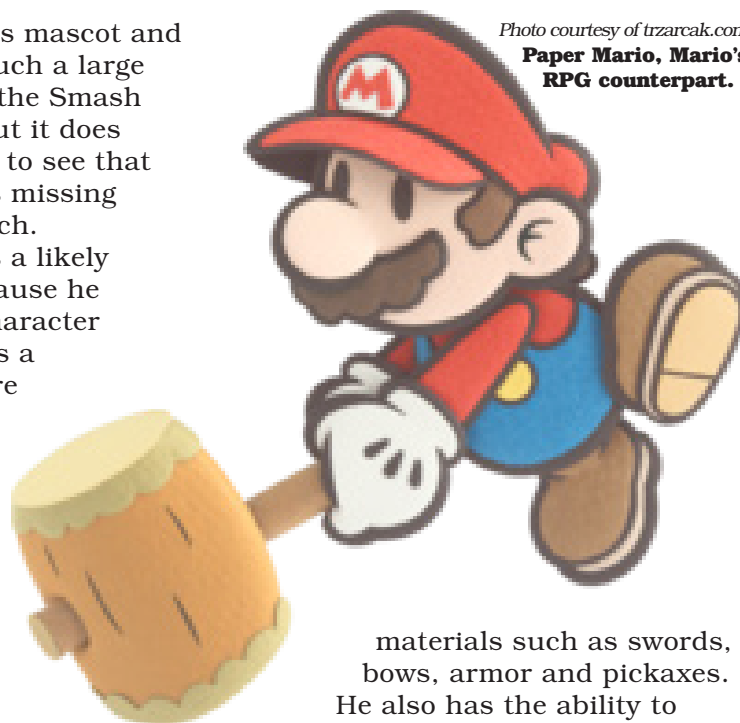
Paper Mario is a likely candidate because he is an iconic character and represents a whole subgenre of the Mario Franchise.

He even has his own stage in the game already! Unlike the Super Mario Bros. series, Paper Mario is primarily a RPG game based around turn based combat. Paper Mario separates himself from his platforming roots with a wide array of weapons to dispose. He wields a large wooden mallet, uses mushrooms spells to heal and even has sticker specials that would translate into a great final smash.

Minecraft’s Steve crafts a position

Minecraft is the bestselling single-purchase video game of all time, just recently passing up Tetris in May of this year. Steve, the main character of the series, is one of the most iconic characters of all time. Steve would fit right in with Smash Bros and its collection of iconic characters. He has quite an arsenal of tools and

Photo courtesy of trzarcak.com
Paper Mario, Mario’s RPG counterpart.



materials such as swords, bows, armor and pickaxes.

He also has the ability to build and destroy terrain, which could make for a unique mechanic that would help Steve stand out from the other 80 characters.

With Sakurai’s recent addition of Microsoft’s Banjo-Kazooie to the roster, their relationship



Photo courtesy of neoseeker.com
Paper Mario stickers used to activate abilities.



Photo courtesy of trzarcak.com

Minecraft Steve, wielding his signature diamond sword.



Photo courtesy of trzarcak.com

Monster Hunter from "Marvel vs. Capcom Infinite".

with Nintendo is stronger than ever before. This is a great opportunity to add one of the industry's biggest mascots to the greatest roster in gaming history.

Monster Hunter Comes to Hunt

Monster Hunter is one of Capcom's biggest and most profitable franchises. With Monster Hunter World passing up Street Fighter 2 as Capcom's best-selling title and Monster Hunter 4 being released on both the Nintendo Switch and 3DS, it is a very exciting time to be a fan of the Monster Hunter series. But without the Monster Hunters themselves, the series wouldn't be where it is today.

The Monster Hunter from Monster Hunter could be a unique character because there is no one Monster Hunter. The character is your avatar when playing the game, and as such, there are a lot of options for weapons and customization. The Monster Hunter would most likely be armed with a longsword, as it is the most popular weapon, but could easily swap to all sorts of bows, cannons and spears for different special moves and aerial attacks.

Capcom already has Megaman, Ryu and Ken in "Super Smash Bros. Ultimate," so it is not too farfetched to believe they would add representation from another one of their best-selling franchises.

Bandana Waddle Dee Stumbles into Battle

Kirby is a popular series, but it only has 3 characters in the Ultimate roster. Kirby was also created by Masahiro Sakurai, the same Sakurai that directs the Smash Bros series. As one of Nintendo's flagship series, Kirby has been represented in Smash since the first title. The series is full of mostly mooks and goons, but a few recurring



Photo courtesy of denofgeek.com

A team of monster hunters about to fight Rathalos for a quest.

characters like King DeDeDe and Meta Knight continue to appear. However, alongside these two, the Bandana Waddle Dee has continued to be featured as a playable character in the Kirby franchise.

As opposed to a regular Waddle Dee, Bandana Dee carries a spear that it uses for combat. Its spear can be used to jab, throw, or even twirl in a helicopter fashion for short distances of flight. The Bandana Waddle Dee would make a great addition as a more down to earth character who is less alienating to newer players because of complexity.

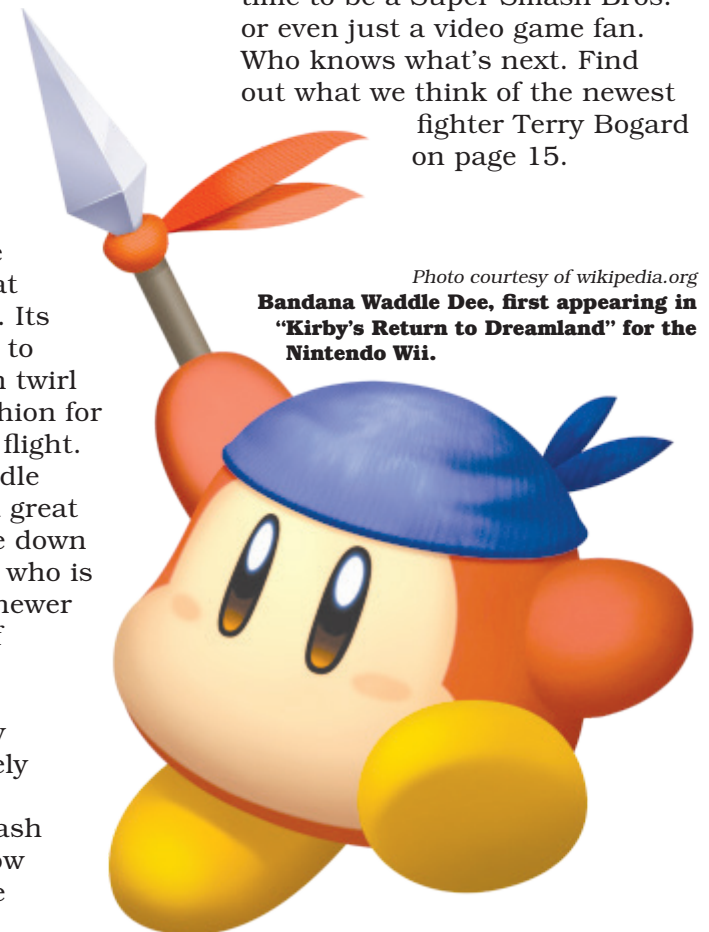
The gate has been opened many characters are likely candidates for the series. "Super Smash Bros. Ultimate" now has such a diverse roster that even

the most obscure third-party characters could be pulled out of nowhere for DLC.

Overall, it's a very exciting time to be a Super Smash Bros. or even just a video game fan. Who knows what's next. Find out what we think of the newest fighter Terry Bogard on page 15.

Photo courtesy of wikipedia.org

Bandana Waddle Dee, first appearing in "Kirby's Return to Dreamland" for the Nintendo Wii.



Back down memory lane

Tory Lanez revisits early 2000's R&B on "Chixtape 5"

Tory Lanez's "Chixtape 5"
Album 10/10

MARVIN POINDEXTER
Staff Writer

Over the past four years of his career, Toronto star Tory Lanez has proven and even cemented himself as one of music's most talented acts. He has released three studio albums. "I Told You" (2016), "Memories Don't Die" (2018) and "Love Me Now?" (2018). All three projects showcased how much of a working "machine" Lanez is when it comes to making and releasing music (not including features).

Before his take off in 2015, Lanez was already hard at work creating a name for himself in the music world. However, of all the projects in his discography, there were (are) a series of mixtapes dubbed the "Chixtapes" that would attract more attention to Lanez

and his music; one could even say the series created a "cult" of sorts for him.

The Toronto Singer/Rapper has decided to revisit this series, but instead taking it one step further by making the latest installment in the series, in the form of an album. The latest entry being "Chixtape 5."

What the "Chixtape" series essentially is, a four (now five) mixtape and (now) album series compiled of tracks and made mixed with "samples" of hit classic R&B songs spanning over from different eras in music.

Each tape is dedicated or appointed to a certain era of R&B whether it's mid to late or even early 80s, 90s and 2000s. For "Chixtape 5" Lanez opted to solely sample from songs from that of the early 2000s era, ranging from 2000 to 2005 (though some songs are from 2007), where as compared to "Chixtape 4" the artist sampled from late 90s to early 2000s.

Aside from the sampling of

timeless classics from different eras, what makes the Chixtape series stand out much like or unlike the rest Lanez's discography, is that they're a series within itself. The series is more than just "a bunch" of compiled music sampled with classic songs, each tape tells a story in the form of a skit. "Chixtape 5" continues this "tradition" by bringing back the character Jalissa. The story essentially being about Jalissa getting her revenge on Lanez after a "situation" between the two took place in the story (listen to Chixtapes 2 to 4 to follow the story). In the most current tape Jalissa is back to exact her "revenge" on him.

Throughout the course of 2019, Lanez has been diligent about keeping fans "updated" on the progress of "Chixtape 5", such as why it took so long to release. In a recent interview with Big Boi's Neighborhood, Lanez stated that part of the reason why it took so long to release "C5" was because of sample clearances. Much like the other "Chixtapes" this has been a recurring issue with Lanez and the tapes.

"The reason why they're not

anything like Spotify or Apple music, is because of the sampling." A prime example of what Lanez stated comes from his use of sampling Disney's "The Proud Family" theme song, "Proud" on "Chixtape 4" back in 2017.

Unlike the other tapes, what makes "Chixtape 5" different from the others is the fact that it's categorized and "treated" as an album, making this Lanez's fourth studio album. From a fan perspective even without Tory putting his input on how much he "went all-out" for the album, one can tell themselves how much detail was put into the project. Each song along with its respective feature showcases, the time period of R&B chosen to implement on the project.

"Chixtape 5" boast features from artist that were either in their prime, or cemented as "icons" during the time. Chris Brown featured on "The Take," which samples Chris' own song "Take You Down" (2007), which finds both Lanez and Brown talking about bedroom antics, with Brown giving a revamped verse on remastered/imagined classic.

Trey Songz "Still Waiting,"



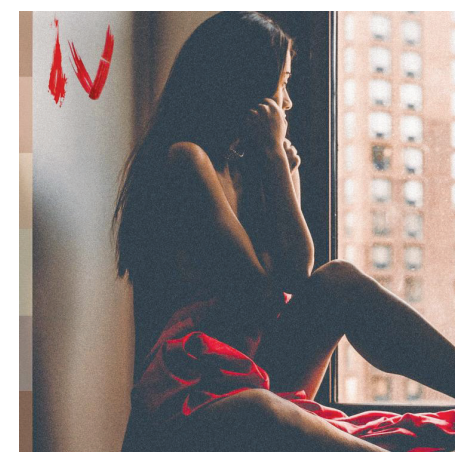
Photos courtesy of genius.com
"Chixtape 1" album cover, released in 2011.



"Chixtape 2" album cover, the project was released back in 2014.



"Chixtape 3" released in 2015 featured samples from artists such as Alicia Keys.



"Chixtape 4" released in 2017 which featured the song "Proud", using Disney's "The Proud Family" theme song.

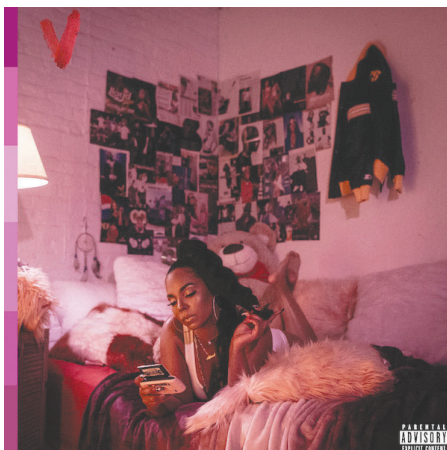


The “Chixtape 5” continues a series that features a story about a love interest.

samples Trey’s “Can’t Help But Wait” (2007), Mario on “The Cry” which samples and his 2007 “Crying Out For Me.” Other features include Snoop Dogg, Jagged Edge and Jermaine Dupri, T-Pain, Ludacris and more.

Aesthetically, “Chixtape 5” is well put together and continues the plot of what Lanez started eight years ago. Each song is placed perfectly after each other on the album, which helps with the skit and duration of the project. Even the title of each song helps explain each situation within the plot of the skit.

“Chixtape 5” is available to stream on YouTube Music, Soundcloud, Apple Music and Spotify, as well as other streaming platforms.



The “Chixtape 5” features Ashanti on the album cover, holding/using a “Sidekick”.

The King of Smash



Photo courtesy of nintendo.com

Terry Bogard from the King of Fighters and Fatal Fury series is the fourth character in the fighter pass.

Terry Bogard brings the fury in “Super Smash Bros. Ultimate”

Terry Bogard “Super Smash Bros. Ultimate”
DLC 9/10



CHRISTIAN HOLLIS
Managing Editor

“Super Smash Bros. Ultimate” has not slowed down the hype train since its reveal in spring 2018. Almost a year after the announcement of the fighter pass, SNK’s Terry Bogard from “Kingdom Fighters” and “Fatal Fury” join the Ultimate roster.

Coming from a traditional fighting game, Bogard’s move set is much more strategic like a traditional arcade fighter. His move set uses actual combinations that no other character in Smash have implemented. After reaching 100 percent damage received, Bogard

has a chance to turn the fight around with “super special moves.” These moves do more damage than normal giving him a chance to come back from nail biting situations.

Bogard’s addition comes with a new stage that is like no other called King of Fighters Stadium. Instead of simply knocking opponents off the screen, fighters must break the barrier with enough force to knock out an opponent. If the opponent isn’t knocked back with enough force, they will bounce back onto the stage. Bogard also adds an astonishing 50 songs from classic SNK games.

Bogard’s run in Classic Mode is unique to himself. Titled “King of Smash,” he must defeat characters that are iconic in similar ways. Like Ryu and Ken, Bogard’s classic mode is played on stamina battle mode instead of the usual

“Smash.” He starts with 150 health while each fighter of the team of three opponents start with 100. This forces Bogard to play more strategic, having half the health of his opponents and it’s incredibly fun. Unfortunately, like the rest of the characters, the bonus stage is the usual coin rush. As many have mentioned before since launch, the bonus stages are repetitive and tedious.

Overall, Nintendo played safe with the addition to Bogard and that’s not a bad thing. He brings enough unique twists into the battle and is iconic enough to merit his spot in the fighter pass. Now there’s only one question - who’s next?

That we might not know until the Game Awards this December, but until then Terry Bogard has brought enough entertainment to keep players smashing for quite a while.

Pokémon takes

“Pokémon Sword and Shield” improves on winning formula

*“Pokémon Shield” reviewed
on Nintendo Switch*
8/10



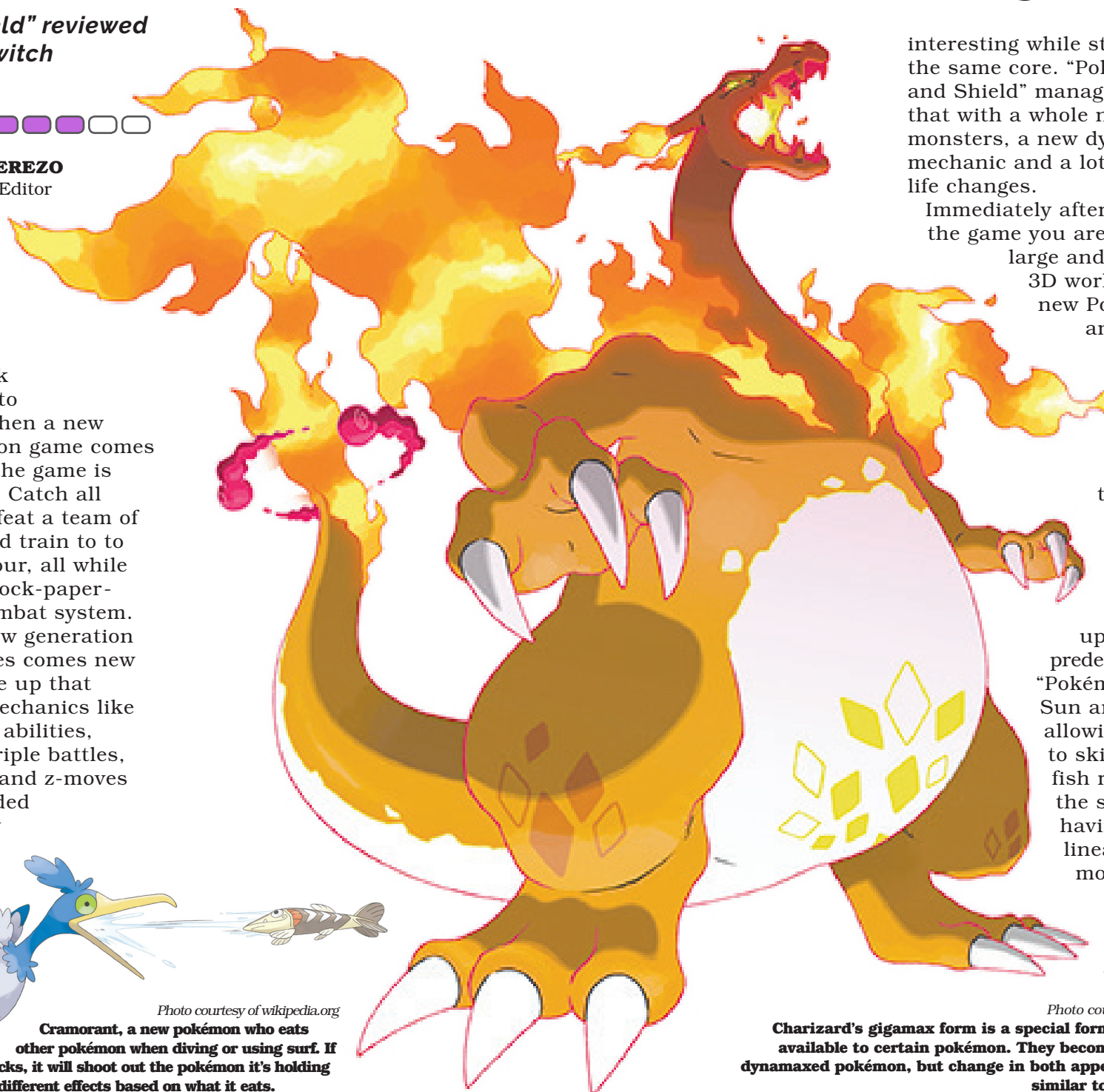
EVAN CEREZO
Layout Editor

Pokémon has been making sequels for almost 25 years now, and is almost a textbook example on how to make sequels. When a new main line Pokémon game comes out, the bulk of the game is largely the same. Catch all the Pokémon, defeat a team of crooks, battle and train to to defeat the elite four, all while using the same rock-paper-scissors-style combat system. But with each new generation of Pokémon games comes new additions to spice up that same formula. Mechanics like equipping items, abilities, double battles, triple battles, mega evolutions and z-moves have all been added slowly but surely to make the game more



Cramorant, a new pokémon who eats other pokémon when diving or using surf. If an enemy pokémon attacks, it will shoot out the pokémon it's holding for damage. It will have different effects based on what it eats.

Photo courtesy of wikipedia.org



interesting while still keeping the same core. “Pokémon Sword and Shield” manages to do just that with a whole new set of monsters, a new dynamaxing mechanic and a lot of quality of life changes.

Immediately after starting the game you are put into a large and explorable 3D world full of new Pokémon and beautiful backgrounds. After looking through the options menu and the world map, the player can see that the game has improved upon its predecessor, “Pokémon Ultra Sun and Moon”, by allowing the player to skip cutscenes, fish right from the start, and by having a more linear map with more side paths. The game’s tutorial is also much

Photo courtesy of wikipedia.org

Charizard's gigamax form is a special form of dynamax only available to certain pokémon. They become giant like other dynamaxed pokémon, but change in both appearance and stats, similar to mega evolutions.

on a new form

shorter than its predecessor, letting the player start the action much quicker than last time, and even allowing them to skip part of the tutorial when prompted.

Even past the beginning, the game continues to surprise the player with new features and quality of life changes that make the game better. The most notable addition is dynamaxing. In certain areas of the game, namely gyms, players can choose to dynamax their Pokémon, making them grow to a gigantic size. Dynamaxing raises a Pokémon's stats and makes all their moves extra powerful, but can only be used once per battle and lasts for three turns. The mechanic basically fuses mega evolutions and z-moves into one mechanic that can be used on any Pokémon. Certain Pokémon take a special form when they dynamax too, called gigamaxing, which makes them

look different & changes their stats after growing. The idea is great because it adds a special trump card to every team and spices up turn-based combat. Regional variant (Alolan form) Pokémon have also returned through the Galarian Pokémon. These forms act the same as the Alolan forms, giving new typings and stats to older Pokémon, some even getting new evolutions!

"Pokémon Sword and Shield" is not perfect though, as one primary complaint plagues the community and fanbase. The game has a lot more variety of Pokémon available to catch compared to other games, with the first route having almost 10 different Pokémon on it. But on the flip side of this, Pokémon from previous games can't be traded to either "Pokémon Sword" or "Pokémon Shield", and there are about 400 Pokémon not available anywhere in the wild. This

means that close to half of the Pokémon from previous games will not be able to be caught until a future title.

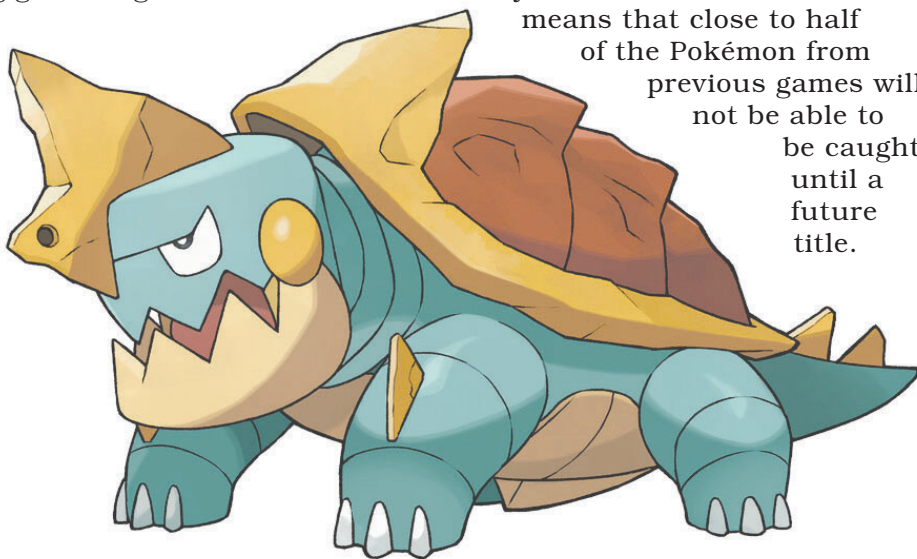


Photo courtesy of pokémon.com

A special pokéball used to store special dynamaxed pokémon.

Many fans are disappointed that a lot of their favorite characters have been cut from the roster, as trading to the next Pokémon title has been a staple since Pokémon Ruby and Sapphire in 2002.

While it is disappointing that many older Pokémon were cut, there are still almost 100 new Pokémon added to the roster, making it fun and exciting to explore the new region. Coupled with the new quality & visual changes, the game turned out to be pretty solid. Overall, the game is mostly the same, so fans of the previous games will likely still be a fan of this title, but little was made to bring new people into the fanbase.



Drednaw, one of the new species of pokémon.

Photo courtesy of pokémon.com



Photo courtesy of wikipedia.org

Centiskorch's gigamax form, a special form of dynamax only available to certain pokémon.

A new big dog in town

Theatre department presents
“Sylvia” this coming January

KEVIN O'NEIL
A&E Editor

This January, the Schoolcraft Theatre department presents “Sylvia,” a lighthearted romp into the value of relationships.

In 1980s New York, a middle-aged, middle class man named Greg finds a dog named Sylvia in a park, and is immediately smitten with her. He brings his newfound friend back to his empty nest he shares with his wife Kate. When Kate returns from work, she is instantly appalled by the pooch, and demands that Greg gets rid of her.

They eventually agree on a compromise, letting Sylvia have a trial period of a few days before they decide if they want her for good - but Greg and Sylvia have already bonded.

During the following days, Greg and Sylvia spend more and more time together; already plagued by a dissatisfying job, long walks and long talks with Sylvia are just another reason to ignore his job and spend less time at his job.

Greg and Sylvia go on long walks, discuss life and astronomy. Already dissatisfied with his job, Greg now has another reason to avoid work.

Friction builds between Greg and Kate, with Kate still abhorring Sylvia and Greg obsessing over her more than ever; all of this tension makes Kate fear for their marriage.

Kate and Sylvia are at odds with each other, each devoted to the other's downfall.

Greg is met by a particularly strange stranger at the dog run, who offers their advice on how to manage the whole Sylvia versus Kate situation. The fates of love, lives, and livelihoods hang in the balance of all this drama; what could become of it?

“Sylvia” was first produced in 1995, with a revival in 2015, though no single rendition will be the same as any other.

“We’re not trying to mimic those performances, of course every actor will bring a new spin on each of the characters. There’s a set of three characters who are written to be played by one man...” says Director Paul Beer. The mentioned three-for-one role will be played by a non-male, setting the performance apart from others. “And I think our audience, our small stage, will create a very intimate version of this play.”

Something that really gives this play character is, well, one of the main characters: Sylvia.

“Well, you don’t often see a woman playing a dog...” says the young actress Destinee Palazzolo. “People are like ‘Oh, what part do you have in this play?’ ‘Oh, I’m playing the dog - it’s OK! It’s not demeaning, I’m the lead!’”

This lovely little romp begins showing Jan. 24, 25, 26, 30 and Feb. 1.

PLAYBILL

CORT THEATRE



Photos courtesy of wikipedia.org

Join the Schoolcraft Theatre department as they present, “Sylvia”, a lighthearted romp into the value of relationships.

Show times for Jan. 24, 25, 30 and Feb. 1 performances begin at 8 p.m. A special matinee show will be on January 26 at 2 p.m. All performances are \$15.

Tickets are available by calling 734-462-4596, in person at the Schoolcraft College Cashier in the McDowell Student Services

Center or online at <https://www.brownpapertickets.com/event/4321308>. All sales are final.

Performances are in the James R. Hartman Theatre, Liberal Arts Building on Schoolcraft's Livonia Campus. There is no dinner theatre available for this production.

ON THE PROWL



DOWNTOWN DETROIT HOLIDAY MARKETS

**Cadillac Square and Capitol Park
Downtown Detroit
Detroit, Mich.**

Now to Jan. 1, 2020

Markets: Wednesday & Thursday

11 a.m. to 8 p.m.; Friday &

Saturday 11 a.m. to 10 p.m.;

Sunday 11 a.m. to 7 p.m.

Lodge: Wednesday 4 to 9 p.m.;

Thursday & Friday 4 to 11 p.m.;

Saturday 11 a.m. to midnight;

Sunday 11 a.m. to 10 p.m.

Admission: Free

Detroit-based small businesses are popping up to join in our Detroit's advancing retail scene to provide you with immersive experiences. With a mission to support local entrepreneurial communities, each business showcased in the Downtown Detroit Markets is Detroit based, minority owned or female owned. Come and support your local institutions!

ROBOLIGHTS DETROIT MOCAD

4454 Woodward Ave.

Detroit, Mich.

Now to May 3

Tuesday, Wednesday, Saturday &

Sunday 11 a.m. to 5 p.m.; Thursday

& Friday 11 a.m. to 8 p.m.

Admission: \$5 suggested donation

Enthrall yourself in a spectacular new sci-fi themed art piece called "Robolights Detroit," by artistic mastermind Kenny Irwin, Jr. Guests are encouraged to roam the wandering paths of a whimsical carnival littered with alien spaceships, dinosaurs, robots and many other enchanting beasts. The light show will be a delight to people of all ages.

DETROIT SCAVENGER HUNT: ROLL THROUGH MOTOR CITY

Let's Roam Scavenger Hunts

50 East Jefferson Ave.

Detroit, Mich.

Now to Dec. 21

8 a.m. to 5 p.m.

Admission: \$11

Join the hunt for Downtown Detroit's legacy with Let's Roam Scavenger Hunts. They'll point out all of the finest spectacle along the way. Whether you're native born, new to town or just came to visit, this activity is something that anyone can relish. Be on the lookout for a large mixture of items you may come to find and prepare yourself to experience the city like you never have before!

DETROIT RED WINGS VS. NEW YORK ISLANDERS

Little Caesars Arena

2645 Woodward Ave.

Detroit, Mich.

Dec. 2

7:30 p.m.

Admission: Tickets start at

\$23

DETROIT PISTONS VS. MILWAUKEE BUCKS

Little Caesars Arena

2645 Woodward Ave.

Detroit, Mich.

Dec. 4

7 p.m.

Admission: Tickets start at \$24

HOLIDAY NIGHTS IN GREENFIELD VILLAGE

The Henry Ford

20900 Oakwood Blvd.

Dearborn, Mich.

Dec. 5 to 28

6:30 to 10 p.m.

Admission: GA \$30; Seniors

\$27; Youth \$22.50; 4 & Under

FREE; Members: \$25.50, \$23,

\$19.25

Mingle with merrymakers awash with the scent of charring chestnuts and burning bonfires, wreathed in the voices of carolers, fiddlers, sleigh bells and all shades

Graphic by Matthew Armstrong, Production Assistant

of Yuletide activity during Holiday Nights in Greenfield Village. All lantern-lit paths lead to wondrous winter discovery. What wonders will you uncover?

SANTA RUN AND WALK

411 E. Third St.

Flint, Mich.

Dec. 6

Noon

Registration: 5K: \$30; 1 Mile:

\$30, \$15 (12 or under, 5K or

1 mile); Kids Reindeer Run (1/4 Mile): \$10

Have a run for your money with the whole family at the Santa Run and Walk, with a 5K, 1 mile and a Kids Reindeer Run to make sure everyone has a blast! To make things extra special, a five-piece Santa suit is included in registration.

For more information or to register, visit runsignup.com/Race/WI/Waukesha/Waukesha5KSantaRunWalk.

DETROIT PISTONS VS. INDIANA PACERS

Little Caesars Arena

2645 Woodward Ave.

Detroit, Mich.

Dec. 6

7 p.m.

Admission: Tickets start at \$19

DETROIT RED WINGS VS. PITTSBURGH PENGUINS

Little Caesars Arena
2645 Woodward Ave.
Detroit, Mich.

Dec. 7
7 p.m.

Admission: Please call or go online for ticket prices and availability

HANDCRAFTERS TINSEL AND TREASURES HANDMADE MARKET

Northville Community Center
303 W Main St.
Northville, Mich.

Dec. 13 to 15

Thursday 9 a.m. to 8 p.m.;
 Friday 9 a.m. to 5 p.m.; Saturday
 11 a.m. to 4 p.m.

Admission: \$4, 12 and under
 FREE

For the 40th year in a row, Handcrafters Tinsel and Treasures returns to Northville, bringing handmade gifts for everyone on your list. You won't want to miss it!

HOLIDAY STROLL

Various Venues

Belle Isle

Detroit, Mich.

Dec. 13

5 to 8 p.m.

Admission: Free

The annual Holiday Stroll is a free event that brings thousands of visitors to Belle Isle every winter for a time chock-full of holiday cheer. Come along for some family fun, with performances, crafts, Santa and much more!

CIRQUE DREAM HOLIDAZE

Fox Theatre
2211 Woodward Ave.
Detroit, Mich.

Dec. 13 to 15

Friday 7 p.m.; Saturday 2 p.m. & 7 p.m.; Sunday 1 p.m. & 6 p.m.

Admission: TBA

Feast your eyes on the astonishing Cirque Dreams Holidaze, returning to the Fox Theatre by popular demand. This widely-renowned wonder is built upon a wonderland of elaborate scenes, directed by founder Neil Goldberg, who has searched every land and sea to construct the unique band of performers to whisk the audience away.

MOSCOW BALLET'S GREAT RUSSIAN NUTCRACKER

Fox Theatre
2211 Woodward Ave.
Detroit, Mich.

Dec. 22

Noon

4 p.m. & 8 p.m.

Admission: Tickets start at \$29

Experience the grandeur of Moscow Ballet's Great Russian Nutcracker, wander into a magical time of the warm and golden dreams of Christmas. Featuring masterful artists, hundreds of stunning costumes, spectacular sets, monolithic puppets and much more. Don't miss your chance to welcome the holiday season with this infamous Christmas spectacular

CHRISTMAS SPECTACULAR.

Hip-hop Nutcracker
Masonic Temple
500 Temple St.
Detroit, Mich.

Dec. 23

7 p.m.

Admission: \$35 to \$79.50

Orchestrated by director and choreographer Jennifer Weber, The Hip Hop Nutcracker is a modern-day dance spectacle stepping to the beat of Tchaikovsky's immortal music. A delightful one-of-a-kind event, this production is performed by an unbeatable DJ, a high-gear cast of all-star dancers and proclaimed founding father of hip hop MC Kurtis Blow opening the show.

THE SPONGEBOB MUSICAL

Fox Theatre
2211 Woodward Ave.
Detroit, Mich.

Dec. 26 to Jan. 5

Admission: TBA

What do you get when you take a roster of legendary Grammy® Award winners, an ambitious director, a Tony Award®-winning design team and one of the Earth's most adored television characters? The fearless, the original, SpongeBob Musical!

CEDRIC THE ENTERTAINER LIVE IN DETROIT

Sound Board Theater
2901 Grand River Ave.
Detroit, Mich.

Dec. 27

8 p.m.

Admission: Tickets start at \$78

Best known for his gut-busting stand-up comedy, as well as his beloved roles in films such as "Madagascar," "The Original Kings of Comedy," "Intolerable Cruelty" and more. Come see him in his element at the Sound Board Theater for a night you won't forget!

SOUND BOARD THEATER

2901 Grand River Ave.
Detroit, Mich.

Dec. 27

8 p.m.

Admission: Tickets start at \$78

Best known for his gut-busting stand-up comedy, as well as his beloved roles in films such as "Madagascar," "The Original Kings of Comedy," "Intolerable Cruelty" and more. Come see him in his element at the Sound Board Theater for a night you won't forget!

TRANS-SIBERIAN ORCHESTRA | CHRISTMAS EVE AND OTHER STORIES

Little Caesars Arena
2645 Woodward Ave.
Detroit, Mich.

Dec. 28

3 p.m. & 8 p.m.

Admission: Tickets start at \$49.50

Making their return to Detroit at Little Caesars Arena, Trans-Siberian Orchestra is bringing their long-awaited Winter Tour 2019 "Christmas Eve and Other Stories." Starting back in 1999, the group began their signature musical formula to a show of about 12,000 attendees. Since then, they've played for millions of fans across the globe.

COME ENJOY THE SHOW!

Cirque du Soleil AXEL
Little Caesars Arena
2645 Woodward Ave.
Detroit, Mich.

Jan. 2 to 5

Thursday & Friday 7:30

p.m.; Saturday 3:30 p.m.,

7:30 p.m.; Sunday 1 p.m. & 5 p.m.

Admission: TBA

Little Caesars Arena is welcoming Cirque du Soleil in The District Detroit, along with AXEL, a fresh and electric encounter with world-class ice-skating and breathtaking acrobatics. Sparks will fly as Axel falls for the alluring Lei. Side-by-side they take off on a fast-paced adventure vibrant and fanciful world to reclaim the stolen light from the mystical Vi. Will Axel manage to find his voice and fulfil his destiny?

BLITHE SPIRIT

Meadow Brook Theatre
378 Meadow Brook Rd.
Rochester, Mich.
Jan. 8 to Feb. 2
Showtimes vary
Admission: \$36 to \$46

Noël Coward's "Blithe Spirit" features Charles Condomine, a prosperous novelist who has invited to his lavish estate to witness a séance, in the hopes to debunk that which he believes to be superstitious poppycock. Little does he know, he has invited a very real medium to conduct the ritual; and in doing so, unleashes the spirit of his first wife upon the house. The play is full of bright charm and sharp wit, and is sure to leave audiences laughing from beyond the grave.

PLYMOUTH ICE FESTIVAL

Downtown Plymouth
Penniman Ave.
Plymouth, Mich.
Jan. 10 to 12
Friday 5 to 10 p.m.; Saturday 10 a.m. to 10 p.m.; Sunday 10 a.m. to 6 p.m.
Admission: Free

The already beautiful downtown Plymouth area is housing an even more beautiful world-class festival, one that is fun for the entire family. Enchantingly intricate ice sculptures frame the streets as passerby crunch on caramel corn and chug their hot chocolate. If your tastes are a bit more hardcore, chain saw duels and interactive carvings are available as well.

STOMP

Macomb Center for the Performing Arts
44575 Garfield Rd.
Clinton Township, Mich.
Jan. 11
3 p.m. & 7:30 p.m.
Admission: Pit/Premium \$64.50; Gold Circle/Wings \$58.50; Front House/Balcony \$52.50; Rear House/Mild Balcony \$50.50; Upper Balcony \$48.50

No dialogue. No instruments. Only an octuplet of performers and their brooms, their garbage cans, their Zippo lighters, their match boxes and anything else that's not a traditional instrument. For over 25 years, STOMP has been mesmerizing crowds by creating incredible rhythms using ordinary objects. Come and enjoy an experience unlike any other.

FIRE & ICE FESTIVAL

Downtown Rochester
East Third St. & Water St.
Rochester, Mich.
Jan. 17 to 19
Friday 5 to 9 p.m.; Saturday 10 a.m. to 9 p.m.; Sunday 9 a.m. to 5 p.m.
Admission: Free

Come along for a weekend of winter frolic and play at the Fire & Ice Festival! Watch fireworks light the skies, much on warm food, be at ease in a horse-drawn carriage... oh, and don't forget to roast some s'mores before the night is over!

SHEN YUN PERFORMING ARTS

Detroit Opera House
1526 Broadway St.
Detroit, Mich.
Jan. 17 to 26
Show times vary
Admission: \$160, \$150, \$120, \$100, \$80

Classical Chinese dance is an incredible art capable of bringing legends to life, making this possible is Shen Yun, pushing the bounds of the performing arts, with a spectacular array of costuming, backdrops and an orchestra of unparalleled prowess. Prepare yourself to experience a truly breathtaking performance!



Poster Sale

December 2 - 6, 2019
Lower Level, VisTaTech Center

Monday - Thursday - 9:00 a.m. - 8:00 p.m.
Friday - 9:00 a.m. - 5:00 p.m.

Posters priced as marked.

Movies
 Anime/Cartoons
 Music
 Famous landmarks
 Art prints
 Famous people
 Animals
 Landscapes
 and more

For more information, contact the Student Activities Office at 734-462-4422.



Student Activities Board Presents

TIE DYE PARTY

Bring your own white clothing or a shirt will be provided.

RSVP by 11-27-2019 to sc.sab@apps.schoolcraft.edu or sign up in the Student Activities Office. Please include name and shirt size.

To participate, you must donate a toy. Donations go towards Toys for Tots.

December 5
2 pm-4 pm

Lower Waterman, VisTaTech Center
Conference Room E

For more information, contact the Student Activities Office at (734) 462-4422.

LET US HELP STOP

HUNGER

According to The College and University Food Bank Alliance, 48% of college students qualified as food insecure in a survey they administered on 34 different college campuses. 20% of these college students said they, or a household member, went a whole day without eating anything because there was not enough food.

SCHOOLCRAFT COLLEGE STUDENT FOOD PANTRY

Share Joy

THE 'WAYNE COUNTY FAMILY CENTER, a shelter in Westland, is currently "home" to several families, including 82 children. As the temperatures drop, this number will grow. We invite you, your class, your department, or your group of friends to support the Center this holiday season with gift bags for the homeless children and teens.

1. Contact Anna Maheshwari (amaheshw@schoolcraft.edu, ext. 7188) to find out the recipient's gender & age.
2. Pick up free holiday gift bags from Anna Maheshwari's office (LA 543) or create your own.
3. Shop for gifts valuing \$25-\$30 in total. We suggest a toiletry, something new to wear, something healthy to eat (a snack or treat), and something fun. (Please include batteries if a toy needs them.)
4. Place the gifts in the bag(s), and attach a tag so we know the gender and age of the recipient, e.g., "13-year-old girl."
5. Please deliver to Anna Maheshwari, LA 543, no later than

Monday, December 9th

Volunteers will wrap the gifts and deliver them to the shelter the following week. Gift bags may also be dropped off in the Liberal Arts Dean's office, LA 431.

*In this life we cannot do great things.
We can only do small things with great love.*

— Mother Teresa

Be the change you want to see in the world.

— Mahatma Mohandas Gandhi

For more information, contact
• Anna Maheshwari, ext. 7188
• Mary Rader, ext. 4765 (Radcliff)



Supported by the Liberal Arts Division, the Student Activities Office, and the Honors Scholars Program.
Any extra gift items will be shared with Wayne County Family Center or First Step.



WHAT WE DO?

The Schoolcraft Food Pantry, aims to help the needy by gathering donations and holding fundraisers to keep the food pantry stocked on campus. Any student enrolled at Schoolcraft that is in need, can access the pantry which is located in Room 256 of the Student Activities Center.



WHAT YOU CAN DO?

People who would like to participate can give instant food like canned goods, noodles etc. or monetary donations of any amount, or give a helping hand and join us at our fundraisers. Instant food donations can be placed in any of the donation bins around campus.



WHAT WE CAN DO?

We believe, that with our little deeds, we can step by step help reduce the number of food insecure people on campus.



THINK WE CAN DO THIS TOGETHER?

Visit The Student Activities Office for more info.
or Contact (734) 462-4422



GO To Board Game Club

GAME KNIGHTS

Thursday, November 14

Bring your own Board Game
Bring a board game to share with others.

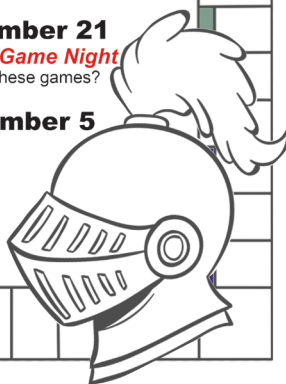
Thursday, November 21

Deception & Mystery Game Night
Can you fool your friends in these games?

Thursday, December 5

Comedy Game Night
Laugh your cares away!

7:00 p.m.
Lower Waterman
VisTaTech Center



Schoolcraft College

For more information, contact the Student Activities Office at 734-462-4422.

On October 21st, a caption printed in the article 'More than a dream' stated that Tamim Mohammad-Nayim

is an aspiring language professor. We would like to retract that caption and correctly state that Nayim is an aspiring Software Engineer.

We messed up...



OPINIONS



Schoolcraft
College

Editorial Staff

Chantele Fox
Editor-in-Chief

Christian Hollis
Managing Editor

Josiah Thomas
News Editor

Madison Ling
Campus Life Editor

Kevin O'Neil
Arts & Entertainment Editor

TBD
Sports Editor

Evan Cerezo
Layout & Design Editor

Matthew Armstrong
Production Assistant

Clarisa Russenberger
Photo Editor

Alex Zuccarini
Webmaster/Marketing Assistant

Armando Saucedo
Videographer

De'Ernest Johnson
Advertising Manager

Staff
Ben Bolstrum
Marvin Poindexter
Elyse Salmon

Rena Laverty
Connection Adviser

Todd Stowell
Advertising Adviser

Board of Trustees

Brian D. Broderick
Chair

Carol M. Strom
Vice Chair

Joan A. Gebhardt
Secretary

Terry Gilligan
Treasurer

Gretchen Alaniz
Trustee

Dillon Breen
Trustee

William P. Erwin Jr.
Trustee

Conway A. Jeffress
President

High School vs. College

It is finals season! We're all cramming everything we've learned this semester to this year out. However, let's take a moment for the people experiencing finals for the first time to compare and contrast what the experience at college is like versus high school.

High school was a little more intimate than college; with things like close friendships with teachers, smaller body count and students who've known each other since preschool are all things that have been lost with the transition to college. Everything is alien to new coming students. Old friends are gone, everyone and everything is new and strange, making the whole identity of the college not as solid, not as opaque.

College is far more relaxed when it comes to making friends. These friendships can sometimes fizzle out with distance, but will rekindle later when a class is shared. Sports games, extracurricular or even visiting the Student Activities Center is a good way to find a group to hang out with.

Moreover, when comparing classes in high school to that of college, the biggest difference is that the length of college classes are longer than those taken in high school. Professors provide more time to complete assignments, giving the illusion that it will seem easier than high school. With that being said, the pressure to do well on your assignments and preparing for finals is much higher being that your GPA is affecting far more seriously.

In high school, many students hated lunch from the cardboard pizza to the limited salad bar, all of which was a planned menu providing you with limited options. Contrastingly, students at Schoolcraft are lucky to have great places to eat on campus. Henry's is always a good bite, but if you've found yourself in the Jeffress Center or Physical Education building, you have a more healthy option.

Parking in high school compared to that of Schoolcraft was far more simplistic. There were fewer students and employees, which meant a smaller parking lot with more available spots. High School parking is not as chaotic as college parking in the regard that Schoolcraft is currently undergoing building developments and upgrades which have since carried over into the parking lot of the Applied Sciences building. Even though there are days when it's not as bad, the parking still overflows into the ViStaTech lot which can be more of a hassle on the days when there is an event being held, but sometimes that's OK if you both work and study here.

Furthermore, student employment is perhaps one of the biggest differences. High school students, given their age, are pretty limited to places they can work. As such, many work in fast food or retail while others did not work at all. When you get to college, there are multiple areas of student employment from Student Activities to the Physical Education building. Work study programs are very beneficial to college students and to the school itself.

Overall, the experience in college is much more lax than in high school. We have quite a bit more freedom here in comparison so make sure to appreciate that while you study for your finals.

I'm not good at goodbyes



CHRISTIAN HOLLIS

Managing Editor
christian.hollis@apps.schoolcraft.edu

I am both excited and sad to say that my time at Schoolcraft College has come to an end. I will be graduating from this wonderful college this month and I leave with wonderful memories, a strong education and an incredible experience.

For the last two years, I have dedicated my life to the Schoolcraft Connection. My time here

has truly changed my life. The Connection pushed me toward my passion and the current trajectory that I'm on in life.

I have built connections with dozens of instructors, students and staff. I am grateful for everything I have learned things like the importance of journalism and how it affects our culture from professor Ditouras's Mass Media class, to how to be a better person from my time working with Jennifer Cook in the Cage at the Physical Education building, and how to be the best possible employee - while staying human - from JoAnne Stadnicar at Career Services. But the most important thing I have learned is how to be a leader from the advisers of the Schoolcraft

Connection, Rena Laverty and Todd Stowell.

I stumbled into this office just because I wanted to write, but never did I think I would be in the position of Managing Editor or Editor-in-Chief. It is a lot of responsibility. I had to learn how to manage the group while staying on top of deadline, relentlessly searching for errors in the editing process, being responsible for my own articles and lead a major rebranding. I did this all while taking classes and working another job.

Thankfully, I had Rena and Todd for all the times I was overwhelmed and they guided all of us, editorial staff, to our success.

In 2018, I was honored to be recognized as the Student Employee of the

Year for my work at this publication, but I would not have that honor if it weren't for the staff here. Everything we ever do her at the Schoolcraft Connection, we do it as a team and we all commit to do what is best for the paper.

I stepped away from the Schoolcraft Connection for a semester, but I believe coming back is one of the best decisions I have ever made. Now, I am completely handing this passion of mine off to the new staff. I leave in confidence that current Editor-in-Chief, Chantele Fox, will continue to thrive next semester in her role of leadership.

I'm proud to be an Ocelot - and I am thankful to you, our loyal readers for staying connected.

The Schoolcraft Connection is the award-winning, student-run newspaper published semi-monthly as an educational experience by the students of Schoolcraft College, 18600 Haggerty Road, Livonia, Michigan, 48152-2696. The editorial offices of The Schoolcraft Connection are located in the Student Activities Office on the lower level of the Waterman Campus Center.

The Schoolcraft Connection is a member of the Michigan Community College Press Association, the Colombia Scholastic Press Association, College Media Advisers, the Student Press Law Center, Community College Journalism Association and the Society of Professional Journalists.

Editorial Policy: Unsigned editorials represent the majority opinion of the Editorial Board. Signed columns solely reflect the opinion of the writer. The Schoolcraft Connection abstains from criticism of, or discrimination against any person on the basis of race, creed, color, sex, age, marital status, handicap, national origin, or sexual orientation.

The Schoolcraft Connection is a student forum and is self-monitored. We reject censorship and support a free student press. Material in The Schoolcraft Connection may not be reproduced in any form without prior written consent.

The Schoolcraft Connection corrects all errors of fact. If you have discovered an error, please contact the Editor in Chief, 734-462-4422, or sceditor@schoolcraft.edu.



Check out a video essay by Videographer, Armando Saucedo, about how the marching arts can change lives; featuring two interviews with music teachers and Editor-in-Chief, Chantele Fox. Visit the Schoolcraft Connection YouTube channel today!



**10 Different Taps
Sample Flights
Pints • Cans
Howlers
Growlers**

CHECK US OUT ONLINE!

schoolcraft.edu/brewpub
schoolcraft.edu/beer

facebook.com/AmericanHarvestBrewpub

AmericanHarvestBrew@schoolcraft.edu

Indie games vs. AAA games



MATTHEW ARMSTRONG

Production Assistant

Matthew.Armstrong1@apps.schoolcraft.edu

If you are someone who enjoys video games whether it be casual or hardcore, you probably know some games by name alone such as “Halo”, “Call of Duty” or “Overwatch”. Now how about some other

games such as “Enter the Gungeon”, “Hollow Knight” and Into the Breach? These games may not be as known to some people, but these would be in the category of indie games.

What are indie games?

Well, they’re created by studios that develop games with small development teams or sometimes one person to release a game without the financial support of publishers. This development is very different from the process in the respect that AAA games are developed by a large company consisting of more than a few hundred employees or

so. Furthermore, AAA companies typically have financial backing from a publisher or whoever they work with to be able to fund the gaming process, leading to bigger budget games that can be sold for a higher price to make ends meet when the game is released.

Now, cost and development aren’t the only things that distinguish the difference between indie games and AAA games different. One of the biggest differences between the two is that of artistic choices and length. Since indie companies have a lower budget, they usually shorten the length of the game allowing for

more time to develop the gameplay itself, making it something special; therefore, they rely more on their art style as a selling point as well.

Since AAA have the funds, they can get away with lengthier games and offer more features. Does that make them better?

The answer is yes and no. While some people like some AAA studios and what they offer, others think they have become too greedy and too business oriented. With indie development, they rely on making sure the games they come out with are the best they can make them with what they have, so the focus is on honing their

craft and making sure the audience they have is going to appreciate their hard work.

However, it’s up to you to decide which you prefer.



Photo courtesy of pinterest.com

Shovel Knight, from the aptly named “Shovel Knight”, is a popular indie gaming mascot.



JOSIAH THOMAS

News Editor

josiah.thomas@apps.schoolcraft.edu

Having worked retail for nearly five years, all of which involved working during holidays, I know how difficult and downright crazy retail gets because I’ve been in the trenches myself.

Never mind the huge crowds that can literally span the length of a football field; the real

struggle of retail is trying to help customers through issues that are beyond their control. With a few exceptions, cashiers are in low-paying, monotonous jobs and if you can brighten their week by putting in a good word to their manager, it does help a lot.

Take cashiers, for example. They don’t get paid much more than minimum wage, they work four to eight hours every day since they were hired and they have to take every form of criticism possible while staying professional.

I get it, not getting

the discount you shopped three hours for is incredibly frustrating. Anger is a strong motivator and some criticism may be warranted, but very few people go out of their way to praise because it’s hard to find nice words when a coupon doesn’t work or a sale item doesn’t ring up the right way.

Surveys, reviews from sites like Google and Yelp! can be valuable sources of feedback, but bear in mind that a cashier’s performance is measured on all of these things. So, when one person

complains that worker needs 10 people to say good things to stay out of the doghouse.

In that situation, the odds are heavily stacked against them. People usually don’t leave positive feedback when they’re happy but the cashiers really need more of that to offset the negative feedback that they get, so if you thought someone did a great job, please say so!

When a customer raves about the good job a cashier does, it may seem like a small thing but it can affect their lives for the better. More than

just being recognized at work, a point toward promotion or having a nice thing to put on a resume, it really can make life better for them. Whether it boosted their self-esteem, brightened their mood or made their day better, you helped to make the world a better place. Even if you don’t have time to volunteer with the Salvation Army or St. Leo’s, at least give your cashiers the gift of kindness.

The customers next in line will benefit from that act of kindness you for the person who cashes out your order.

Seasons of gratitude

Freshman's review of college



KEVIN O'NEIL

A&E Editor

kevin.oneil@apps.schoolcraft.edu

Time for one nasty analogy: Imagine you've chosen your very own destination. Maybe it's the Great Alps, Mecca, the Amazon Rainforest, or maybe even the Moon, Mercury, Saturn and the stars beyond. Whatever destination you choose, in

order to start your journey you must board a bus - but not just any bus, one of the Great Busses; vehicles that can be so massive as to hold small cities within themselves. Your first bus was a rather small one, relatively speaking, with not even 1,000 people filling the seats by your fourth and final year aboard. Yet, that's precisely what makes the ride all the more intimate with your bus mates, kindly attendants and sage-like storytellers.

But then comes the time for you to cross the sea, to carry on through your journey you board a behemoth of a boat, easily twenty times the size and

population of your meager bus, but something's not quite right. Its dull grey-blue paint is rusty and faded, nothing like the glamorous greens and golds of your little bus before. The boat is so large and the people so plentiful that they split themselves into groups, and even then your shipmates are distant from each other. The crew wear their uniforms sloppily - coats unbuttoned and stitches long frayed - as they work less as a team, and more on each of their individual tasks in a mutually shared plane of existence.

The captain can rarely be seen, but when he is spotted on the balcony of the captain's quarters,

he seems like he's from a different world entirely, shiny shoes and a three-piece suit, all too-bright and all too-clean. Not exactly the cruise ship you were expecting.

This is more or less how I feel about my own transition from high school to college. I'm definitely on a bigger and more powerful vehicle to get to where I want to be in life, but the people operating it - being mainly the professors - seem considerably dispassionate about the boat that's keeping them afloat.

Classmates are timid and afraid, usually only speaking and bonding when forced to or through

shared complaints of subpar instruction. In high school there was a sort of love for the place that is almost completely absent in college as of this moment.

Is this normal, for a college to miss? Is this right, for a college to lack?

Maybe I'm in the minority here - maybe I'm one of the few who've had better high school environments than college environments.

Well, maybe you could tell me your thoughts by tweeting at the official Schoolcraft Connection Twitter account, @SchoolcraftNews, where we can talk about where we've come from and to where we might be sailing.



MADISON LING

Campus Life Editor

madisonling307@yahoo.com

'Tis the season for snow again and with cold weather comes close quarters and an invisible fiend that everyone does their best to avoid: Influenza.

Chills, fever and aches are only a few of the woes experienced once infected, but it's only the beginning.

What was once a master escape plan for the bug, turns into what seems like a battle to survive and to remember what being healthy is again.

This leads many of its victims to question whether they should vaccinate themselves, especially with controversial myths that complicate the issue. In fact, people should vaccinate themselves because it acts as a protective mechanism and it minimizes the effects even if caught.

Vaccination is a beneficial tool for everyone involved because it aims to protect people who are likely to

have severe complications from the sickness, such as pregnant women, young children and the elderly.

According to the Centers for Disease Control (CDC), vaccination for pregnant women protects the baby during gestation and even for months after birth. This is significant because it was estimated in 2018 that the rate of hospitalization was reduced by up to 40 percent during a six-year study, beginning in 2010 and concluding in 2016.

It's also imperative that it protects infants for after they're born because children have to be at least six months old before

they can receive the flu vaccine. This can leave them vulnerable if they are exposed to the virus at day care or in their own homes. By vaccinating herself, the mother will produce the antibodies necessary to fight the virus if it enters the body. The mother will then pass these on to the child via the placenta during the pregnancy and will continue to do so after birth if she chooses to breast-feed.

Furthermore, the vaccine is also effective in regards to protecting young children since it prevents the sickness from becoming severe and

causing complications that could lead to intensive care hospitalization.

As much as we all would prefer the vaccine to be completely effective prevention for sicknesses, nothing is guaranteed in medicine yet. What we can do is take every precaution possible to protect ourselves and the people around us by receiving the vaccination, washing our hands and being mindful of potential exposure.

After all, one of medicine's greatest values is to protect vulnerable populations and take preventative measures whenever harm is a possibility.

Ally with vaccination



CLARISA RUSSENBERGER

Photo Editor

clarissa.russenberger@apps.schoolcraft.edu

Talking Trash

it didn't seem as though we had even dented the surface of this problem.

Since then, I have been trying to make my life more sustainable and I try to influence others to do the same. So, when I realized that my own school has little initiative regarding eco-friendliness, I was concerned.

Now, many people have tried to refute my argument by pointing at a recycling bin or the electric car chargers outside and saying- look, we're eco-friendly. However, one recycling bin every few thousand feet and a handful of electric car chargers that are rarely used hardly meets the mark.

Schoolcraft lacks even the

bare necessities to call itself an eco-friendly school.

Another look to Henry's and Schoolcraft's seeming indifference to its environmental impact is evident. The to-go containers are made out of Styrofoam, a product that can sit in a landfill for centuries and is not recycled by Clean Lites, the company Schoolcraft recycles with. Students take their food to-go whether or not they are eating in the cafeteria, making Henry's Styrofoam consumption deplorable. If Schoolcraft chooses to use Styrofoam in its cafeteria, it needs to take responsibility and make sure said Styrofoam is properly disposed of. Clean Lites refusal regarding the recycling of Styrofoam does

not give Schoolcraft an 'out.' Schoolcraft needs to find a recycling company that can process Styrofoam, or if that is unreasonable, the use of Styrofoam in the cafeteria should be stopped altogether.

I wrote a letter with very similar points to Dr. Jeffress a few weeks ago and commend him for his quick response. However, I think it is important for all students and staff to understand the necessity of a more eco-friendly school, and the ease at which we can attain said eco-friendliness. Something as small as using our own water bottles, or putting recycling bins in classrooms have an enormous impact.

Back in late August, I attended the presentation

by president and CEO of Consumers Energy, Patti Poppe gave on campus about Consumers Energy. She discussed all of the green initiatives her company is taking. It is amazing that her company is taking these initiatives, however cleaning our planet can not only be left to large companies and schools. Therefore, I cannot place the blame entirely on Schoolcraft College. Whether it be using refillable cups for our drinks, or making sure we know what is recyclable and what isn't, the responsibility falls on every person to leave the earth in a better place than how they found it.

For more information on recycling in Michigan check out recyclemichigan.org. For a more entertaining lesson, check out the Raccoon Recycling Squad on YouTube.



**Schoolcraft
College**

LEARNING SUPPORT SERVICES
Success Starts Here

A Message from the Learning Support Services

It is difficult to minimize the benefits of collaborative learning. At Schoolcraft's Learning Support Services, students are able to find various resources that are built on this foundation. In the Learning Center (LC) students will find a team of peers and volunteers who are dedicated to student

empowerment. This team will provide continuous support that is catered to both the goals of their fellow student and the advancements that they seek. One might find our Peer Assisted Learning (PAL) Leaders. PALs are students who have been recommended by previous instructors to facilitate a group study session in various locations across the campus. In addition, the LC is home to tutors who use their study skills and course comprehension to deepen their peers' understanding of course material through the use of structured questioning.

Students will also find the Peer Consultants of the Writing Support Studio. These are individuals who work with students one-on-one in order to perform a structured peer review that is centered around the visitor's primary concerns. All of these services are also available online! Students can also seek support within International Learning Support or through Academic Success Coaches and TEAS Prep Mentors.

Above all else, Learning Support Services seeks to provide academic support. We understand how valuable support can

be as students approach their academic success and engagement on campus. We focus on providing this support at times where it is likely the most needed. Student success workshops, such as our pre-semester math workshop Jumpstart! and final exam review sessions held during Exam-a-Rama, are just two examples of what we have to offer throughout the year. This year Exam-a-Rama takes place December 5, through Saturday, December 7! Throughout this event our team will be reviewing study strategies and final exam packets, both in-person

and via online webinar! On December 5 services will be available from 8:00 PM until midnight. On both December 6 and 7, the event will be held from 12:00 PM until 4:00 PM. We invite you to join us as we prepare for the end of the semester in subjects such as math, biology, physics, chemistry, and writing! For more information, please visit the Learning Center in the Bradner Library's L119, where you will meet our team of Service Desk Representatives. We hope to see you soon!

Best Wishes,
Learning Support Services

OCELOT OPINIONS

Interviews & Photos by De'Ernest Johnson & Armando Saucedo | Staff Writer & Videographer

@SchoolcraftConnection:
Who is your role model and why?



Reena Siddiqui

Major: Engineering

"My mom cause she got an arranged marriage and went to school to get her masters while taking care of her kids."



Carl Richards

Major: Undecided

"My uncle because he take of me most of my life and was super successful with his career choices."



Yamille Hernandez

Major: Science

"Steve Erwin because he made me appreciate wild life and the environment he was also a great guy."



Hunter Templin

Major: Undecided

"My step-dad because I had a rough childhood growing up and he came in and saved me so I want to make him proud."



Everett Kremm

Major: Cyber Security

"Bill Gates and Steve Jobs because of my major mostly. Without their work I would not have one. They practically invented my major."



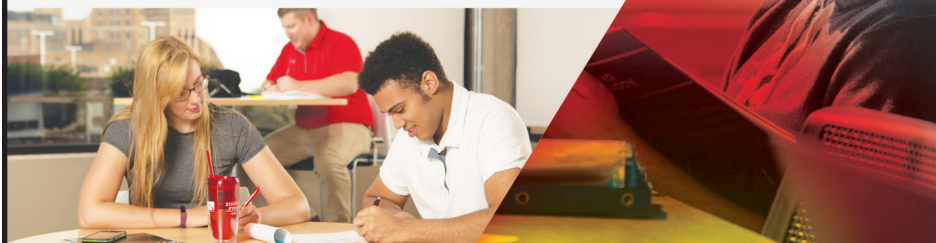
Marvin Poindexter

Major: Graphic Design

"On a celebrity level, I have to say Big Sean, Chris Brown and Justin Bieber because they made me want to better myself as an inspiring artist no matter what I've been through."

MADE TO MOVE ONWARD AND UPWARD

Your future, your opportunity, your next move. Find it all here. Ferris offers flexible, convenient classes in Livonia and online. Transfer up to 90 Schoolcraft College credit hours. Meet with an advisor now to maximize your transfer credit and move Ferris Forward.



FERRIS STATE UNIVERSITY

LIVONIA

Ferris State University is an equal opportunity institution. For information on the University's Policy on Non-Discrimination, visit ferris.edu/non-discrimination. 20191021

M

DEARBORN

December is On-Site Admissions

WE MAKE IT EASY TO TRANSFER!

Meet with an admissions counselor who will review your application and transcripts and provide you with an admissions decision. During your appointment, you can learn more about our academic programs, scholarships, financial aid and housing options.

umdearborn.edu/onsite
313-593-5100

GO BLUE – GO DEARBORN!

Sparkle and Shine it's Christmas time!

Specially Priced
\$99



Reg. Price: \$130

Reg. Price: \$125

It's the Most Wonderful
Time to get **Engaged!**



GARDEN CITY
29317 Ford Road at Middlebelt
734.422.7030

orinjewelers.com

ORIN
JEWELERS

NORTHVILLE
101 East Main Street at Center
248.349.6940

AMERICAN GEM
SOCIETY

DIVERSIONS

King Crossword

ACROSS

- 1 Temperate
5 Owns
8 Lovers' quarrel
12 Sandwich treat
13 Final (Abbr.)
14 Small combo
15 "Desperate Housewives" actress Eva
17 Cincinnati team
18 Ingratiate
19 Warehouse pile
21 Pigpen
22 Deck for a 10-count
23 Wife of Saturn
26 Embrace
28 Become one
31 Addict
33 Shell game item
35 "My Heart Will Go On" singer
36 Ringworm
38 Egypt's boy king
40 Toss in
41 Transmit
43 Afternoon party
45 "Jane Eyre" author
47 Do, re, mi, fa, sol, la, ti, do
51 Mongolian

| | | | | | | | | | | | | |
|----|----|----|----|----|----|----|----|----|----|----|----|----|
| 1 | 2 | 3 | 4 | | 5 | 6 | 7 | | 8 | 9 | 10 | 11 |
| 12 | | | | | 13 | | | | 14 | | | |
| 15 | | | | | 16 | | | | 17 | | | |
| 18 | | | | | | | | 19 | 20 | | | |
| | | | 21 | | | | 22 | | | | | |
| 23 | 24 | 25 | | 26 | | 27 | | 28 | | | 29 | 30 |
| 31 | | | 32 | | 33 | | 34 | | 35 | | | |
| 36 | | | | 37 | | 38 | | 39 | | 40 | | |
| | | 41 | | | 42 | | 43 | | 44 | | | |
| 45 | 46 | | | | | | 47 | | | 48 | 49 | 50 |
| 51 | | | | | 52 | 53 | | | | | | |
| 54 | | | | | 55 | | | | 56 | | | |
| 57 | | | | | 58 | | | | 59 | | | |

- 2 tent
52 Great bliss
54 Mideastern potentate
55 Fields or Butterworth
56 Villain's look
57 Fix, in a way
58 Crafty
59 Young woman
5 "Get a move on!"
6 Foreman foe
7 Pile
8 Wandered off
9 Transvaal city
10 Staffer
11 Pitch
16 Inauguration recitation
20 Ewe's mate
23 No longer stylish
24 Omega pre-ceder
25 Brain's stimulus receptors
27 Understand
29 Deity
30 Conclude
32 Space flight conclusion
34 Job for a medical examiner
37 Pismire
39 Georgia —
42 Considers
44 Coral circle
45 Tourney situations
46 Derriere
48 Vicinity
49 Competes
50 Corn spikes
53 Web address

DOWN

- 1 Double agent
2 Press
3 Give for a time
4 Venetian magistrates

**Interested in
advertising with
us!?**

**Contact De'Ernest Johnson,
Advertising Manager, at
734-462-4422 or email
at [sc.connection@apps.
schoolcraft.edu](mailto:sc.connection@apps.schoolcraft.edu)**

**Answers to the
diversions can
be found on
our website at [s
choolcraftconnection.
com](http://schoolcraftconnection.com).**



Zoup!
EATERY
20065 Haggerty Rd.
Northville, MI
zoup.com

FREE SMALL DRINK
WITH A PURCHASE OF \$8 OR MORE

Redeemable in-store only. Must present Schoolcraft College ID card when ordering.
Redeemable through 12/02/19. Cannot be combined with any other offer.

MAGIC MAZE ● — CHARGE

G O E V I T I S O P L J H E C
A X V T R T E P E C N A N I F
N C A V A L R Y L R J N H F P
D B Y K K X A V R E V O C T U
E L E C T R O S T A T I C R D
P O I M T K I G E D B S C Z E
X R W X U T R N I N O S R E P
T Q E O N L C A R R Y I N G M
F O E E R F J I G F D M C A U
N Y X W V T S H T P E D R P R
O N L K J G N I L D N A H I T

Find the listed words in the diagram. They run in all directions forward, backward, up, down and diagonally

- Admission
Carrying
Cavalry
Cover
- Depth
Electrostatic
Finance
Free of
- Handling
No extra
Person in
Service
- Take
Trickle
Trumped-up

Weekly SUDOKU

by Linda Thistle

| | | | | | | | | |
|---|---|---|---|---|---|---|---|---|
| | 3 | | 8 | | | | | 7 |
| | | 6 | | 9 | | | 2 | |
| 8 | | | | | 7 | 6 | | |
| 1 | | | 6 | | | | 9 | |
| | | 5 | | 7 | 4 | 1 | | |
| | 9 | | | 2 | | | | 4 |
| | | 3 | | | 6 | | | 1 |
| 2 | | | | 1 | | 7 | | |
| | 6 | | 3 | | | | 5 | 9 |

Place a number in the empty boxes in such a way that each row across, each column down and each small 9-box square contains all of the numbers from one to nine.

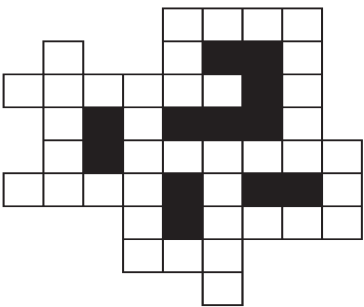
DIFFICULTY THIS WEEK: ♦♦♦

♦ Moderate ♦♦ Challenging
♦♦♦ HOO BOY!

© 2019 King Features Synd., Inc.



- ♥ IDM
- OLMARN
- ♥ EDIMA
- ♥ MPUL
- LRNDID
- ♥ DSA
- ♥ AMSE
- EPGRU
- ♥ ALG
- SPIDRA
- BELLI
- ♥ ARDE



Unscramble these twelve letter strings to form each into an ordinary word (ex. HAGNEC becomes CHANGE). Prepare to use only ONE word from any marked (♥) letter string as each unscrambles into more than one word (ex. ♥RATHE becomes HATER or EARTH or HEART). Fit each string's word either across or down to knot all twelve strings together.

SCHOOLCRAFT COLLEGE FITNESS CENTER



Instagram
scfitnesscenter



Like us on
Facebook



Follow us on
Twitter @scgetfit

GET FIT FOR FREE!

Free for Credit Students!

Accomplish your fitness goals for 2020!

Fitness Center re-opens on
Thursday, January 2nd @ 7am after the Holiday break!

Hours for the first week back, January 2 & 3, 2020
Week Days, 7am-7pm • Saturday, 7am-3pm • Sunday, 10-4pm

Normal hours begin January 6th
Monday-Friday • 5:30 a.m.-9 p.m.
Saturday-7 a.m.-5 p.m. • Sunday-10 a.m.-4 p.m.

Conveniently
located in the



Schoolcraft
College

Physical Education
building

AMENITIES:

- Free towel service
- Squat racks, dead-lift platforms, free weights, and cardio machines available.
- Lockers available
- Full locker room and sauna
- Monthly Incentive Programs, Challenges and more!



For more
information

The Fitness Center has lots of fun fitness programs and challenges ready for you in 2020. Come check it out!
Call: 734-462-4348 or Visit: www.schoolcraft.edu/fitnesscenter

Schoolcraft College
FITNESS CENTER