

Culinary shining star



Photo by Jess Michael

Sous Chef Allison White won the American Culinary Federation National Student Pastry Chef of the Year this past July. White shown here, poses with her awards and winning dishes. Check out her story in News on Page 2.



Safety with Public Access: Narcan available on campus

See Campus Life Page 8



Poor Bob! Check out our review on the new Beetlejuice Beetlejuice movie

See Arts and Entertainment Page 11



Kicking into gear! Check out our fall sports schedules and cheer on your Ocelots!

See Sports Page 18

NEWS

From Noodles in Company chef to National Student Pastry Chef of the Year

JESS MICHAEL
EDITOR-IN-CHIEF



National Student Pastry Chef of the Year Allison White.
Photo by Izabella Allie

Inspiration can come from anywhere, writers can find it from a shower room (King, On Writing) or a chef can find it in a grandparent who gobbled any desserts she brought home. Recent Culinary Arts graduate Allison White was awarded the 2024 National Student Pastry Chef of the Year through the American Culinary Federation in July in Phoenix, Arizona.

Her journey began in 2013, when she was twelve years old, when her grandma signed

her up for the Kids on Campus; attending the cupcake decorating program. However, White's career journey didn't immediately start within the kitchens of the culinary arts program, but instead with graphic arts. White was dual enrolled with Schoolcraft and Specs Howard, earning degrees in graphic design and broadcast communications. While attending Schoolcraft she would walk past the culinary kitchen and gaze at the culinary students in their crisp white uniforms, wishing she could once again be in the kitchen.

During the pandemic, at eighteen, White was working for Noodles and Company. At that same time Michigan began offering the free tuition program called "Futures for Frontliners." White decided to take advantage of the program and made the career change enrolling into the Schoolcraft Culinary Arts program.

Cooking is something that White loves, though during the segment that covered baking and pastries with Chef Joseph Decker, who retired in April 2023. She found her inspiration through his teachings and realized she could express her love of art through unique desserts.

"I am artistic through my food, I get to create art that people get to eat, instead of reading the menu I designed," said White.

White found that feeding people is something she loves deeply. She remembers that before the passing of her beloved grandparents, she would bring home desserts for them. They were her dessert people and always encouraged her to enter the pastry program.

"Those two are the reason I am doing this [Culinary Arts and competitions]. I would bring them the desserts I made, they loved eating them," said White.

Her grandma, who passed one month

before she competed in regionals held at the Culinary Institute in Port Huron, Michigan, would always call White her shining star.

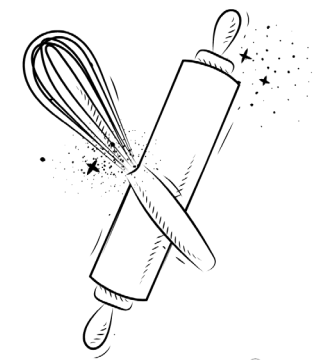
White most certainly proved she is a shining star when she won the nationals in Phoenix Arizona this past July, earning herself the title National Student Pastry Chef of the Year.

She won by creating a Sacher Torte made with pistachio shortbread, gluten free chocolate cake, an apricot mousse with a chocolate glaze and an apricot sorbet. White believes the winning dish though, was her Peach and Plum Strudel.

"The pastry dough was probably about eight feet long," said White.

During the competition she was surprised when she received the mystery ingredient, balsamic vinegar. That didn't stop her from finding inspiration to make a blueberry balsamic compote, adding to her dish a pecan cookie crumble along with a sour cream and brown sugar ice cream.

Behind the scenes, White faced great adversity with her cake layers for the Sacher Torte. The Friday before the competition, one item that was allowed to be premade was her cake layers. White received help from many resources on campus, one being the Welding Department in which Professor Coley McLean created custom cake pans for the flight from Michigan to Arizona. Unfortunately,



See 'Culinary shining star'

Page 3>

'Culinary shinning star' cont'd from page 2>

during the cross country flight, the cake layers lost their original density.

Accompanying White to Phoenix was her mentor, Chef Heather Moore, CMB, CEPC. When they arrived in Arizona, they opened the cooler to begin setting up the cart for the competition and discovered the layers took on an appearance of almost raw.

They came up with several possible plans including baking the cake layers in a toaster oven in their hotel room, making the cake layers in her one hour block she is given during the competition or contacting Schoolcraft President Dr. Cerny and taking him up on the offer that they had ironically joked about before leaving. Before leaving for the competition, White and Moore joked with Cerny that if anything happened, they could go to his home in Arizona.

Filled with hope, Moore made the call and asked if they could come to his home and bake the cake layers. "Dr. Cerny's wife came in clutch, she had everything I needed. They

really helped me out," said White.

Her grandparents and Dr. Cerny's family were not the only support and inspiration she had while preparing for nationals. Her parents, who are hard workers, always encouraged White to put her all into what she was doing.

The days before the competition, White's mother could be found in the Schoolcraft kitchens washing the dishes while she was honing in her skills for the upcoming competition. "She loves doing the dishes and that was great because I hate doing them." Her mother was there to show her support in any way that she could.

White's advice to all aspiring pastry chefs out there, "always give it 100 percent, don't ever think that you're at the best you're going



Sous Chef Allison White's dishes and awards accompanied with her medals. Photo by Jess Michael.

to be. Always keep learning, keep doing what you love."

One day, White hopes to work on Mackinac Island as an executive pastry chef. However, for now, she will spend the next year staying at Schoolcraft, working on her desserts. She will continue to work on pastries, working towards more certificates and one day earning the title master pastry chef.

International Student Organization
Invites you

WELCOME EVENT

**Tuesday September 24th
4.30 PM- 6PM
Lower VisTatech building**

Join us for a afternoon of fun and games

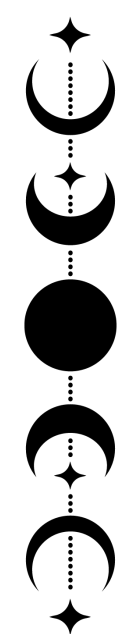
Food and drinks will be provided | Call Student Activities for more info
734-462-4422

WE'RE HIRING
NEW STUDENTS ARE WELCOME & ENCOURAGED TO JOIN!

- STAFF PHOTOGRAPHERS
- CAMPUS LIFE EDITOR
- CONTENT MANAGER
- GRAPHIC DESIGNER
- SPORTS EDITOR
- STAFF WRITERS
- NEWS EDITOR

SCHOOLCRAFT CONNECTION

CONTACT STUDENT ACTIVITIES AT 734-462-4422 FOR MORE INFORMATION.



New name, expanded service

Career Mentorship and Placement office aims to connect job seekers with employers

AMELIA CURTIS
STAFF WRITER

The goal of every graduate is to find a job in the field they have studied. However, sometimes, that can be a challenging task. Schoolcraft has made it a priority to assist students and the community in that journey.

This fall, Schoolcraft launched the Career Mentorship and Placement office, formerly known as Career Services, and moved the department to a new location. Prior to this launch, Career Services was a student resource for on-campus job opportunities and future career planning found in McDowell Center. Now located on the third floor of the Jeffress Center, room JC340, the office has taken on a whole new role for students and the community.

“We are trying to focus more on the end result of why students are pursuing college in the first place,” said Sharon Christian, Director of Workforce Mentorship and Placement, referring to the new focus of what the services are geared towards in the Career Mentorship and Placement Office.

Students at Schoolcraft have the freedom of choosing their interest of study at the college. Whether it is to get their preferred career, to change a prior career or even to meet a career goal by transferring onto a four-year university.

With that in mind the Career Mentorship and Placement has shifted its focus into two pathways, as resources for students and community members. The first focus, is to the mentorship of students while studying and placement for students post degree. Focusing on meeting each individual’s needs and working with them to create a specific plan that guides them

towards their personal goal. Mentorship, being one of the key aspects of the program, has been formed to gear students towards partnering up with and exploring different potential careers. This may look like students meeting with someone in their desired field once a month and learning about how they got to where the professionals are now.

Many people in the work field from many varying jobs are involved with mentoring students. This specific path of guidance builds connections between students as well as opens new connections in different areas of work. Building these connections through the program’s mentorship has led to local internships and job opportunities in the past.

Placement, another one of the program’s key aspects, focuses more on job placement, both in school and postgraduate for students. Office Staff will assist with resume and interview preparation, connections to recruiters and access to job fairs along with job boards on the college network.

In the surrounding community, many local employers can contact students from Schoolcraft offering them post-schooling job opportunities and internships throughout the year. Students who are working to plan out their future academic and career path, can make a meeting with the Career Mentorship and Placement office.

The Career Mentorship and Placement office hours of operation are Monday through Friday 9:30 a.m. to 5:00 p.m. and are meetings by appointments only for the time being. These services are free and open to everyone. All appointments are 30 minute time slots.

To schedule for in person, or remote meeting using Microsoft Bookings go to <https://outlook.office365.com/book/CareerServicesIntroductoryAppointment@schoolcraftcollege.onmicrosoft.com/>.

The Career Mentorship and Placement student resource helps everyone reach their goals for their academic and professional career. Make sure to take advantage of this career resource today.

For more information or questions regarding the services offered, call 734-462-4421 or email careerservices@schoolcraft.edu.

CAREER MENTORSHIP & PLACEMENT

- 1 CONNECT**
 Contact us via phone or email
- 2 TAKE CHARGE**
 Get the help you need to move forward
- 3 THRIVE**
 Begin your path to success
- 4 CONTACT**
careeradvantage@schoolcraft.edu
 734-462-4421

MORE INFO: [Schoolcraft.edu/careerservices](https://schoolcraft.edu/careerservices)

Career Mentorship and Placement Office hours of operations

Fall & Winter
 Monday – Friday
 9:30 a.m. – 5:00 p.m.

Livonia Main Campus
 Jeffress Center, Suite JC340
 734-462-4421



EARN YOUR FERRIS DEGREE IN LIVONIA

Earn your degree faster and more affordably through our special partnership with Schoolcraft College. This partnership offers a unique combination of Schoolcraft College and Ferris courses in Livonia and/or online, making Ferris accessible for students like you.

With full access to the Detroit Hub, you'll have all the support services you need to earn your Ferris degree locally and achieve your career goals.

FERRIS STATE UNIVERSITY

LIVONIA

LEARN MORE



CAMPUS LIFE

Be first to respond

Health and safety is in everyone's best interest connect job seekers with employers

JESS MICHAEL
EDITOR-IN-CHIEF

Even in the year 2024, and all the information about opioids and other drugs, we are still in the throes of a drug epidemic. According to the Health Resources & Services Administration's website (hrsa.gov), it is estimated that over 130 people die per day of an opioid related overdose. Many of those overdoses are teens and college aged individuals.

Access to Narcan has never been more important, with Schoolcraft realizing this; they took the initiative to keep our campus safe with the free Narcan distribution boxes. These boxes are available next to the automated external defibrillator or AED. The Rescue Boxes can be found at the following locations on campus: Trinity Sports Dome lobby near the Reception Desk, Physical Education Building main hallway near the AED, Vistatech Main Street hallway outside of Henry's near the AED, Vistatech Hallway near the Diponio Room, Lower-level Waterman/Student Activities area near the Food Pantry and the main hallway of the Manufacturing & Engineer Center near the AED, 13001 Merriman.

If you are unfamiliar with what Narcan is and what it does, it is a life saving nasal spray that helps open up the receptors by blocking the effects of the drug and restores the ability to breathe. Narcan provides detailed instructions on the box itself; while FAN has a couple three minute videos on how to administer as well.

Narcan is administered similarly like any other nasal spray, you put the nozzle in the person's nose and spray. If the person does not respond, you can spray a second dosage. You cannot overdose on Narcan and there are small side effects, such as headache. It is not dangerous and cannot harm animals or young children.

Schoolcraft Police Lieutenant Matthew Mayes, stated that he saw many drug related overdoses during his decades as a law enforcement officer for the Northville police department and wanted to take a proactive response on campus regarding this issue.

"Here at the college, we take a proactive response to helping our students and this is one more thing we can use in our arsenal of safety," said Mayes.

Though incidents of needing an AED are rarely needed on campus, it is always good to have access in case someone has overdosed and is in need of life saving Narcan. Mayes speaks to this with the story of the recent incident of a PPL student that had a cardiac incident and was able to receive lifesaving care because of the AED being close by.

The Narcan and AEDs are available in almost every building on the Schoolcraft Campus. Schoolcraft noticed that other



Schoolcraft Police Lieutenant Matthew Mayes speaks about how the college is taking a proactive response to helping our students by having Narcan available on campus. Photo by Tala Wehbe.

higher education facilities were providing free Narcan and the college jumped on the opportunity, getting in touch with FAN [Families Against Narcotics].

"They graciously came out, and presented the program to us, putting it together very quickly," says Mayes.

This program was received well by most on campus. When people notice the distribution boxes, they speak in support of the free access to the lifesaving nasal spray.

Anyone is welcome to grab a box and bring it home or keep some in their office. The boxes are refilled by the police department when they notice that the distribution boxes are getting low. FAN states that they are not only for medical or police staff. They are also not just for incidents on campus, but it is encouraged for anyone who would like to have the Narcan, in case of an emergency.

See
'Be first to respond'
Page 7>

'Be first to respond'

cont'd from page 6>

When asked about if there was anything Mayes would like to say to students or anyone who is struggling with addiction, he commented “there is no judgment to take one of these proactively for a family member or friend and they take it off campus, that is their purpose. It is understood that students and staff have a life off campus; But if we can help someone who is related to the Schoolcraft family, then we are all for it. It's a non-judgment thing.”

Mayes hopes to see another program

done by FAN come to Schoolcraft soon called Hope not Cuffs. It is a program that helps those who do have a drug addiction can be referred to FAN's services and a counseling program; it is currently in the works.

As we witness Schoolcraft taking on a progressive outlook at those who are struggling, it leaves one with great anticipation to see what else is in store for the Schoolcraft family. For more information on Narcan go to www.Narcan.com/resources.



Narcan kit located next to the food pantry in the Vistatech basement. Photo by Pili Estevez.

LEARNING SUPPORT SERVICES

Success Starts Here



Alexia is the Service Desk lead. She takes care of the flow of people and keeps the office organized. She is the first and last face you see at the Learning Center.



Cayden is the STEM tutor lead. He primarily tutors math, accounting and Spanish.



Emily is the lead writing tutor. She covers writing classes, covering mostly all of the classes at Schoolcraft.

Do you have questions related to the Learning Center or looking for tips from our leads? Complete the QR and they will be answered in the future edition.



PILI ESTEVEZ
LAYOUT & DESIGN EDITOR

The Learning Center at Schoolcraft is a fantastic resource for students looking to improve their academic skills.

The Center, located at the Bradner Library, offers a variety of services such as tutoring, writing, language support and success coaching. All aimed at assisting students in excelling in their courses and enhancing their self-confidence.

One of the main services offered is **tutoring**. Subjects such as biology, chemistry, physics and math can be tricky for many students. The Learning Center's tutors are students knowledgeable in these areas who have taken the classes. They are always ready to help students work through tough problems, understand difficult concepts and prepare for exams.

Another great feature of the Learning Center is its **writing support**. Whether you're working on a research paper for a psychology class, a lab report for biology or

even a creative writing project, the tutors help refine ideas, organize thoughts and polish the final product.

Beyond academic tutoring, the Learning Center also offers **success coaching**. This service is designed to help students develop the skills needed to succeed in college and beyond. Success coaches work with students offering advice and strategies tailored to each student's unique situation whether it's tips on time management, setting goals, improving study habits or preparing for tests.

The Learning Center at Schoolcraft College is much more than a place to get help with homework. It's a supportive environment where students can build the skills and confidence they need to succeed. It's a valued resource and they are all about helping students reach their full potential, both in the classroom and beyond.

Connected by language

Linguistics club aims to break down the science of language

JESS MICHAEL
EDITOR-IN-CHIEF



Linguistic club members Nina, Izzy Varble and President Sam Varble figuring out puzzle on Langle. Photo by Jess Michael.

In February of 2024, Linguistics Club President, Sam Varble had the idea of forming a group after hearing many people speaking about language, they identified that many did not have the language to explain.

“I heard a ton of people talking about linguistics and not really having the language to convey what they were talking about,” said Varble.

Though they do not have a particular advisor for the group, they do have many professors who contribute their input such as Professor Warden, Professor Moore, and Dr. Suess.

A benefit to this club is you can attend virtually and in-person. Usually, they start the meeting with a game called Langle. Langle will give you a passage from a language, then you have to analyze it to discover where it comes from. Typically, guesses will give you a percentage of how close you are geographically to the location of the spoken language.

Varble worked with group members to make a discord that they use to pass on infor-

mation, but mostly funny language memes. A particularly funny meme, is the backstory of the Triscuit cracker. Typically, people would think this name means tri biscuit. But in fact, it means electricity biscuit. The reason it was given this name is because it was the first commercial bread, baked in an electric oven. This is just one of the many fascinating topics that Varble has covered in their club.

Varble currently works in the Learning Center and wants to teach. For right now, they are finishing their associates at Schoolcraft. This will allow them to substitute teach, while continuing on a higher education. They are passionate about anything pertaining to linguistics from Arabic, which is one of their favorite languages, to sign language.

Someone who had joined had asked for a specific topic about non-spoken languages. The group explored Plains Indian Sign Language (PISL). It was created not for people who have trouble hearing or as a way to have lingua franca [common language between Native

speakers] for multiple tribes. It helped connect tribes from all over the world. Varble is open to exploring any ideas people have.

Since the subject of linguistics is very vast, there are a plethora of avenues the group can explore.

“We do a lot of different activities in a new kind of area everyday, linguistics is so vast” said Varble.

Varble goes on to explain that sometimes learning about Linguistics can be done in unconventional ways. Members watched an episode of star trek and analyzed, it as they spoke only in metaphors. This particular episode is “Darmok” Season 5 episode 2.

Being a part of this club definitely helps others connect, plus it is fun and you can meet many different people. The Linguistics club will be connecting with Cultural Coffee Connections as often as possible. The Cultural Coffee Connection is run by the International Learning Support, ILS, to help support international students that attend class at Schoolcraft.

The best part about linguistics is that we are all connected in some way. It’s fascinating to learn how we are connected through language.

“Whenever we discover how two different languages connect, it brings up a new question; why are these connected?” said Varble.

Varble explains further that around forty two languages pronounce pineapple, ananas. Including Spanish, French, German and Arabic. Between all these different cultures and languages, they pronounce it mostly the same.

Varble encourages those who are interested in joining to please reach out through their discord; the QR code that connects to their discord is on their flyers located on billboards around campus. With any questions for Varble you can email the club, scclinguistics@gmail.com.

The club meets every Thursday for the fall semester, unless otherwise noted. The next club meeting will be Sept. 19, they will be covering jokes and wordplay. All are welcome.




2024 Michigan Renaissance Festival

Weekends (Sat. & Sun.)
 Aug. 17th – Sept. 29th • 9a – 7p
 Plus Labor Day, Sept. 2nd
 Festival Friday, Sept. 27th



MichRenFest.com


 248-634-5552

HUZZAH FOR NEW REVELRY!

- DRAGONS AWAIT!** • Explore the House of Dragons!
- CANDY FROM YORE!** • Try Freeze Dried Treats!
- MERMAID MAGIC!** • See the Barbi Mermaid!
- THRILLING RIDES!** • Crow's Nest & Barrell Ride!
- VIP PAMPERING!** • Upgrade Your Experience!

DISCOUNT TICKET OUTLETS



DISCOUNT COUPON OUTLETS



THANK YOU TO OUR SPONSORS



Illustration by Michelle Edgerton



CAMPUS & CLUB EVENTS

(All events are free and open to the public unless otherwise noted)

School Daze Fall Festival

September 16 and 17
10 a.m. - 2 p.m.
Trinity Elite Sports Center

Join us for Let's Play School Daze Fall Festival! Some of the attractions will include the following: Club Fair offered up by our student organizations, Campus Resources, Wellness Fair coordinated by the Hinkle Student Resource Center, Marketplace with local businesses and the Transfer College Section.

Fall Mela 2024

September 21
11 a.m. - 7 p.m.
Vistatech Center, DiPonio Room
FREE Admission

The Asian Student Association presents Fall Mela 2024. Bring friends and family and join us for a fun and immersive cultural experience! Pop in for a minute or stay the whole day! Clothing and Jewelry, Home Decor, Refreshments and Food, Face Painting and more! All are welcome.

Flag Football Under the Lights

September 22

7 p.m. - 10 p.m.
Outdoor Soccer Field

Join the Flag Football Club for some flag football games under the lights. All are welcome.

Blood Drive

September 24 & 25
10:30 a.m. - 3:30 p.m.
Lower Level, Vistatech Center

Stronger Together. Join us for the Fall 2024 Blood Drive. Walk-ins are welcome, as schedule allows. Appointments preferred. Call 866-642-5663 or visit versiti.org/mi. As a thank you, donors will get a \$10 E-Gift Card to a restaurant or shop of their choice.

Cider and Donuts

September 24
11 a.m. - 2 p.m.
Lower Level, Vistatech Center

Stop by and grab some cider and donuts provided by the Student Activities Board, while supplies last.

Earth and Geoscience Club Fall Semester General Meeting

September 24

4:30 p.m. - 5:30 p.m.
Forum Building • F360

Students interested in the Earth and Geoscience Club should join this meeting, which will cover introductions and, information on field trips.

Pageturners presents - Proof: A Play by David Auburn

Book Discussion

September 24
2:30 p.m. - 3:30 p.m.
BTC120

Join Pageturners for its September Book Discussion on Proof: A Play. One of the most acclaimed plays of its time, Proof is a work that explores the unknowability of love as much as it does the mysteries of science.

Caramel apple dipping

September 25
11 a.m. - 2 p.m.
Lower Level, Vistatech Center

Join us to create delicious caramel apple treats for you to take home!

Pageturners Movie Screening of Proof (2005)

September 26
2:30 p.m.
MC100 B&C

Join Pageturners for a movie screening of Proof. Proof is about the daughter of a brilliant but mentally disturbed mathematician, recently deceased, tries to come to grips with her possible inheritance: his insanity. Complicating matters are one of her father's ex-students, who wants to search through his papers., Hand her estranged sister, who shows up to help settle his affairs. Starring Gwyneth Paltrow, Anthony Hopkins, Jake Gyllenhaal and Hope Davis.

Rec Night

October 3
9 p.m. - 11:00 p.m.
Fitness Center, Physical Education Building

The Fitness Center is open late! Come by for a late-night workout, to play your favorite rec sports, enjoy snacks and refreshments, and more! Open to the community, so bring a friend, all are welcome.

ECG Fossil Hunt

October 5

10 a.m. - 12 p.m. in Sylvania, Ohio

Registration required by Sept. 24

The Earth and Geoscience Club is going on a fossil hunt in Northern, Ohio. Join us as we dig for fossils from the Devonian Period and let's travel 400 million years into the past! Those interested must register and attend the informational meeting on Sept. September 24 at 4:30 p.m. in Room F360 in the Forum Building.

The Civility Project with Nolan Finley and Stephen Henderson

October 7

11 a.m. - Noon

Kehrl Auditorium, Vistatech Center

Americans are best when they engage in civil conversations with people of opposing views, but today many feel they can't be friends with those whose politics are different. The Civility Project is changing that. Come join us to learn from these two thought leaders.

JOIN US FOR REC NIGHT



Pickleball
Volleyball
Basketball
Racquetball
Fitness Floor

Open to all. Bring your friends, it's FREE!

OCT. 3RD
9-11PM

ARE YOU A FITNESS CENTER MEMBER?

Schoolcraft Credit Students get a free Fitness Center membership. Sign up at the Front Desk today!



 **SCHOOLCRAFT COLLEGE**
RECREATION SERVICES
FITNESS CENTER

WE PUT THE COMMUNITY IN COLLEGE

ATTEND EVENTS



CHECK OUT THIS WEEK IN CAMPUS LIFE FOR UPCOMING CAMPUS EVENTS BY SCANNING THE QR CODE

JOIN A CLUB



LOOKING TO GET INVOLVED ON CAMPUS? JOIN A CLUB TODAY BY SCANNING THE OUR CODE

LEADERS GROW HERE. 

For more information, contact the Student Activities Office at 734-462-4422.



 Schoolcraft College

ARTS & ENTERTAINMENT



ELIZABETH LUX
MANAGING EDITOR

"Beetlejuice Beetlejuice"

Genre: Horror, Comedy

Released: September 6, 2024

Runtime: 1 hr 44 min

Streaming: In theaters

Rating: 6 / 10 stars



Stirring up mischief thirty-six years after the iconic film "Beetlejuice" rocked the industry, idiosyncratic Director Tim Burton's highly anticipated sequel "Beetlejuice Beetlejuice" arrives to take fans into the afterlife once again.

"Beetlejuice Beetlejuice" was released on September 6, 2024. It follows actress Wynona Rider reprising her role as Lydia Deetz, who is now an adult with a daughter, returning to her hometown for her father's funeral. The plot thickens when Deetz gets engaged at her father's memorial to a peculiar new man named Rory, who is played by actor Justin Theroux. However, things swiftly take a dark turn for her daughter Astrid, played by Jenna Ortega. Deetz is then forced to seek the help of esteemed actor Michael Keaton, returning as the iconic bio exorcist named Beetlejuice.

With actress Monica Bellucci as his ex-wife Delores on a lethal hunt to find him, the juice decides to help. Always at a price, of course.

While the film was marginally interesting, the plot felt rushed and quickly became predictable. It featured subplots that crowded each other, when they could have

The Juice is loose!

Iconic bio exorcist is revived on the big screen



been simplified to allow more embellishment of Beetlejuice and Delores. The film also vaguely explains what happened to the Maitland's from the first film, leaving viewers with unanswerable questions that many had hoped would be answered.

The acting of the cast overall was admirable.

Ortega really steals the spotlight, as she perfectly melted into the Deetz family. Similarly, her character provides great comedic relief through a decent supply of funny and sarcastic quips. Keaton did a respectable job at reprising his role, although his character seemed to be targeting a more adult audience with increased profanity and adult themes.

Dafoe provides some excellent come-

dic relief as the head of the afterlife police force. However, his overall character design was not portrayed well. He seemed like more of a filler character, sporting an unrealistic costume and a story that needed far more depth.

Bellucci, another notable actor, did a wonderful job portraying Delores. Her costume was beautiful, and her overall design was macabrely superb, but her story also lacked serious depth. Regrettably, the worst character design was Charles. His costume looked intentionally unreal, with a death that severely lacked originality.

Several scenes did not work, with some

See "The Juice is loose!"

page 13>

'The Juice is loose!'

cont'd from page 12>

unfortunately sporting below average special effects. Specifically, the animation of Charles' death being very poorly done. Similarly, the animation of the briefly returning sandworm was arguably worse than the first film. Just as inadequate was the engagement scene. It displayed a dramatic overhaul to Deetz personality through a cringeworthy scene, showing her to be more submissive and tempestuous than the previous film.

Woefully, the ending was equally unfavorable. Right when viewers thought the plot had closed, the final scene leaves them confused. It left room for a sequel, completely contradicting the previous scene.

On a more positive note, the cinematography was excellent. Returning fans and new viewers alike will enjoy the opening of the film, as the soaring camera angles glide through the fictional town of Winter River. The smooth cinematography also follows Astrid on her bike ride through town, resembling Deetz' comparable scene in the first film. The traditional elements of the afterlife waiting room, the Deetz family home and the bridge where the Maitland's had their accident in the first film were also impeccably captured.

This unique film features several themes, namely social media in modern popular culture. Burton pervades the plot with this concept, almost to the degree of vexing.

"Beetlejuice Beetlejuice" eloquently embraces a few additional nostalgic elements from the first film, notably the old village in

the attic where Beetlejuice lives which has been perfectly preserved as if no time had passed at all.

The Handbook for the Recently Deceased also makes its grand appearance, albeit in a way that grants an insightful prediction into the plot that diminishes its mystery.

Overall, this film did not live up to its expectations, earning a 6 out of 10. The story sounds great, but it could have been executed much better. It was mildly entertaining, needed more focus on Beetlejuice and Delores, better special effects and a more thoughtful ending.

See for yourself how the juice got loose but keep your expectations low and prepare to walk away speechless, one way or another at least. Check out "Beetlejuice Beetlejuice" at your local theaters, only if you dare...



Sara's Corner

Sometimes being more expressive than writing articles, Sara Mallory shares some of her transformative-themed poetry. You.



When I met you I was young
Younger than I am now
Now I have grown
And every similarity stings
Every difference too
We have grown
Grown apart
And I long for simpler days
Where "we" was a fact
Not just an excuse
You.
You were touched by the moon
Freed by the stars
I was burnt by the sun
Yet what mattered to me
mattered less to you
You.
Oh, God you.
I loved you.
I hated you.
But those feelings eclipsed "us"

Oh, God you.
I loved you.
I hated you.
But those feelings eclipsed "us"
And me?
I never was that important
But you?
Only you truly mattered to you
That realization still stings.

Heartbreak:
Heartbreak is heavy,
Heavy for those who wear
their hearts on their
sleeves
Pain is powerful
Powerful for those who
feel empathy
But in the end, we get a
little stronger
And everything goes on

Tuesdays 11-12 in L110 (the
International Learning Support
room in Bradner Library)

Linguistics Club!

September 3	Slang and Swear Words
September 12	Dying Languages Day: Revival
September 19	Jokes and Wordplay
September 26	How to Build a Crossword (Puzzle Day)
October 3	Conlangs
October 10	Etymology
October 17	Poetry and Music Day Part 2

Bring your questions, your ideas, and an open mind!



Check out our no-strings-attached Discord for language memes, club updates, and more!

QUESTIONS?
Contact us at
sclinguistics@gmail.com

Survival in the darkness

“Five Nights At Freddy’s: Into the Pit” is a frightening adventure that mixes suspense with chilling twists

NOAH MOORE
ARTS & ENTERTAINMENT EDITOR

“Five Nights At Freddy’s: Into the Pit”

Initial release date: August 7, 2024

Platforms: PlayStation 4, PlayStation 5, Xbox One and Series S|X & PC

Mode: Singleplayer, First Person, Side Scrolling Adventure

Genres: Horror adventure, Puzzle game, Survival Horror

Rating: 9.5 out of 10



Given the high-quality experiences that the Five Nights at Freddy’s series has consistently delivered, “FNAF: Into the Pit” challenges those elevated expectations. This latest series aims to uphold the franchise’s reputation for producing intense and immersive horror. This review seeks to help gamers understand how well “Into the Pit” stacks up against its predecessors, examining its narrative depth, gameplay mechanics, and overall scare factor.

Whether a long-time fan or new to the series, you will discover this latest video game that meets the high standards set by the FNAF legacy. The game takes place around the year of 1996. The player plays as a kid named Oswald, who wishes his town and life weren’t boring.

It all changes when he explores a ball pit at an old, run-down open pizzeria and finds himself in the past. However, not everything is what it seems when his deepest desire to find his father comes with an unexpected cost.

The game plays out in a 2D side-scrolling game, which allows the player to move laterally from left and right or vice versa depending on where the player wants to move. Oswald tries to escape and find his father, but he is being stalked and hunted by The Creature. If it catches the player, the game is over. You can try to



hide from the enemy by hiding in various spots including the vents, but you will have to deal with spiders crawling down the ceiling.

Cabinets are another way to hide, but Oswald must try to stay out of the line of sight of the enemy, as the enemy paces back and forth. While Oswald is running around trying to find his father, he must find items to help him open rooms. These rooms could have additional items that could help him find his father. In some rooms, the player may need to help kids trapped by The Creature.

Some items that the player could find while searching the rooms are a sticky hand which helps them to reach high places or arcade tokens which allows the player to get other items that can help them to create a distraction in another room allowing a clean getaway.

The enemy can create traps that are animatronics which will make the game harder

when the player comes in contact with one of the animatronics, when near one it will play a sound cue alerting the enemy, where the player is, giving them less time to try and hiding from the enemy even if the player thinks they are safe from the enemy.

The game tends to emphasize atmospheric tension and unsettling visuals over the intense, in-your-face scares in the main series. It still has its share of jump-scars and creepy moments, but it’s often considered to be less terrifying compared to the core games.

The overall scare factor is more about maintaining a sense of dread and unease rather than delivering constant shocks, getting a rating of 9.5 out of 10.

If one wants a brain teaser for an adventure all in one, then this game is well worth it.

“Criminal Minds” for the young adult

These cold cases just got a little warmer

SARA MALLORY
STAFF WRITER

The Naturals

Author: Jennifer Lynn Barnes

Genres: YA mystery, thriller, fiction

Originally published: Nov. 5th, 2013

Trigger warnings: Gun violence, general violence

RATING: 3.5/5 ★★☆☆☆

Ever heard of judging a book by its cover? This book has.

In the world of “The Naturals,” there are those who exist to be profiled and those who exist to profile. Behavior, personality and environment: three things critical to every profiler’s toolkit and something our titular hero Cassandra (Cassie) Hobbes knows too well.

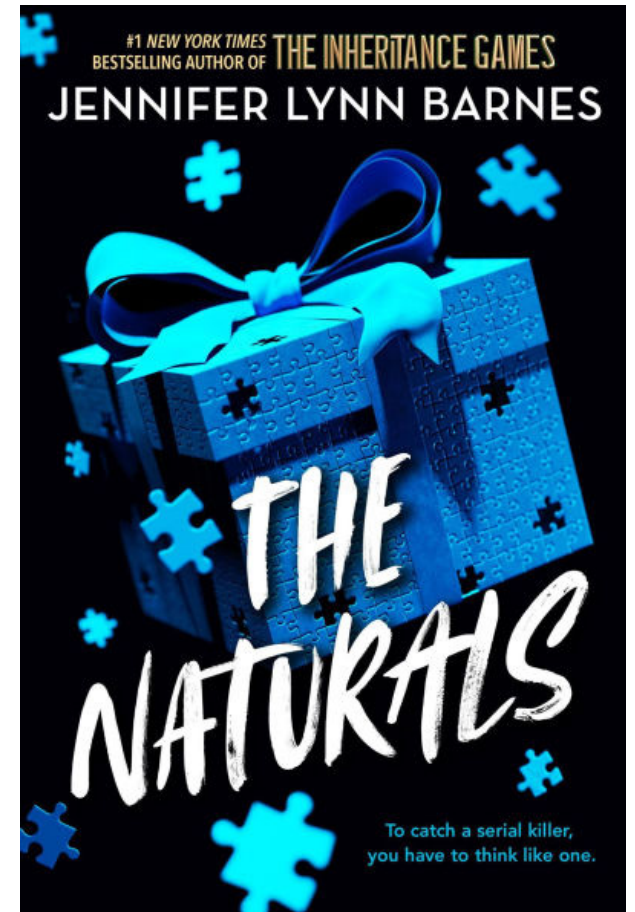
Cassie is only 17 when the FBI comes knocking on her door with a proposal: join her fellow Naturals or never find out more about her mother’s untimely demise. With good will and worse intentions, Cassie joins the secretive program and flies out to Vir-

ginia where she meets the rest of our cast: Dean, Lia, Micheal and Solone. Together, they encompass The Naturals program run by Agents Briggs and Locke.

The catch? The underage consultants are only allowed to work cold cases and are barred from touching active ones. But, in this field, danger looms around every corner. No matter how secure the FBI thinks they are, Cassie finds herself in a dangerous game of cat and mouse with a killer where both sides are playing to win.

“The Naturals” delves into the connection between the characters and the mystery at hand. Everything is intertwined; even the smallest of detail can make the biggest impact. Despite this, the novel was very predictable and borderline cliché. But, that does not mean the book cannot still be enjoyed.

The plot and one of the main hooks of the book involves a love triangle between Dean, Micheal and Cassie. This book mostly focuses on setting that plot point up rather than resolving it. Overall, the book is a short but fun and thrilling read that gets 3.5 out of 5 stars.



The story continues in “Killer Instinct,” as “The Naturals” remains the first book of the tetralogy.

Baked Spaghetti

Sometimes we need an easy meal and sometimes we need to use what we have. This recipe has ingredients that mostly come from the food pantry located in VistaTech basement, or can be purchased at the dollar store or have low cost options.

Ingredients:

One package of spaghetti (Cooked to al dente)
One can of tomato sauce
One can of diced tomatoes
Onion powder
Garlic powder
Worcestershire sauce
Butter
Shredded cheese of choice (I used sharp cheddar and shredded it myself)
Parmesan Cheese

Directions:

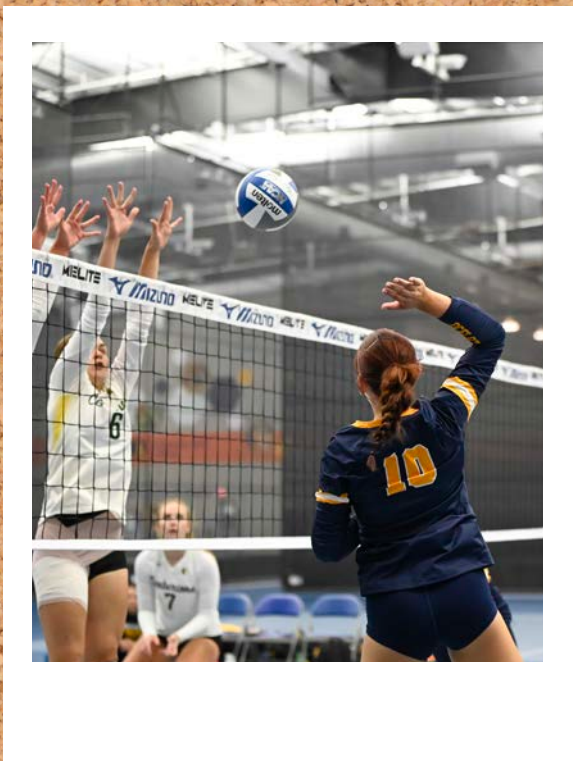
Cook the pasta
Combine both cans of sauce and diced tomatoes along with all the seasonings and butter.
Combine both spaghetti and sauce and mix together. Put half into a baking dish and spread both cheeses. Place the second half of the spaghetti on top of the cheese. Add the remaining cheese and broil for 5-10 minutes. Depending on your preference. Stay close to your dish while in the oven to prevent burning. Enjoy!



JESS MICHAEL
EDITOR-IN-CHIEF

Look for more recipes on the upcoming issues or
schoolcraftconnection.com.

SPORTS



GO
OCELOTS!

2024 SCHEDULE

WOMEN'S SOCCER TEAM

SEPTEMBER

Fri. 13 - Grand Rapids Community College | 1:00 PM EDT
Sun.15-Lakeland Community College | 2:00 PM EDT
Wed. 18- Schoolcraft College | 4:30PM EDT
Fri.20-#15Kellogg Community College | 2.30 PM EDT
Fri. 27 - Terra State Community College | 1:00 PM EDT

OCTOBER

Wed.2 - Schoolcraft College | 12:00PM EDT
Fri.4 - Owen's Community College | 1:00 PM EDT
Wed. 9- Lake Michigan College | 1:00PM EDT

MEN'S SOCCER TEAM

SEPTEMBER

Wed. 25 - Schoolcraft College | 4:00 PM EDT
Fri. 27 -Terra State Community College | 3:00 PM EDT

OCTOBER

Wed. 2 - Schoolcraft College | 2:00PM EDT
Fri. 4 - Owen's Community College | 3:00 PM EDT
Sun. 6- Triton College | 4:00PM EDT
Wed. 9- Lake Michigan College | 3:00PM EDT
Fri. 11- Lake Michigan College | 3:00PM EDT
Wed. 16- Schoolcraft College | 4:00PM EDT
Fri. 18- Schoolcraft College | 1:00PM EDT

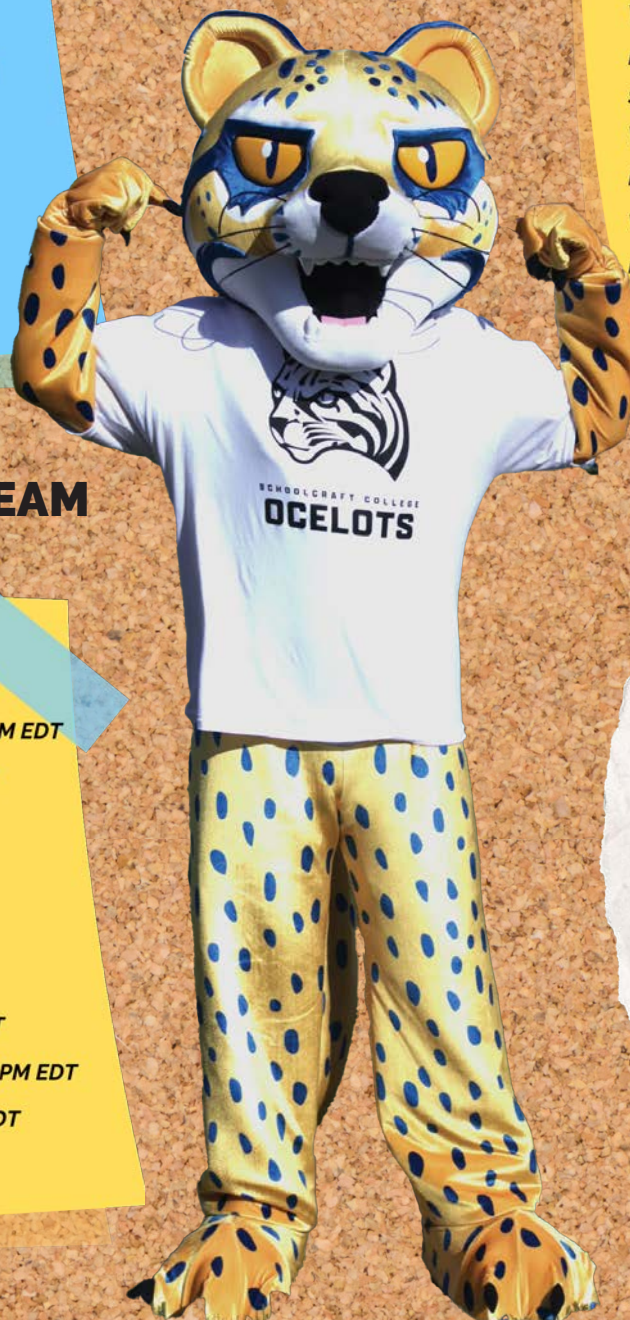
WOMEN'S VOLLEYBALL TEAM

SEPTEMBER

Mon. 16 - St. Clair County Community College | 7:00 PM EDT
Wed. 18 - Macomb Community College | 7:00 PM EDT
Mon. 23 - Mott Community College | 7:00PM EDT
Wed. 25 - Henry Ford College | 7:00 PM EDT

OCTOBER

Wed. 2- Jackson College | 7:00PM EDT
Mon. 7- Oakland Community College | 7:00PM EDT
Wed. 9- St. Clair County Community College | 7:00PM EDT
Wed. 14- Macomb Community College | 7:00PM EDT
Wed. 16- Mott Community College | 7:00PM EDT



**FOR MORE SPORTS SCHEDULES,
VISIT SCHOOLCRAFTOCELOTS.COM**

***TIMES AND LOCATIONS CAN BE CHANGE**

EDITORIAL

SCHOOLCRAFT CONNECTION

Editorial Staff

Jess Michael
Editor-in-Chief

Elizabeth Lux
Managing Editor

Noah Moore
Arts and Entertainment Editor

Pilar Estevez
Layout & Design Editor

Tala Wehbe
Multimedia Editor

Alexis Morris
Photo Editor

Izabella Allie
Content Manager

Staff

Sara Mallory
Tiffany Cabrera
Caitlin Cherry
Michelle Edgerton
Megan Edgerton
Luke Miller
Savanna Lee
Michelle Torres
Jolie Larsen
Nikki Wells
Amelia Curtis
Matt Wilder
Arnie Michael
Breanna Robertson
Alex Dyga
Shin Nakamura

Rena Laverty
Connection Adviser

Todd Stowell
Advertising Adviser

Social Media

Information

Instagram
@schoolcraftconnection

Facebook
@The Schoolcraft Connection

Twitter
@connectionsao

App
Search "Schoolcraft Connection on college news source"

THE COLLECTIVE PEN

Welcome back students



Photo by Alexis Morris

We all begin as new students, and we may not know all the ins and outs of college. Either you are freshly graduated from high school or have begun a new chapter in your life; whatever path you are currently on, the ins and outs of college are important know-hows.

The Editorial staff at the Connection wanted to express some points we wished we would have known when we were new students. The following is our advice to those first timers on how to be successful on their journey here.

The Learning Center

Something that is spoken about many times by our classmates or professors, is the Learning Center. Located in the Bradner Library, they have tutors that help with many subjects. Along with writing, math and many other subjects; they also

have different options for aid such as remote peer review and virtual drop-ins. This does not cost extra for any Schoolcraft student, this is covered under your tuition.

On-Campus Student Employment

On-campus jobs is another of the many advantages Schoolcraft has to offer. Many students are already so busy with their schedules, that an on-campus job could make life a little easier. To explore the available options for getting an on campus job you can contact studentemployment@schoolcraft.edu.



See 'The Collective Pen' page 19>

EDITORIAL POLICY:

Unsigned editorials represent the majority opinion of the Editorial Board. Signed columns solely reflect the opinion of the writer. The Schoolcraft Connection abstains from criticism of, or discrimination against any person on the basis of race, creed, color, sex, age, marital status, handicap, national origin, or sexual orientation.

The Schoolcraft Connection is a student forum and is self-monitored. We reject censorship and support a free student press. Material in The Schoolcraft Connection may not be reproduced in any form without prior written consent.

The Schoolcraft Connection corrects all errors of fact. If you have discovered an error, please contact the Editor in Chief, 734-462-4422, or sceditor@schoolcraft.edu.

Board of Trustees

Carol M. Strom
Chair

Brett M. Gierak
Vice Chair

Brian D. Broderick
Secretary

Terry Gilligan
Treasurer

Dillion E. Breen
Trustee

Angela Jaafar
Trustee

Candy R. Little
Trustee

Dr. Glenn R. Cerny, Ed.D.
President

Location Information

Schoolcraft College
18600 Haggerty Road
Livonia, Michigan, 48152-2696

Connection Editorial Offices

Student Activities Office
Lower level of Waterman
Campus center

'The Collective Pen'

cont'd from page 18>

Connect with your Professors

However, it's not always about the resources, sometimes it's about finding the right community to support you while you navigate college. Speaking to your professors after class, even if it is just for help. Many professors are very willing to speak to you, plus sometimes they can help you network for particular career paths you are interested in. This can also lead you to the many clubs and events that are available to help you find your community.

Get involved

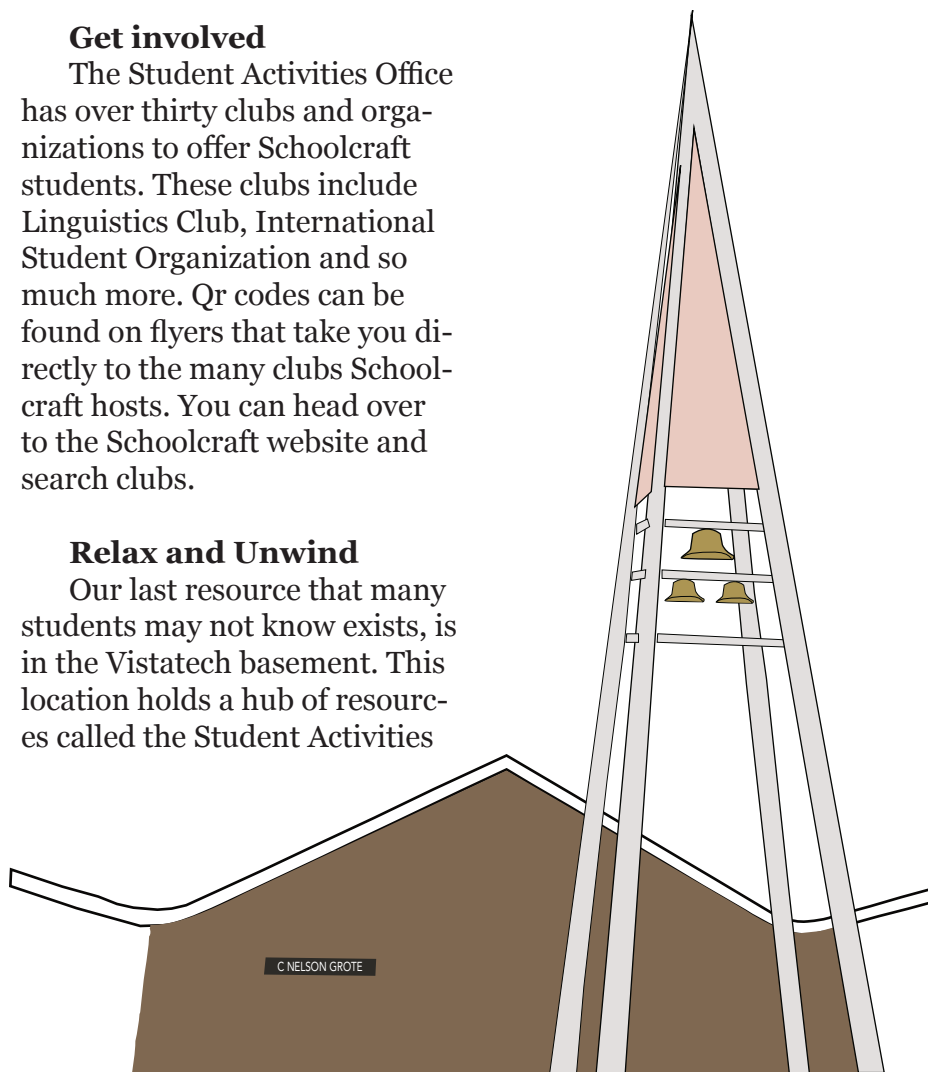
The Student Activities Office has over thirty clubs and organizations to offer Schoolcraft students. These clubs include Linguistics Club, International Student Organization and so much more. Qr codes can be found on flyers that take you directly to the many clubs Schoolcraft hosts. You can head over to the Schoolcraft website and search clubs.

Relax and Unwind

Our last resource that many students may not know exists, is in the Vistatech basement. This location holds a hub of resources called the Student Activities

Office. There, you can find access to the food pantry with no strings attached. In the basement there are many seating areas for students to study at, or classmates to sit with each other and hang out. On the other side is located the media, there are gaming consoles and a theater where you can watch movies. While watching a movie you can grab a free fresh bag of popcorn. Who doesn't love free popcorn!

The Connection editors hope this collection of our voices helps you navigate through the many happenings of Schoolcraft.




Schoolcraft College



SC BEWELL WRAPAROUND CARE

Promoting mental well-being for Schoolcraft College students



Scan QR code to register



Scan QR code for on campus support

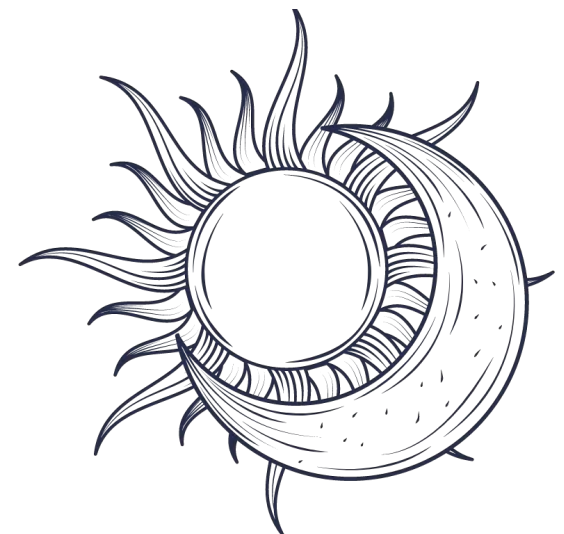
UWill - No cost, virtual counseling available 24/7/365 call 833-569-1434 or go to app.uwill.com/register to sign up.

Support On Campus - Limited sessions are available to all currently registered Schoolcraft students. Receive assistance in your mental health journey. Email studentrelations@schoolcraft.edu or call 734-462-4486 to schedule an appointment.

Mental Health Programming - multiple wellness-based programming and health trainings will be offered throughout the year

FEELING BORED?

Check out our Diversions on page 22 to brighten your day and cure your boredom!



OPINIONS



A Helping Hand

Empowering international students

PILI ESTEVEZ
LAYOUT & DESIGN EDITOR

Starting college is a big step for anyone, but for international students like myself, the challenges are even greater.

Adjusting to a new culture, language and academic system can be overwhelming. Fortunately, Schoolcraft College reopened a fantastic resource to help these students feel at home with the International Learning Support (ILS).

This program is designed to provide international students with the academic and cultural support they need to succeed, offering everything from English language tutoring to cultural events that bring the community together.

One of the biggest hurdles I faced was adjusting to studying in English. Beyond language and cultural support, ILS serves as a vital place for academic assistance. Whether it's receiving tutoring on how to approach assignments or learning how to execute effective research for papers, international students can rely on ILS to help them meet the demands of their coursework. The program's resources ensure that students can fully participate in their classes and achieve their academic goals, all covered by your tuition.

ILS was a lifeline for me when I first arrived in the States in 2021 and took my first class of ESL. Annika Galloway was ahead of the program before it closed by the beginning of 2022, and not only did she help me with my assignments and grammar, but also made me feel like I belonged. This year Sam Varble, president of the linguistics club and tutor at the Learning Center, took charge of the program and opened the doors again for students.

Another important aspect of the international student experience is adjusting to American culture, and the ILS steps in here, too.

The program hosts special events that are not only fun but also offer a way for students to learn more about U.S. customs in a friendly and inclusive environment. Also, it's a great way to bond over shared experiences while embracing new traditions.

This semester ILS will host Cultural Coffee Connections. Students, faculty, staff and community members are invited to join for coffee, tea and snacks while enjoying an educational presentation at the beginning of each event and an informal conversation with peers from various cultures around the world. This event will be held in Bradner Library Room 110 from 11 a.m. to 1 p.m. on Sept. 18, Oct. 7, Nov. 1 and Nov. 25.

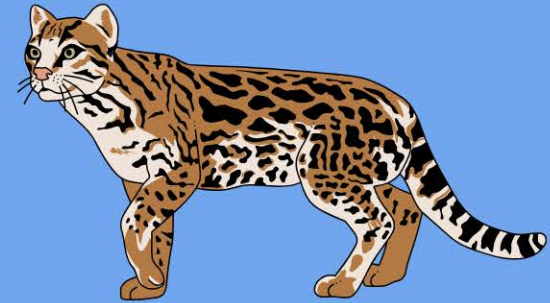
At its core, International Learning Support is about helping students adjust, learn and grow both academically and personally. For international students like me at Schoolcraft College, it's a lifeline that offers not just tutoring and workshops, but also a community.

This program creates a space where students can feel understood and supported as they navigate life in a new country.

Whether you're looking for help with your coursework, want to improve your English or just want to meet new people, the ILS is the place to go. It's a great way to get involved, build connections and make the most of your time at Schoolcraft College!

Ocelot Opinions

Why did you choose Schoolcraft?



INTERVIEW BY
TIFFANY CABRERA

Welcome back Ocelots! Thanks for checking in on this week's Ocelot Opinions. Our topic this week taps into different reasons to choose Schoolcraft. We asked students at the Ozzy-Palooza why they chose us. Let's jump right in!



CECIL
MAJOR: NURSING

"The nursing program! The tuition is really good, and the professors are awesome."



ZACK BRYANT
MAJOR: EARTH SCIENCE

"They have the Earth Science Program and it's something I want to be a part of."



NOAH WALTERS
MAJOR: GENERAL STUDIES

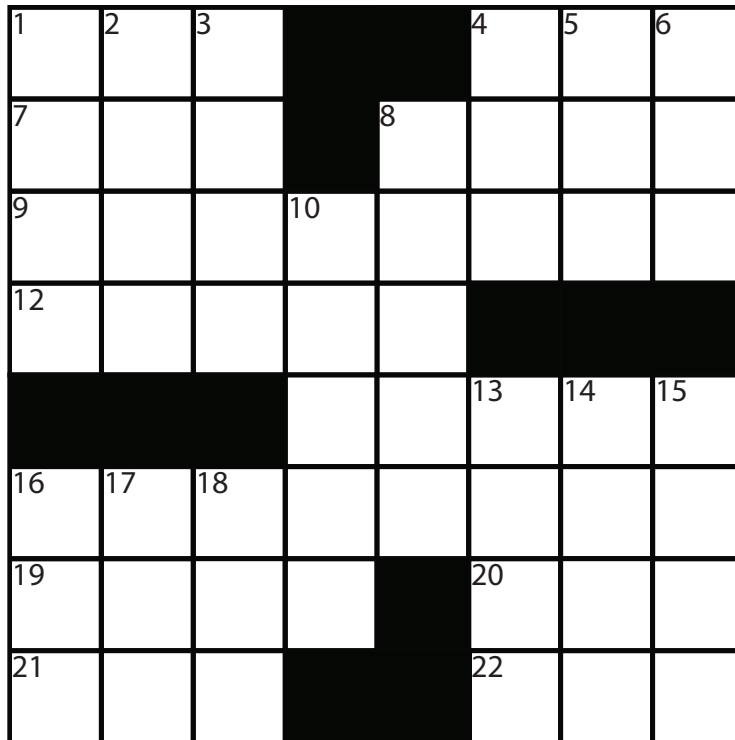
"It seemed like a really strong community. You can tell that everybody is friends and family here."



Check out our YouTube Channel
at The Schoolcraft Connection

DIVERSIONS

Find Answers on Page 23!



Across

- *1: Flavor enhancer
- 4: Pop star Grande, to fans
- 7: Acronym for U.S. eye doctor organization (note similarity to heart doctor equivalent)
- 8: Continent containing all of the world's 100 tallest mountains
- 9: Protagonists confidence
- 11: Instrument simulation software
- *12: Taste of 1 across by itself
- 16: Feeling the consequences of too much walking
- 19: Airplane table for most seats
- 20: Flowed, as five down might
- 21: Opposite of 'neath
- 22: What one might slide into

Down

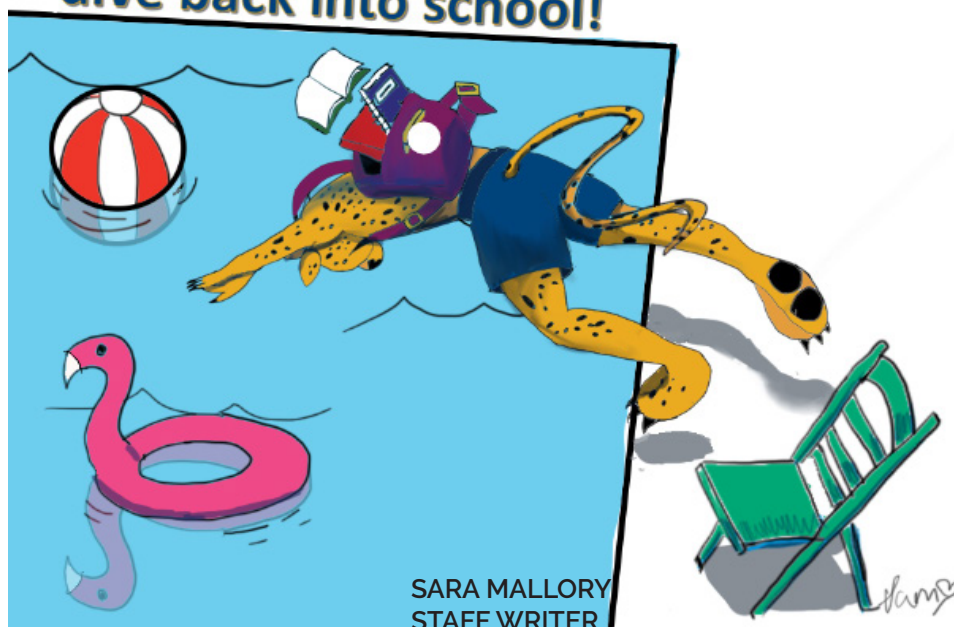
- 1: Mage + mage = ?
- *2: You can taste it with the sides of your tongue, toward the back
- 3: Untitled Goose _____
- 4: Spanish "so"
- 5: _____ de Janeiro, Brasilia's predecessor
- 6: Fleming who created 007
- 8: Cartography compendium
- *10: Savory turnover
- 13: Middleman in a freedom
- 14: Streetcar
- 15: Desires
- 16: DIY vacation days
- 17: Homophone for 18 down: foundry find
- 18: Homophone for 17 down: manual propulsion device



CROSSWORD ANSWER KEY
From Page 22

S	M	D ₂₂		R	E	O ₂₁
N	A	R ₂₀		Y	A	T ₁₉
E	R	O	S	T	O ₁₈	F ₁₆
Y ₁₅	T ₁₄	L ₁₃	A	S ₁₂		
			L	A	E	R ₁₁
N	O	I	T ₁₀	P	M	U ₉
A	I	S	A ₈		A	O ₇
I ₆	R ₅	A ₄			G ₃	S ₂
						M ₁

Welcome back students!
Time to get your cool on and
dive back into school!





AT THE JUNIOR YEAR OF
SCHOOLCRAFT COLLEGE'S

ALL AGES ANIME CONVENTION

December 7, 2024

10 a.m. to 11 p.m.

Schoolcraft College
Vistatech Center
18600 Haggerty Rd.
Livonia, MI 48152

Registration Badge Prices:

At the Door is \$10

Pre Registration online is \$7

and \$5 for Chibi (anyone 10 & Under)

(Presales will end at 11:59 p.m. on December 6, 2024)

Otaku U T-shirt Price: \$15 At Door

JOURNEY THROUGH THE COSMOS WITH SPACE PIRATES!

ATTRACTIONS INCLUDE:

- **Vendor Hall** - Proudly Sponsored By Super Capsule Project LLC-
- **A Tabletop Gaming Area** - Proudly Hosted By Our Event Sponsor: RIW Hobbies & Games
- **Cosplay Contest Inside the Vendor Hall** - Proudly Sponsored By Legendary Japanese Imports-
- **Asian Cuisine Demo Hosted By Mia Johnson**
- **Gaming Tournaments**
- **Anime AMV Viewings**
- **Manga Library**
- **VIP Voice Actor Guests:** Tyson Rinehart, Aaron Campbell, & Xanthe Huynh
- **Underground Dance Party** Featuring DJ Kuuma & DJ RETCON From Slashsound LLC
- **Guess That Anime Character Team Trivia Game**
- **New To This Year: The Ribbon Game**
- **Panels And More**



SCAN TO
PURCHASE
YOUR
TICKETS NOW!

<https://otakuu.org>

The meaning of Otaku to the Otaku Anime Club Leadership Team and their members is a passionate fan of anime, manga, comics, cartoons, video games, or K-Pop/J-Pop. U is taken from the word "university" because the convention is being held on a college campus. Otaku U is an event for people of all ages to be able to share their passions with other like minded individuals for a day! This will be our Junior Year, so you don't want to miss out on this out of this world experience!

If you are interested in purchasing Otaku U Badges, go to <https://otakuu.org/>. For additional questions, contact the Student Activities Office at 734-462-4422 or email sc.sao@apps.schoolcraft.edu.



Schoolcraft College